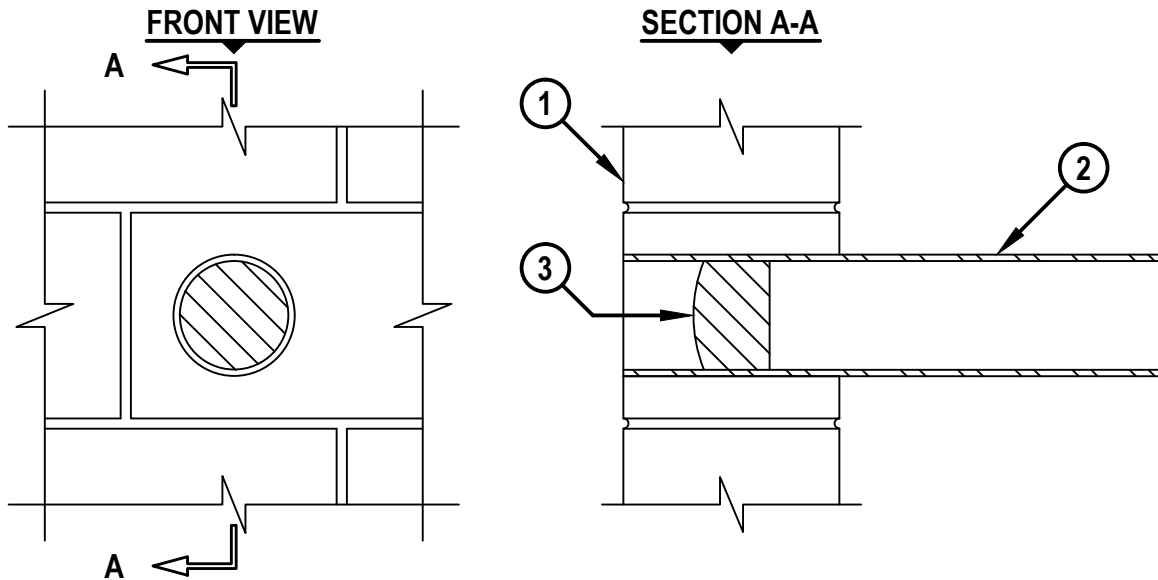


BLANK OPENING THROUGH CONCRETE WALL OR BLOCK WALL ASSEMBLY

F-RATING = 2-HR.

T-RATING = 0-HR. OR 1 3/4-HR.

WJ0010b.01112



1. CONCRETE WALL ASSEMBLY (2-HR. FIRE-RATING) :
 - A. LIGHTWEIGHT OR NORMAL WEIGHT CONCRETE WALL (MINIMUM 6" THICK).
 - B. ANY UL/cUL CLASSIFIED CONCRETE BLOCK WALL.
2. [OPTIONAL] MAXIMUM 4" NOMINAL DIAMETER STEEL PIPE SLEEVE (SCHEDULE 5 OR HEAVIER). SLEEVE CAST OR GROUTED INTO WALL AND MAY EXTEND UP TO 12" BEYOND WALL SURFACE IN ANY COMBINATION (SEE TABLE BELOW) (SEE NOTES NO. 2 AND 3 BELOW).
3. HILTI CFS-PL FIRESTOP PLUG OR HILTI CP 658T FIRESTOP PLUG INSTALLED TIGHTLY WITHIN SLEEVE AND CENTERED WITHIN WALL.

SLEEVE/OPENING DIAM IN. (MM)	NOM PLUG SIZE, IN. (MM)	
	CP 658T	CFS-PL
1-1/2 (38)	2.5 (63) *	2 (51) *
2 (51)	2.5 (63) *	2 (51)
3 (76)	4 (102) *	4 (102) *
4 (102)	4 (102)	4 (102)

* CUT WEDGE FROM PLUG TO FIT SLEEVE/OPENING SIZE. SEE HILTI INSTALLATION INSTRUCTIONS FOR SPECIFIC SIZE OF WEDGE CUTS REQUIRED.

NOTES : 1. NOMINAL DIAMETER OF OPENING = 1-1/2", 2", 3", OR 4".
 2. SLEEVE IS REQUIRED WHEN WALL IS CONSTRUCTED OF CONCRETE BLOCKS.
 3. SLEEVE TO BE RIGIDLY SUPPORTED WHEN EXTENDING MORE THAN 6" BEYOND WALL SURFACE.



HILTI, Inc.
 Tulsa, Oklahoma USA (800) 879-8000

Sheet	1 of 1
Scale	9/64" = 1"
Date	Jan. 11, 2012

Drawing No.
WJ
0010b