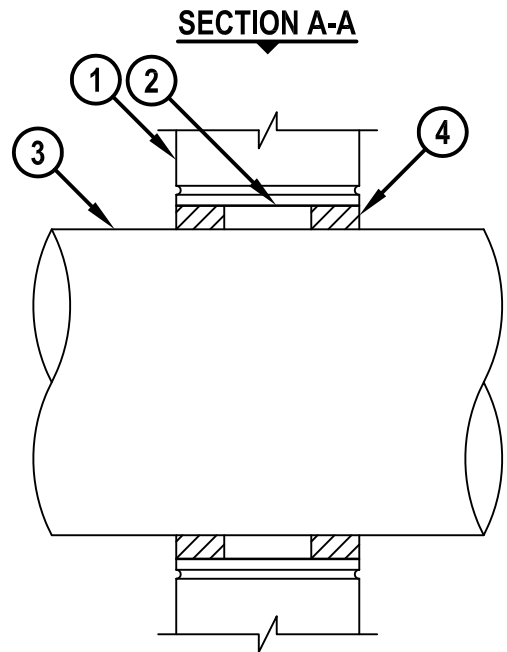
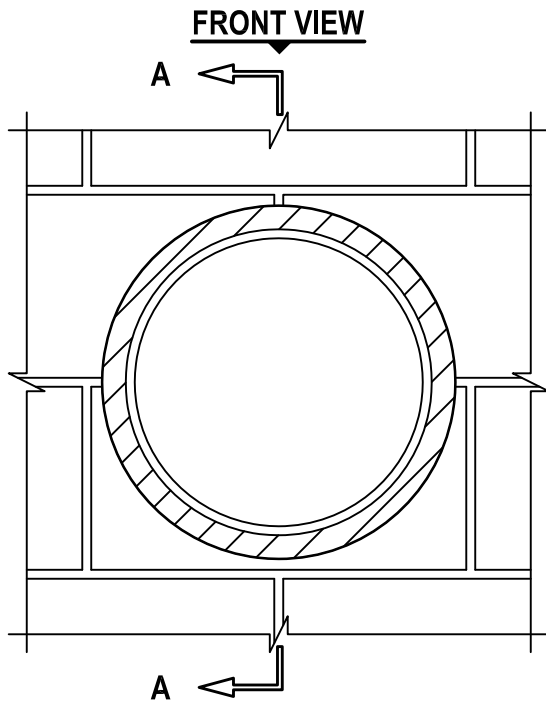


METAL PIPE THROUGH A SLEEVE IN A CONCRETE BLOCK WALL

F-RATING = 4-HR.

T-RATING = 0-HR.

WJ1041d.010815



1. ANY UL/cUL CLASSIFIED CONCRETE BLOCK WALL ASSEMBLY (MINIMUM 7-5/8" THICK) (4-HR. FIRE-RATING).
2. MAXIMUM 14" NOMINAL DIAMETER SHEET METAL SLEEVE (22 GAUGE THICKNESS).
3. PENETRATING ITEM TO BE ONE OF THE FOLLOWING :
 - A. MAXIMUM 12" NOMINAL DIAMETER STEEL PIPE (SCHEDULE 10 OR HEAVIER).
 - B. MAXIMUM 12" NOMINAL DIAMETER CAST IRON PIPE.
 - C. MAXIMUM 6" NOMINAL DIAMETER COPPER PIPE.
 - D. MAXIMUM 6" NOMINAL DIAMETER STEEL CONDUIT.
 - E. MAXIMUM 4" NOMINAL DIAMETER EMT.
4. MINIMUM 2" DEPTH HILTI FS-ONE MAX OR FS-ONE INTUMESCENT FIRESTOP SEALANT INSTALLED FLUSH WITH BOTH SURFACES OF WALL.

NOTES : 1. MAXIMUM DIAMETER OF OPENING = 14-5/8".
 2. ANNULAR SPACE = MINIMUM 7/8", MAXIMUM 1".



HILTI, Inc.
 Tulsa, Oklahoma USA (800) 879-8000

| | |
|-------|---------------|
| Sheet | 1 of 1 |
| Scale | 1/8" = 1" |
| Date | Jan. 08, 2015 |

Drawing No.
WJ
1041d