

UL/cUL SYSTEM NO. W-J-1095

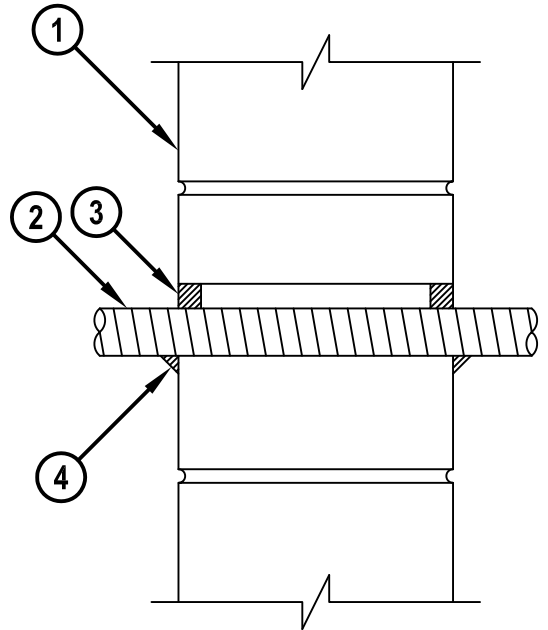
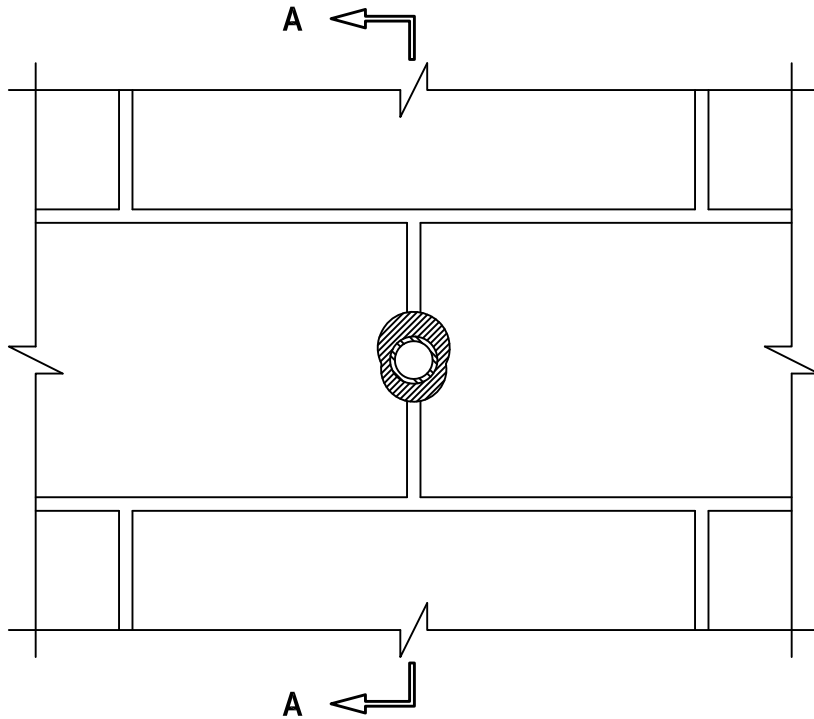
**FLEXIBLE STEEL CONDUIT THROUGH CONCRETE OR
CONCRETE BLOCK WALL ASSEMBLY**

F-RATING = 1-HR.
T-RATING = 0-HR.

WJ1095b.010815

FRONT VIEW

SECTION A-A



1. CONCRETE WALL ASSEMBLY (1-HR. FIRE-RATING) :
 - A. LIGHTWEIGHT OR NORMAL WEIGHT CONCRETE WALL (MINIMUM 3-3/4" THICK).
 - B. ANY UL/cUL CLASSIFIED CONCRETE BLOCK WALL.
2. MAXIMUM 1" NOMINAL DIAMETER FLEXIBLE STEEL CONDUIT.
3. MINIMUM 5/8" DEPTH HILTI FS-ONE MAX OR FS-ONE INTUMESCENT FIRESTOP SEALANT.
4. MINIMUM 1/2" BEAD HILTI FS-ONE MAX OR FS-ONE INTUMESCENT FIRESTOP SEALANT APPLIED AT POINT OF CONTACT.

NOTES : 1. MAXIMUM DIAMETER OF OPENING = 2".
2. ANNULAR SPACE = MINIMUM 0", MAXIMUM 3/4".



HILTI, Inc.
Tulsa, Oklahoma USA (800) 879-8000

Sheet	1 of 1
Scale	3/16" = 1"
Date	Jan. 08, 2015

Drawing No.
**WJ
1095b**

Saving Lives through Innovation and Education