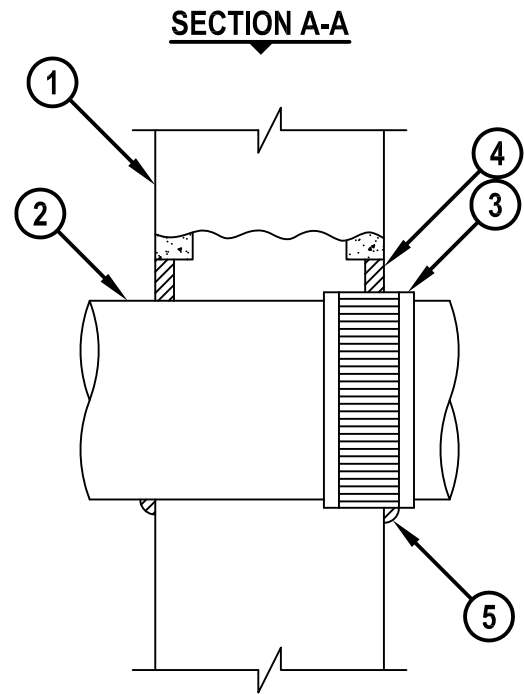
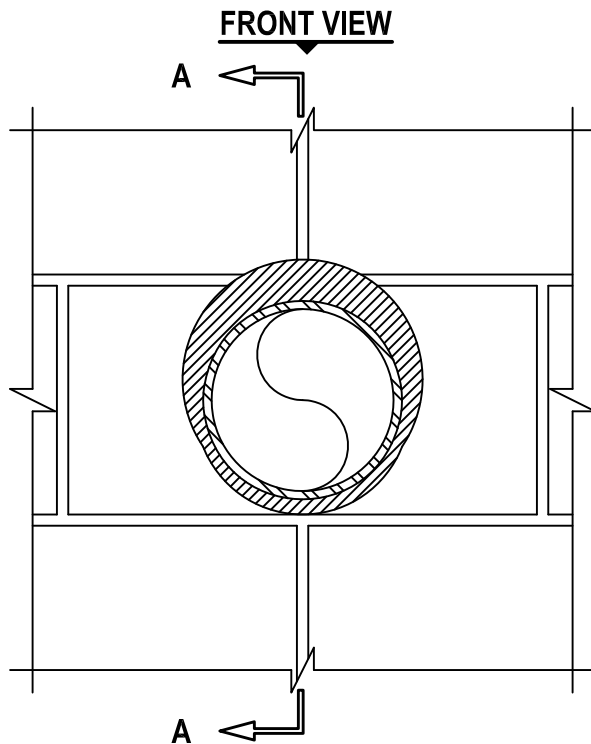


UL/cUL SYSTEM NO. W-J-1174

**CAST IRON OR DUCTILE IRON PIPE THROUGH CONCRETE WALL  
OR CONCRETE BLOCK WALL ASSEMBLY**

F-RATING = 2-HR.  
T-RATING = 1/4-HR.

WJ1174b.010815



1. CONCRETE WALL ASSEMBLY (2-HR. FIRE-RATING) :
  - A. LIGHTWEIGHT OR NORMAL WEIGHT CONCRETE WALL (MINIMUM 5" THICK).
  - B. ANY UL/cUL CLASSIFIED CONCRETE BLOCK WALL.
2. MAXIMUM 6" NOMINAL DIAMETER CAST IRON OR DUCTILE IRON PIPE.
3. CORRUGATED STAINLESS STEEL "NO-HUB" CONNECTOR INSTALLED ENTIRELY OR PARTIALLY WITHIN OPENING.
4. MINIMUM 5/8" DEPTH HILTI FS-ONE MAX OR FS-ONE INTUMESCENT FIRESTOP SEALANT.
5. MINIMUM 1/2" BEAD HILTI FS-ONE MAX OR FS-ONE INTUMESCENT FIRESTOP SEALANT APPLIED AT POINT OF CONTACT.

**NOTES : 1. MAXIMUM DIAMETER OF OPENING = 8".  
2. ANNULAR SPACE = MINIMUM 0", MAXIMUM 1".**



HILTI, Inc.  
Tulsa, Oklahoma USA (800) 879-8000

Sheet	1 of 1
Scale	5/32" = 1"
Date	Jan. 08, 2015

Drawing No.  
**WJ  
1174b**

*Saving Lives through Innovation and Education*