

METALLIC PIPE THROUGH CONCRETE WALL OR BLOCK WALL

F-RATING = 2-HR.

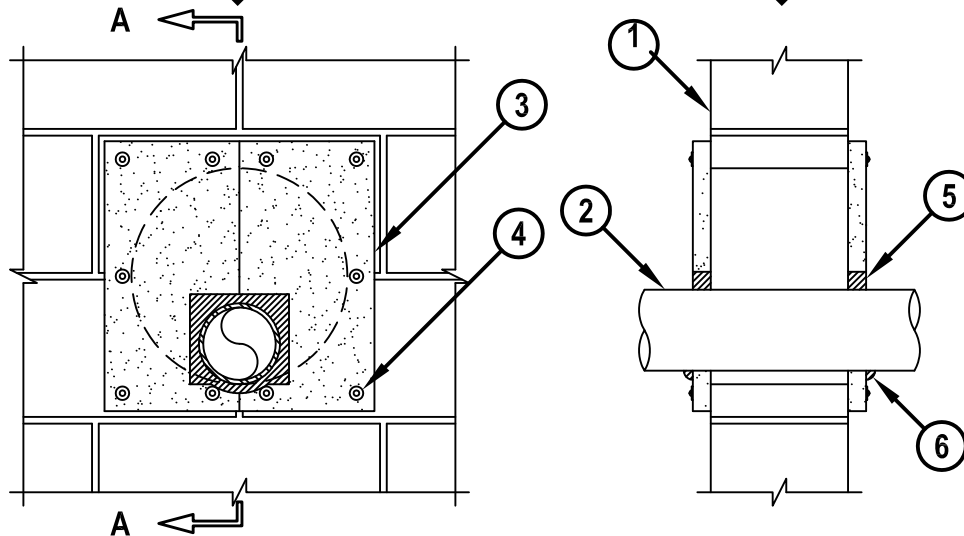
T-RATING = 1/4-HR.

L-RATING AT AMBIENT = LESS THAN 1 CFM / SQ FT

L-RATING AT 400°F = LESS THAN 1 CFM / SQ FT

FRONT VIEW

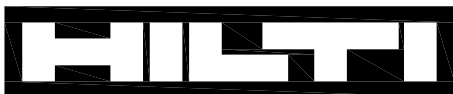
SECTION A-A



WJ1175c.010815

1. CONCRETE WALL ASSEMBLY (2-HR. FIRE-RATING) :
 - A. LIGHTWEIGHT OR NORMAL WEIGHT CONCRETE WALL (MINIMUM 6" THICK).
 - B. ANY UL/cUL CLASSIFIED CONCRETE BLOCK WALL.
2. PENETRATING ITEM TO BE ONE OF THE FOLLOWING :
 - A. MAXIMUM 8" NOMINAL DIAMETER STEEL PIPE (SCHEDULE 10 OR HEAVIER).
 - B. MAXIMUM 8" NOMINAL DIAMETER CAST IRON OR DUCTILE IRON PIPE.
 - C. MAXIMUM 4" NOMINAL DIAMETER COPPER PIPE OR TUBING.
 - D. MAXIMUM 6" NOMINAL DIAMETER STEEL CONDUIT.
 - E. MAXIMUM 4" NOMINAL DIAMETER EMT.
3. HILTI CP 675T FIRESTOP BOARD CUT TO OVERLAP OPENING, MINIMUM 1" ON ALL SIDES. POSITION TWO PIECES OF BOARD AROUND PENETRANT WITH CUT EDGES TIGHTLY BUTTED (SEE NOTE 3 & 4 BELOW).
4. FASTEN HILTI CP 675T FIRESTOP BOARD TO WALL WITH 3/16" x 2-1/4" LONG STEEL CONCRETE SCREW ANCHORS AND 1-1/4" DIAMETER WASHERS AT EACH CORNER OF EACH CUT BOARD AND MAXIMUM 6" O.C. AROUND PERIMETER OF FIRESTOP BOARD ON BOTH SIDES OF WALL.
5. MINIMUM 1" DEPTH HILTI FS-ONE MAX OR FS-ONE INTUMESCENT FIRESTOP SEALANT APPLIED IN ANNULAR SPACE BETWEEN PENETRANT AND FIRESTOP BOARD.
6. MINIMUM 1/2" BEAD HILTI FS-ONE MAX OR FS-ONE INTUMESCENT FIRESTOP SEALANT AT POINT OF CONTACT BETWEEN PENETRANT AND FIRESTOP BOARD.

NOTES : 1. MAXIMUM DIAMETER OF OPENING = 16-7/8".
 2. ANNULAR SPACE BETWEEN PENETRANTS AND OPENING = MINIMUM 0", MAXIMUM 7-7/8".
 3. CUT FIRESTOP BOARD TO RECTANGULAR SHAPE, TO WITHIN 1" OF PENETRANT.
 4. APPLY MINIMUM 1/2" BEAD HILTI FS-ONE MAX OR FS-ONE INTUMESCENT FIRESTOP SEALANT TO CUT EDGES OF BOARD PRIOR TO BUTTING PIECES TOGETHER AND FASTENING TO WALL.



Hilti Firestop Systems

HILTI, Inc.
 Tulsa, Oklahoma USA (800) 879-8000

Sheet	1 of 1
Scale	3/32" = 1"
Date	Jan. 08, 2015

Drawing No.

**WJ
1175c**