

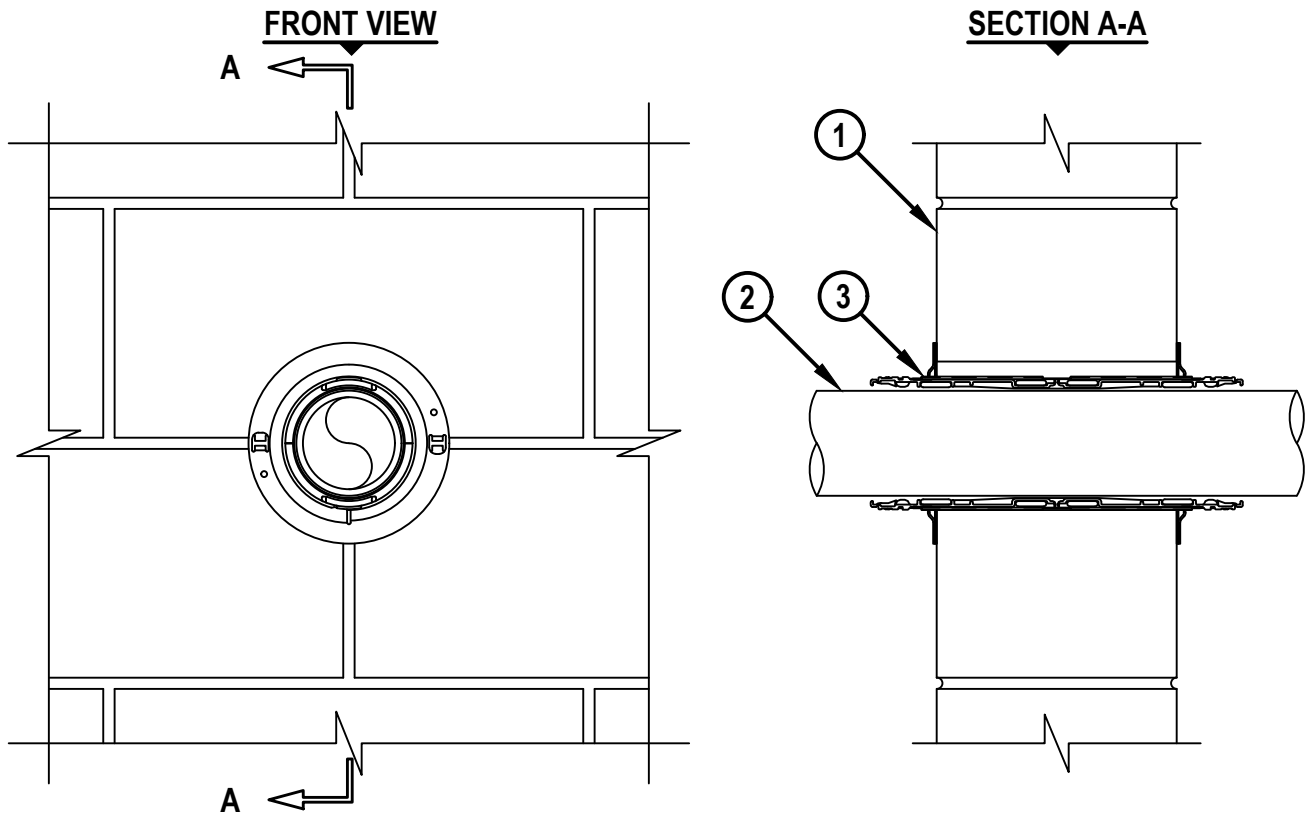
UL/cUL SYSTEM NO. W-J-1215

METAL PIPE THROUGH CONCRETE WALL OR BLOCK WALL ASSEMBLY

F-RATING = 2-HR.

T-RATING = 0-HR. OR 3/4-HR.

WJ1215g.072418



1. CONCRETE WALL ASSEMBLY (2-HR. FIRE-RATING) :
 - A. LIGHTWEIGHT OR NORMAL WEIGHT CONCRETE WALL (MINIMUM 5-5/8" THICK).
 - B. ANY UL/cUL CLASSIFIED CONCRETE BLOCK WALL.
2. PENETRATING ITEM TO BE ONE OF THE FOLLOWING :
 - A. MAXIMUM 3" NOMINAL DIAMETER STEEL PIPE (SCHEDULE 5 OR HEAVIER).
 - B. MAXIMUM 3" NOMINAL DIAMETER CAST OR DUCTILE IRON PIPE.
 - C. MAXIMUM 3" NOMINAL DIAMETER STEEL CONDUIT OR EMT.
3. HILTI CP 653 (BA) SPEED SLEEVE [2" OR 4"] OR HILTI CFS-SL GA L SPEED SLEEVE [4"] SLID INTO AND CENTERED WITHIN WALL. DEVICE FLANGES SPUN CLOCKWISE ONTO DEVICE THREADS OVER SMOKE GASKET, BUTTING TIGHTLY TO BOTH SIDES OF WALL.

NOTES : 1. MAXIMUM DIAMETER OF OPENING = 2-1/2" (FOR 2" DEVICE) OR 4-1/2" (FOR 4" DEVICE).
2. HILTI CFS-SL GA L SPEED SLEEVE SHALL ONLY BE USED IN WALLS 8" THICK OR GREATER.
3. ANNULAR SPACE BETWEEN DEVICE AND PERIPHERY OF OPENING = MINIMUM 0".
4. [OPTIONAL] AS AN ALTERNATE TO SMOKE GASKET, MINIMUM 1/2" DEPTH HILTI FS-ONE MAX INTUMESCENT FIRESTOP SEALANT OR HILTI CP 606 FLEXIBLE FIRESTOP SEALANT FLUSH WITH BOTH SURFACES OF WALL WITH AN ADDITIONAL 1/4" BEAD APPLIED AROUND PERIPHERY OF DEVICE PRIOR TO SECURING DEVICE FLANGES.

HILTI
Hilti Firestop Systems

HILTI, Inc.
Plano, Texas USA (800) 879-8000

| | |
|-------|---------------|
| Sheet | 1 of 1 |
| Scale | 5/32" = 1" |
| Date | July 24, 2018 |

Drawing No.

WJ
1215g

Saving Lives through Innovation and Education