

**METAL PIPE THROUGH CONCRETE WALL OR BLOCK WALL ASSEMBLY**

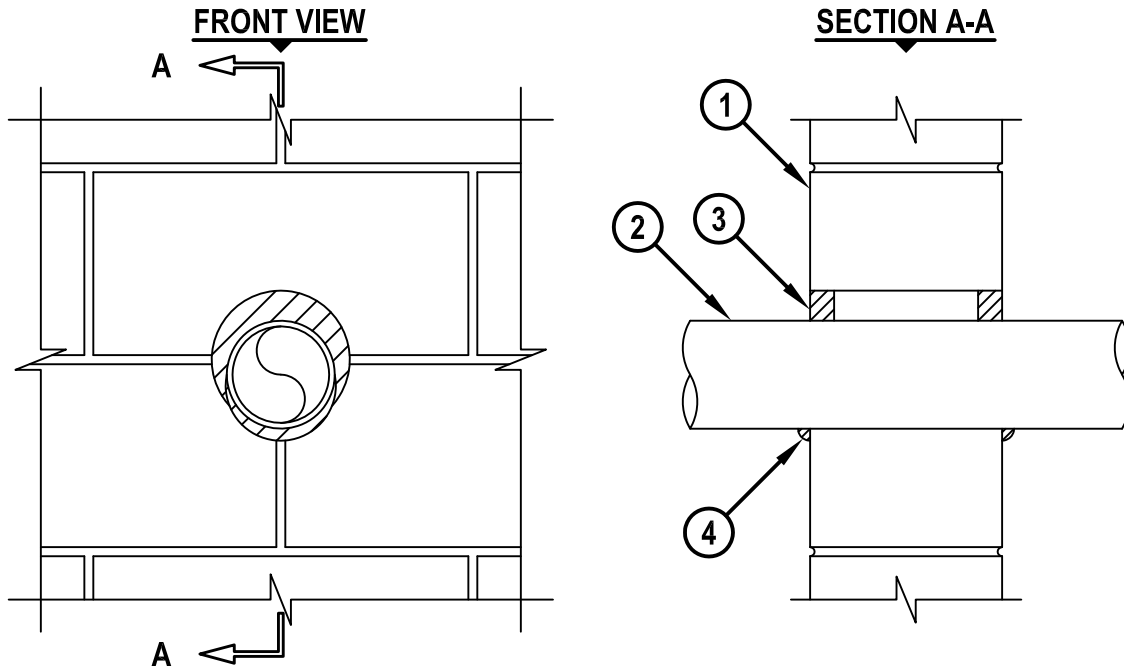
F-RATING = 1-HR., 2-HR., 3-HR., OR 4-HR.

T-RATING = 0-HR.

L-RATING AT AMBIENT = LESS THAN 1 CFM / SQ FT

L-RATING AT 400° F = 4 CFM / SQ FT

WJ1226b.010815



1. CONCRETE WALL ASSEMBLY (1-HR., 2-HR., 3-HR., OR 4-HR. FIRE-RATING) :
  - A. LIGHTWEIGHT OR NORMAL WEIGHT CONCRETE WALL (MINIMUM 6" THICK).
  - B. ANY UL/cUL CLASSIFIED CONCRETE BLOCK WALL.
2. PENETRATING ITEM TO BE ONE OF THE FOLLOWING :
  - A. MAXIMUM 4" NOMINAL DIAMETER STEEL PIPE (SCHEDULE 10 OR HEAVIER).
  - B. MAXIMUM 4" NOMINAL DIAMETER CAST IRON PIPE.
  - C. MAXIMUM 4" NOMINAL DIAMETER COPPER PIPE.
  - D. MAXIMUM 4" NOMINAL DIAMETER STEEL CONDUIT OR EMT.
3. HILTI FIRESTOP SEALANT APPLIED PER TABLE BELOW.
4. MINIMUM 1/2" HILTI BEAD OF FIRESTOP SEALANT APPLIED AT POINT OF CONTACT.

F, FH RATINGS HR.	SEALANT TYPE	SEALANT THICKNESS, IN.
1, 2	FS-ONE MAX OR FS-ONE OR CP 606	5/8
3	FS-ONE MAX OR FS-ONE OR CP 606	1
4	FS-ONE MAX OR FS-ONE	1

**NOTES : 1. MAXIMUM DIAMETER OF OPENING = 5-3/4".  
2. ANNULAR SPACE = MINIMUM 0", MAXIMUM 7/8".**



HILTI, Inc.  
Tulsa, Oklahoma USA (800) 879-8000

Sheet	1 of 1
Scale	1/8" = 1"
Date	Jan. 08, 2015

Drawing No.  
**WJ  
1226b**