

UL SYSTEM NO. W-J-2072

PLASTIC PIPE THROUGH CONCRETE WALL OR BLOCK WALL ASSEMBLY

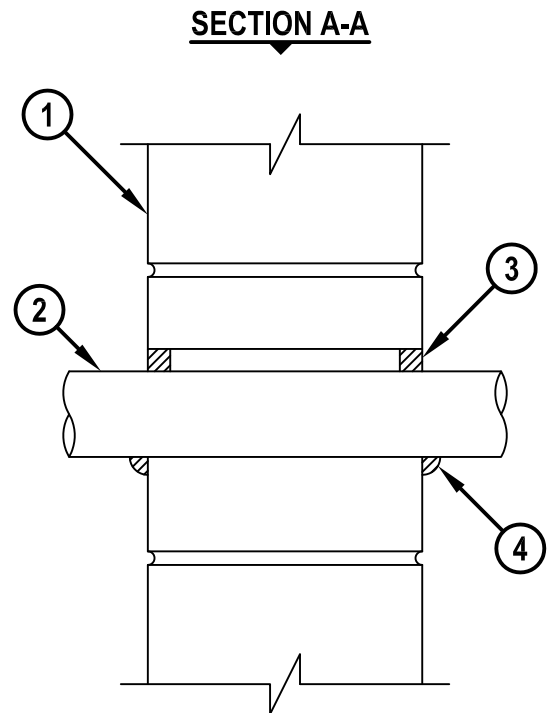
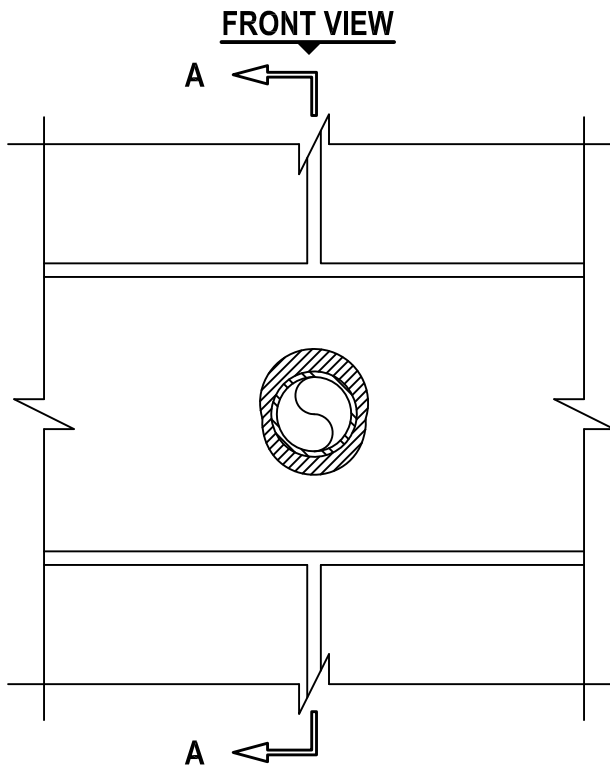
F-RATING = 2-HR.

T-RATING = 2-HR.

L-RATING AT AMBIENT = LESS THAN 1 CFM / SQ FT

L-RATING AT 400°F = 2 CFM / SQ FT

WJ2072f.010815



1. CONCRETE WALL ASSEMBLY (2-HR. FIRE-RATING) :
 - A. LIGHTWEIGHT OR NORMAL WEIGHT CONCRETE WALL (MINIMUM 5" THICK).
 - B. ANY UL CLASSIFIED CONCRETE BLOCK WALL.
2. PENETRATING ITEM TO BE ONE OF THE FOLLOWING :
 - A. MAXIMUM 2" NOMINAL DIAMETER PVC PLASTIC PIPE (SCHEDULE 40 OR HEAVIER) (CELLULAR OR SOLID CORE) (CLOSED OR VENTED PIPING SYSTEM).
 - B. MAXIMUM 2" NOMINAL DIAMETER CPVC PLASTIC PIPE (SDR 13.5) (CLOSED PIPING SYSTEM ONLY).
 - C. MAXIMUM 2" NOMINAL DIAMETER PEX TUBING (SDR 9) (CLOSED PIPING SYSTEM ONLY).
 - D. MAXIMUM 2" NOMINAL DIAMETER RNC-PVC CONDUIT (SCHEDULE 40).
3. MINIMUM 5/8" DEPTH HILTI FS-ONE MAX OR FS-ONE INTUMESCENT FIRESTOP SEALANT.
4. MINIMUM 1/2" BEAD HILTI FS-ONE MAX OR FS-ONE INTUMESCENT FIRESTOP SEALANT APPLIED AT POINT OF CONTACT.

NOTES : 1. MAXIMUM DIAMETER OF OPENING = 3".
2. ANNULAR SPACE = MINIMUM 0", MAXIMUM 5/8".



HILTI, Inc.
Tulsa, Oklahoma USA (800) 879-8000

| | |
|-------|---------------|
| Sheet | 1 of 1 |
| Scale | 3/16" = 1" |
| Date | Jan. 08, 2015 |

Drawing No.

WJ
2072f

Saving Lives through Innovation and Education