

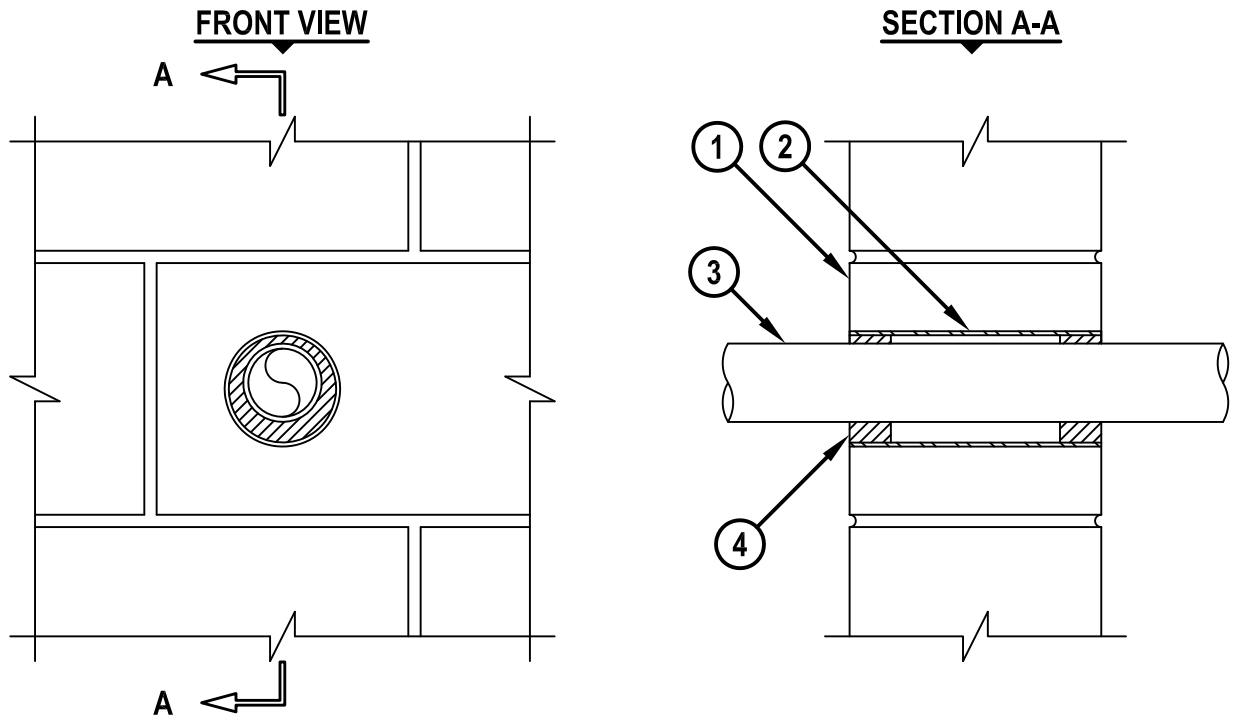
UL SYSTEM NO. W-J-2108

**PLASTIC PIPE THROUGH CONCRETE WALL OR BLOCK WALL ASSEMBLY**

F-RATING = 1-HR. OR 2-HR.

T-RATING = 0-HR.

WJ2108b.010815



1. CONCRETE WALL ASSEMBLY (1-HR. OR 2-HR. FIRE-RATING) (2-HR. SHOWN) :
  - A. LIGHTWEIGHT OR NORMAL WEIGHT CONCRETE WALL ASSEMBLY (MINIMUM 4-3/4" THICK).
  - B. ANY UL CLASSIFIED CONCRETE BLOCK WALL.
2. [OPTIONAL] MAXIMUM 3-1/2" NOMINAL DIAMETER SHEET METAL SLEEVE (MIN. 28. GA) WITH MINIMUM 1-1/4" LAP ALONG LONGITUDINAL SEAM.
3. PENETRATING ITEM TO BE ONE OF THE FOLLOWING (ALSO SEE NOTE NO. 3 BELOW) :
  - A. MAXIMUM 2" NOMINAL DIAMETER PVC PLASTIC PIPE (CELLULAR OR SOLID CORE).
  - B. MAXIMUM 2" NOMINAL DIAMETER CPVC PLASTIC PIPE (CLOSED PIPING SYSTEM ONLY).
4. HILTI FS-ONE MAX OR FS-ONE INTUMESCENT FIRESTOP SEALANT :
  - A. MINIMUM 5/8" DEPTH OF SEALANT FOR A 1-HR. FIRE-RATING.
  - B. MINIMUM 1-1/4" DEPTH OF SEALANT FOR A 2-HR. FIRE-RATING.

**NOTES :** 1. MAXIMUM DIAMETER OF OPENING = 3-1/2".  
2. ANNULAR SPACE = MINIMUM 1/4", MAXIMUM 11/16".  
3. CLOSED OR VENTED PIPING SYSTEMS (PVC = SCHEDULE 40; CPVC = SDR 13.5).



HILTI, Inc.  
Tulsa, Oklahoma USA (800) 879-8000

Sheet	1 of 1
Scale	11/64" = 1"
Date	Jan. 08, 2015

Drawing No.

**WJ  
2108b**

*Saving Lives through Innovation and Education*