

UL SYSTEM NO. W-J-2207

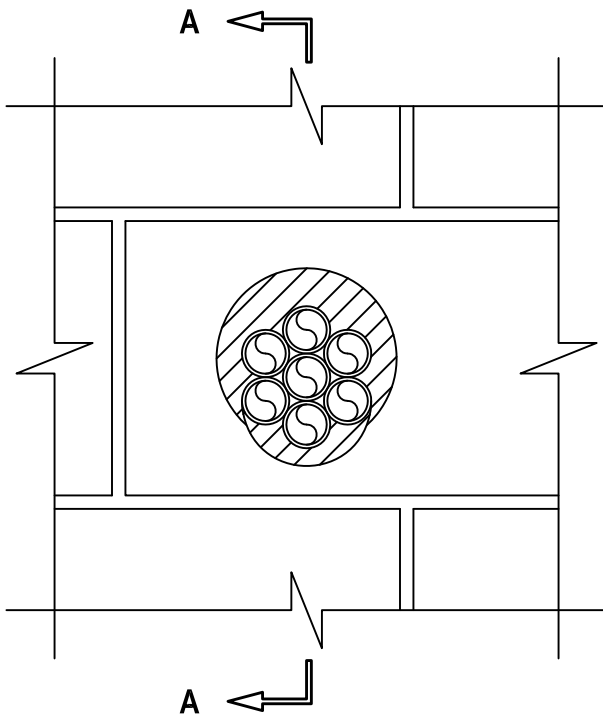
MULTIPLE PLASTIC PIPE THROUGH CONCRETE OR BLOCK WALL ASSEMBLY

F-RATING = 2-HR.

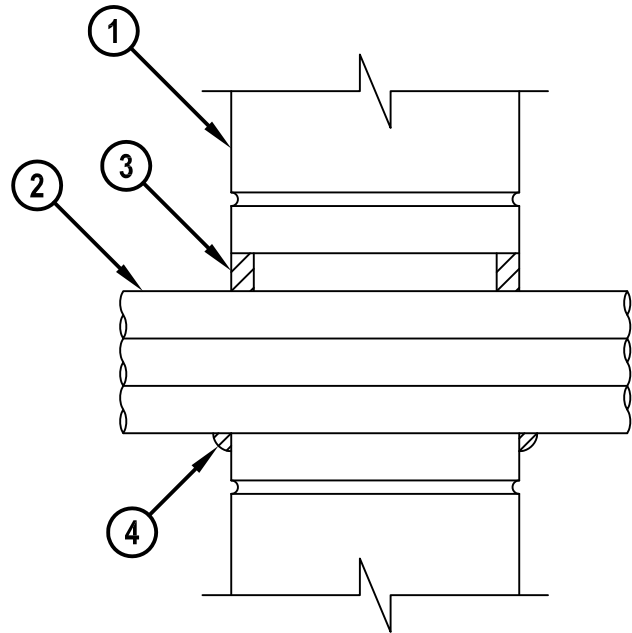
T-RATING = 1-HR.

WJ2207b.010915

FRONT VIEW



SECTION A-A



1. CONCRETE WALL ASSEMBLY (2-HR. FIRE-RATING) :

A. LIGHTWEIGHT OR NORMAL WEIGHT CONCRETE WALL (MINIMUM 6" THICK).

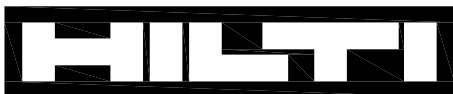
B. ANY UL CLASSIFIED CONCRETE BLOCK WALL.

2. MAXIMUM 4" DIAMETER BUNDLE OF TUBES CONSISTING OF MAXIMUM 1" NOMINAL DIAMETER CROSS-LINKED POLYETHYLENE (PEX) TUBING (SDR 9) (CLOSED PIPING SYSTEM).

3. MINIMUM 5/8" DEPTH HILTI FS-ONE MAX OR FS-ONE INTUMESCENT FIRESTOP SEALANT.

4. MINIMUM 1/2" BEAD HILTI FS-ONE MAX OR FS-ONE INTUMESCENT FIRESTOP SEALANT APPLIED AT POINT OF CONTACT.

**NOTES : 1. MAXIMUM DIAMETER OF OPENING = 5".
2. ANNULAR SPACE = MINIMUM 0", MAXIMUM 1".**



Hilti Firestop Systems

HILTI, Inc.
Tulsa, Oklahoma USA (800) 879-8000

Sheet	1 of 1
Scale	3/16" = 1"
Date	Jan. 09, 2015

Drawing No.

**WJ
2207b**

Saving Lives through Innovation and Education