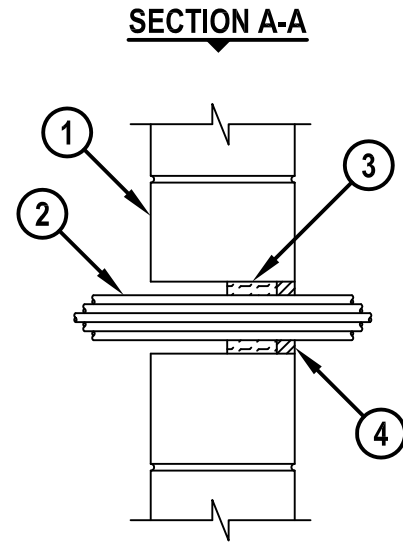
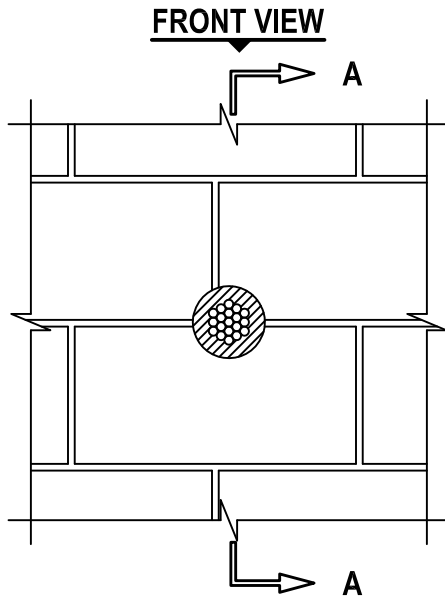


**CABLE BUNDLE THROUGH CONCRETE OR CONCRETE  
BLOCK SHAFT WALL ASSEMBLY**

F-RATING = 1-HR. OR 2-HR.  
T-RATING = 0-HR.

WJ3061c.010915



1. CONCRETE WALL ASSEMBLY (1-HR. OR 2-HR. FIRE-RATING) (2-HR. SHOWN) :
  - A. LIGHTWEIGHT OR NORMAL WEIGHT CONCRETE WALL (MINIMUM 3-3/4" THICK).
  - B. ANY UL/cUL CLASSIFIED CONCRETE BLOCK WALL.
2. CABLE BUNDLE TO CONSIST OF ANY OF THE FOLLOWING :
  - A. MAXIMUM 7/C NO. 12 AWG CABLE.
  - B. MAXIMUM 25 PAIR NO. 24 AWG TELEPHONE CABLE.
  - C. RG 59 COAXIAL CABLE.
  - D. MAXIMUM 3/C NO. 12 AWG METAL CLAD CABLE.
  - E. MAXIMUM 5/8" DIAMETER FIBER-OPTIC CABLE.
3. MINIMUM 2-1/8" OR 2-3/4" THICKNESS MINERAL WOOL (MIN. 4 PCF DENSITY) TIGHTLY PACKED AND RECESSED ON ONE SIDE OF THE WALL, FOR 1-HR. OR 2-HR. FIRE-RATED WALLS, RESPECTIVELY.
4. MINIMUM 1" DEPTH HILTI FS-ONE MAX OR FS-ONE INTUMESCENT FIRESTOP SEALANT.

**NOTES :** 1. MAXIMUM DIAMETER OF OPENING = 4".  
 2. CABLES TO FILL A MAXIMUM 33% OF CROSS-SECTIONAL AREA OF OPENING.  
 3. ANNULAR SPACE = MINIMUM 1/4", MAXIMUM 3/4".  
 4. THIS FIRESTOP SYSTEM WAS DESIGNED AND TESTED FOR APPLICATIONS IN WHICH THERE IS LIMITED OR NO ACCESS AVAILABLE ON ONE SIDE OF THE WALL.



HILTI, Inc.  
Tulsa, Oklahoma USA (800) 879-8000

Sheet	1 of 1
Scale	3/32" = 1"
Date	Jan. 09, 2015

Drawing No.

**WJ  
3061c**