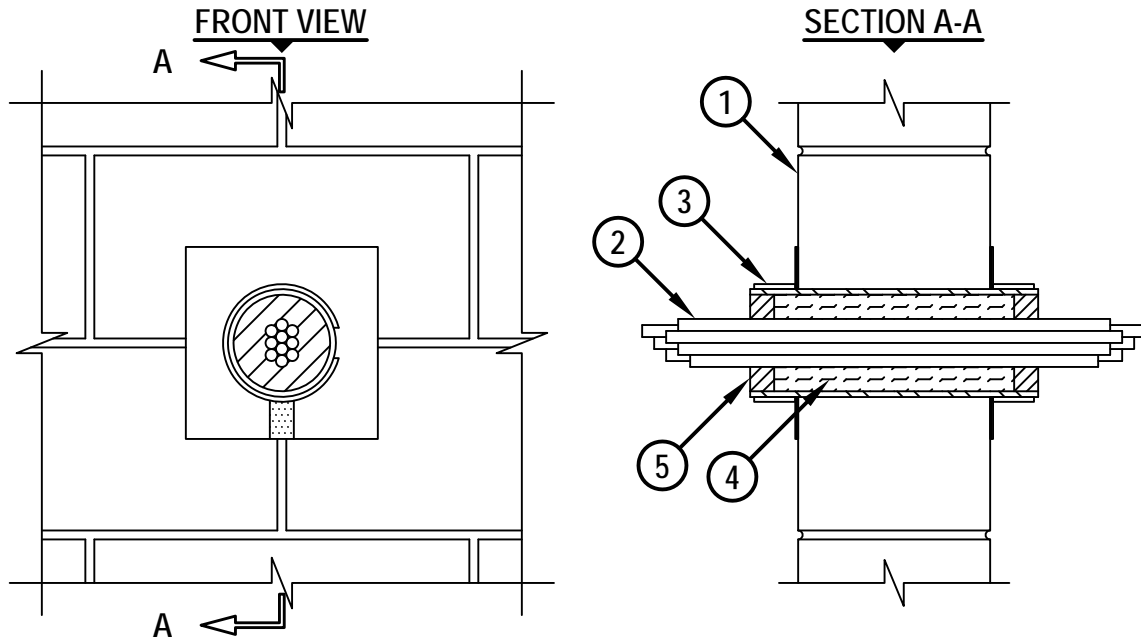


**CABLE BUNDLE THROUGH "UNIQUE FIRE STOP SLEEVE" IN CONCRETE WALL OR
BLOCK WALL**

F-RATING = 4-HR.
T-RATING = 0-HR.

WJ3112a.031612



1. CONCRETE WALL ASSEMBLY (4-HR. FIRE-RATING) :
 - A. LIGHTWEIGHT OR NORMAL WEIGHT CONCRETE WALL (MINIMUM 7-5/8" THICK).
 - B. ANY UL/cUL CLASSIFIED CONCRETE BLOCK WALL (MINIMUM 8" THICK).
2. CABLE BUNDLE TO CONSIST OF ANY OF THE FOLLOWING :
 - A. MAXIMUM RG59/U COAXIAL CABLE WITH PVC JACKET.
 - B. MAXIMUM 62.5/48 FIBER-OPTIC CABLE WITH PVC JACKET.
 - C. MAXIMUM 4 PAIR NO. 24 AWG COPPER CONDUCTOR DATA CABLE WITH PVC JACKET.
3. SPLIT SLEEVE OR THREADED SLEEVE (1", 2" AND 4" SIZES) MANUFACTURED BY UNIQUE FIRE STOP PRODUCTS, INC. AND INSTALLED PER ACCOMPANYING INSTALLATION INSTRUCTIONS.
4. MINERAL WOOL (MIN. 4 PCF DENSITY) TIGHTLY PACKED WITHIN THE SLEEVE AND RECESSED FROM EACH END OF DEVICE TO ACCOMMODATE FIRESTOP PUTTY.
5. MINIMUM 1" DEPTH HILTI CP 618 FIRESTOP PUTTY STICK.

NOTES : 1. MAXIMUM DIAMETER OF OPENING FOR 1", 2", AND 4" SLEEVES ARE 1-1/4", 2-7/16", AND 4-1/2" RESPECTIVELY.
 2. ANNULAR SPACE BETWEEN CABLE BUNDLE AND PERIPHERY OF OPENING = MINIMUM 1/4", MAXIMUM 1-1/4".
 3. CABLES TO FILL MINIMUM 8% TO MAXIMUM 48% OF CROSS-SECTIONAL AREA OF SLEEVE.



HILTI, Inc.
Tulsa, Oklahoma USA (800) 879-8000

Sheet	1 of 1
Scale	1/8" = 1"
Date	Mar. 16, 2012

Drawing No.
**WJ
3112a**