

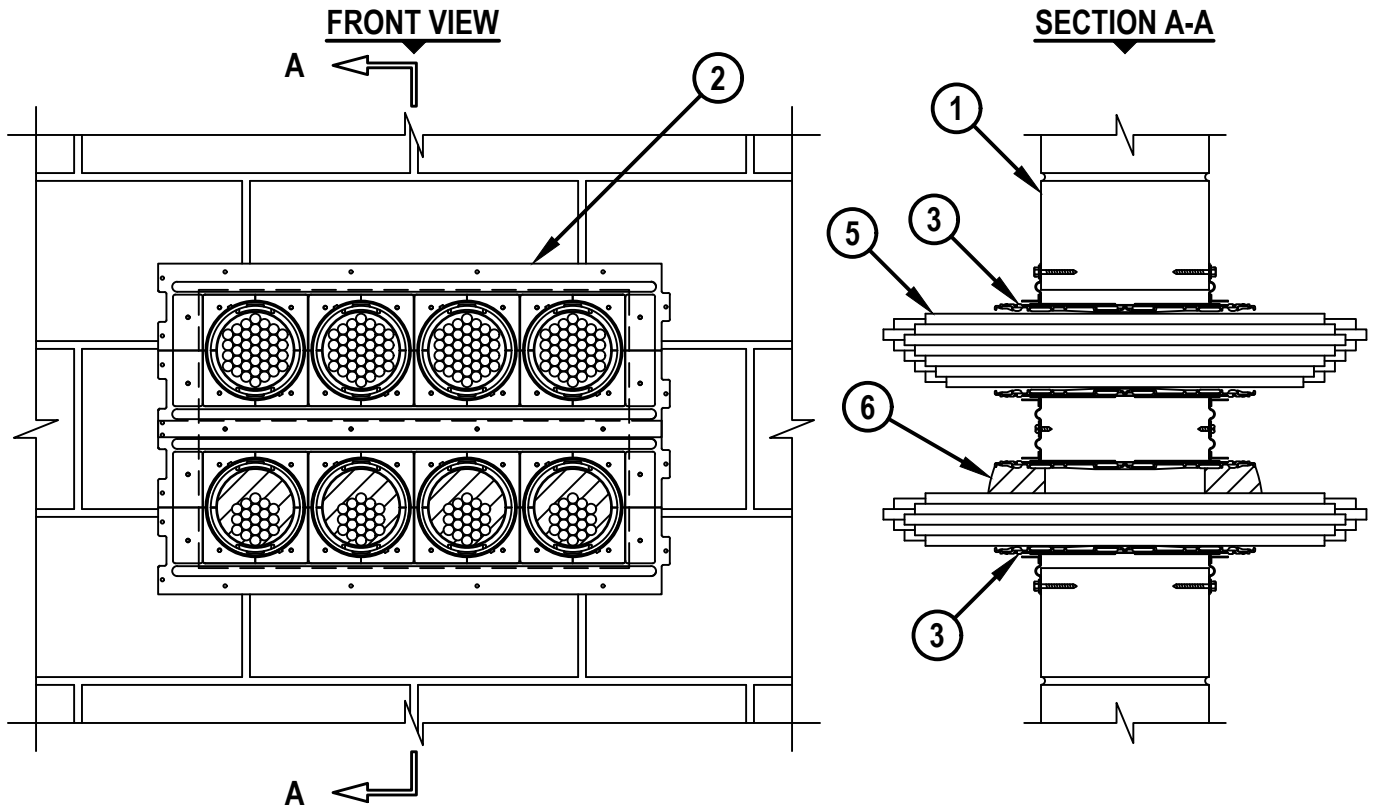
UL/cUL SYSTEM NO. W-J-3200

MULTIPLE CABLE BUNDLES THROUGH CONCRETE OR BLOCK WALL ASSEMBLY

F-RATING = 2-HR.

T-RATING = 1/4-HR.

L-RATING = SEE TABLE BELOW



WJ3200c.062717

1. CONCRETE WALL ASSEMBLY (2-HR. FIRE-RATING) :
 - A. LIGHTWEIGHT OR NORMAL WEIGHT CONCRETE WALL (MINIMUM 6" THICK).
 - B. ANY UL/cUL CLASSIFIED CONCRETE BLOCK WALL.
2. HILTI CFS-SL GP FIRESTOP GANGPLATE (16" OR 24") ORIENTED VERTICALLY OR HORIZONTALLY AND SECURED TO THE FACE OF THE WALL WITH MINIMUM 1-1/2" LONG MASONRY SCREWS OR ANCHORS THROUGH PREPUNCHED HOLES AROUND PERIPHERY OF PLATE. FOR DOUBLE PLATE INSTALLATIONS, FOUR MINIMUM NO. 10 x 3/4" STEEL SCREWS ARE USED TO SECURE THE PLATE TO PLATE JOINT THROUGH PREPUNCHED HOLES IN THE PLATE (SEE MAXIMUM SIZE OF OPENING TABLE FOR INSTALLATION OPTIONS).



HILTI, Inc.
Plano, Texas USA (800) 879-8000

Sheet	1 of 3
Scale	3/32" = 1"
Date	June 27, 2017

Drawing No.
**WJ
3200c**

Saving Lives through Innovation and Education

MULTIPLE CABLE BUNDLES THROUGH CONCRETE OR BLOCK WALL ASSEMBLY

F-RATING = 2-HR.

T-RATING = 1/4-HR.

L-RATING = SEE TABLE BELOW

WJ3200c.062717

GANGPLATES WITH NO CABLES WITH ANY CABLE MANAGEMENT DEVICE		
	L-RATING (AMBIENT AND 400° F)	
	CFM / GANGPLATE	CFM / SQ FT
CAP* INSTALLED IN ALL PORTS	<1	1.2
CAP* AND 1 EMPTY DEVICE	1	1.3
CAP* AND 2 EMPTY DEVICES	2	2.6
CAP* AND 3 EMPTY DEVICES (IF 16" GANGPLATE, THEN NO CAP INSTALLED)	2.5	3.2
4 EMPTY DEVICES (24" GANGPLATE ONLY)	3.5	4.5

GANGPLATES WITH COMBINATION OF CABLES WITH ANY CABLE MANAGEMENT DEVICE		
CFS-SL RK AND CFS-SL SK ARE LIMITED TO MAX 33% AGGREGATE FILL. CP 653 ALLOWS FOR MAX 100% VISUAL FILL	L-RATING (AMBIENT AND 400° F)	
	CFM / GANGPLATE	CFM / SQ FT
CAP* AND 1 DEVICE INSTALLED	2	2.6
CAP* AND 2 DEVICES INSTALLED	4	5.1
CAP* AND 3 DEVICES INSTALLED (IF 16" GANGPLATE, THEN NO CAP INSTALLED)	6	7.7
4 DEVICES INSTALLED (24" GANGPLATE ONLY)	8	10.2

GANGPLATES WITH CAT 5 OR CAT 6 COMPUTER CABLES ONLY WITH CP 653 SPEED SLEEVE		
CP 653 ALLOWS FOR MAX 100% VISUAL FILL OF CABLES	L-RATING (AMBIENT AND 400° F)	
	CFM / GANGPLATE	CFM / SQ FT
CAP* AND 1 DEVICE INSTALLED WITH CAT 5/6 CABLES ONLY	1.5	1.9
CAP* AND 2 DEVICES INSTALLED WITH CAT 5/6 CABLES ONLY	3	3.8
CAP* AND 3 DEVICES INSTALLED WITH CAT 5/6 CABLES ONLY (IF 16" GANGPLATE, THEN NO CAP INSTALLED)	4	5.1
4 DEVICES INSTALLED WITH CAT 5/6 CABLES ONLY (24" GANGPLATE ONLY)	5.5	7

* INDICATES CFS-SL CAP FIRESTOP GANGPLATE CAP INSTALLED TO CLOSE ALL PORT OPENINGS WHERE NO DEVICES ARE INSTALLED.



HILTI, Inc.
Plano, Texas USA (800) 879-8000

Sheet	3 of 3
Scale	-
Date	June 27, 2017

Drawing No.
**WJ
3200c**

MULTIPLE CABLE BUNDLES THROUGH CONCRETE OR BLOCK WALL ASSEMBLY

F-RATING = 2-HR.

T-RATING = 1/4-HR.

L-RATING = SEE TABLE BELOW

WJ3200c.062717

3. ONE OF THE FOLLOWING TO BE INSTALLED WITHIN EACH CIRCULAR OPENING PORT OF THE HILTI CFS-SL GP FIRESTOP GANGPLATE. THE TWO INTEGRAL SET SCREWS ARE TO BE TIGHTENED TO FIRMLY BEAR AGAINST EACH DEVICE TO RETAIN IT IN POSITION.
 - A. HILTI CP 653 SPEED SLEEVE (4") CENTERED WITHIN WALL. INNER FABRIC SEAL SHOULD BE TWISTED CLOSED.
 - B. HILTI CFS-SL RK FIRESTOP RETROFIT SLEEVE (4") CENTERED WITHIN WALL (ALSO SEE ITEM NO. 6).
 - C. HILTI CFS-SL SK FIRESTOP SLEEVE (4") CENTERED WITHIN WALL (ALSO SEE ITEM NO. 6).
4. [NOT SHOWN] HILTI CFS-SL CAP FIRESTOP GANGPLATE CAP TO BE INSTALLED TO CLOSE PORT OPENINGS WHERE NO DEVICES ARE INSTALLED. PLATE INSTALLED PER ACCOMPANYING INSTALLATION INSTRUCTIONS.
5. [OPTIONAL] CABLE BUNDLES TO BE A COMBINATION OF ANY OF THE FOLLOWING :
 - A. MAXIMUM 100 PAIR NO. 24 AWG TELEPHONE CABLE WITH PVC JACKET.
 - B. MAXIMUM 7/C NO. 12 AWG COPPER CONDUCTOR CONTROL CABLE WITH PVC OR XLPE JACKET AND INSULATION.
 - C. MAXIMUM 4/0 AWG TYPE RHH GROUND CABLE.
 - D. MAXIMUM 4 PAIR NO. 22 AWG CAT 5 OR 6 COMPUTER CABLE.
 - E. MAXIMUM RG 6/U COAXIAL CABLE.
 - F. MAXIMUM 1/2" DIAMETER FIBER-OPTIC CABLE (24 FIBER) WITH PVC OR PE JACKET AND INSULATION.
 - G. MAXIMUM 3/C NO. 12 AWG MC CABLE.
 - H. ANY CABLES, METAL-CLAD CABLE, OR ARMORED CABLE CURRENTLY CLASSIFIED UNDER THE THROUGH PENETRATING PRODUCTS CATEGORY.
6. HILTI CFS-PL FIRESTOP PLUG (2" OR 4") CUT TO FIT AROUND THE CABLE BUNDLE AND INSTALLED TIGHTLY WITHIN HILTI FIRESTOP RETROFIT SLEEVE OR FIRESTOP SLEEVE FLUSH WITH THE END OF THE SLEEVE ON BOTH SIDES OF THE WALL.

FIRESTOP DEVICE	MAXIMUM OPENING SIZE
24" PLATE :
SINGLE	5-1/2" x 20-1/2"
DOUBLE (STACKED)	13-1/4" x 20-1/2"
16" PLATE :
SINGLE	5-1/2" x 15"
DOUBLE (STACKED)	13-1/4" x 15"

NOTE : CABLES MAY REPRESENT 0% TO 60% OF CROSS-SECTIONAL AREA OF DEVICE FOR EACH CFS-RK AND CFS-SL SK FIRESTOP DEVICE AND 0% TO 100% VISUAL FILL FOR EACH CP 653 SPEED SLEEVE.

 Hilti Firestop Systems	HILTI, Inc. Plano, Texas USA (800) 879-8000	Sheet 2 of 3 Scale - Date June 27, 2017	Drawing No. WJ 3200c
	<i>Saving Lives through Innovation and Education</i>		