

UL/cUL SYSTEM NO. W-J-4048

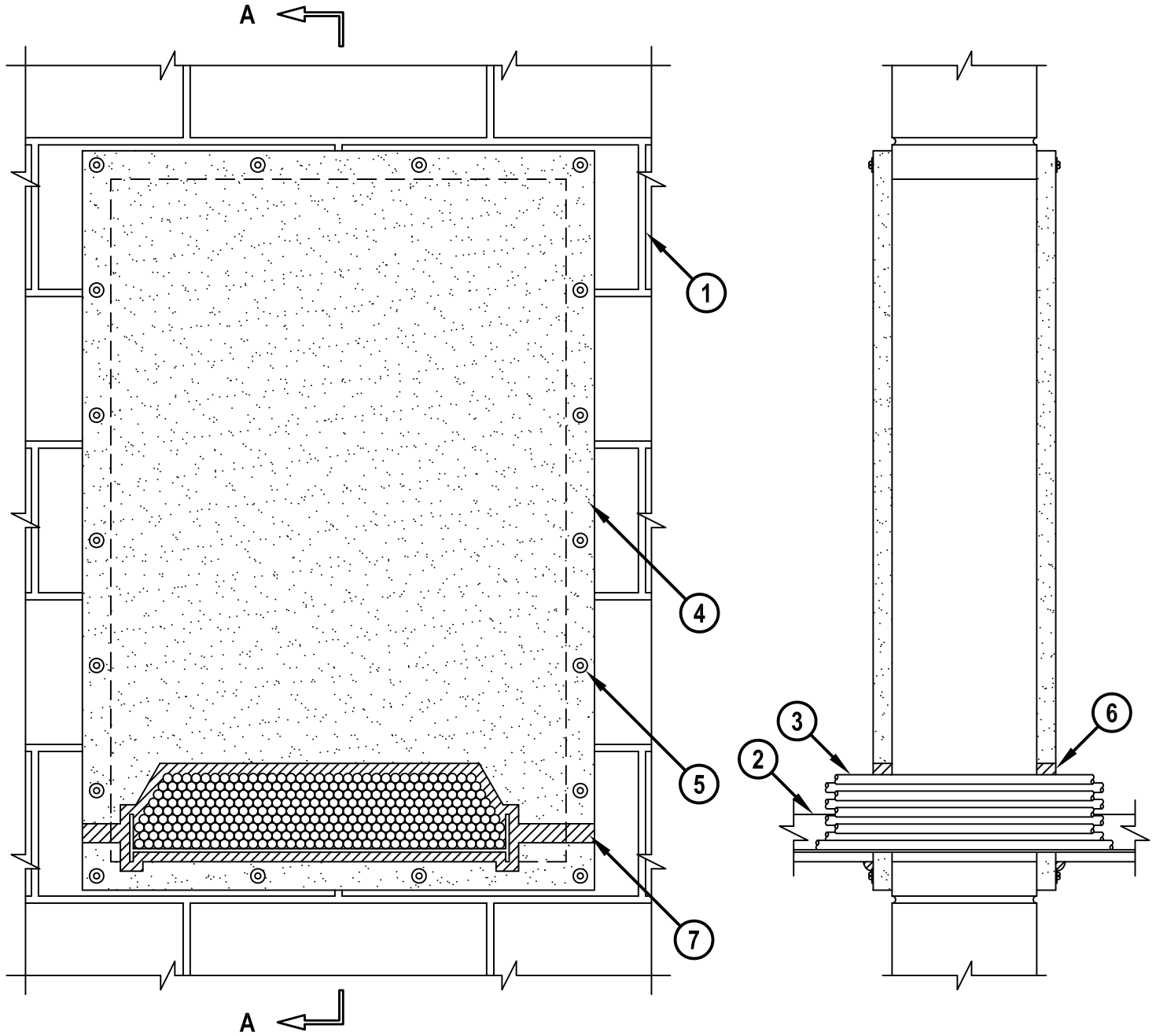
CABLE RACK THROUGH CONCRETE OR BLOCK WALL

F-RATING = 2-HR.
T-RATING = 1/4-HR.

WJ4048c.010915

FRONT VIEW

SECTION A-A



HILTI, Inc.
Tulsa, Oklahoma USA (800) 879-8000

Sheet	1 of 2
Scale	1/8" = 1"
Date	Jan. 09, 2015

Drawing No.
**WJ
4048c**

Saving Lives through Innovation and Education

CABLE RACK THROUGH CONCRETE OR BLOCK WALL

F-RATING = 2-HR.
T-RATING = 1/4-HR.

WJ4048c.010915

1. CONCRETE WALL ASSEMBLY (2-HR. FIRE-RATING) :
 - A. LIGHTWEIGHT OR NORMAL WEIGHT CONCRETE WALL (MINIMUM 6" THICK).
 - B. ANY UL/cUL CLASSIFIED CONCRETE BLOCK WALL.
2. MAXIMUM 20" x 2" STEEL CABLE RACK.
3. MAXIMUM 4" HIGH CABLE LOADING DEPTH TO CONSIST OF ANY OF THE FOLLOWING :
 - A. MAXIMUM 750 KCMIL TYPE RHW/RHH POWER CABLE OR WITH PVC JACKET.
 - B. MAXIMUM 3/C NO. 12 AWG METAL-CLAD CABLE.
 - C. MAXIMUM 300 PAIR NO. 24 AWG TELEPHONE CABLE WITH PVC JACKET.
 - D. MAXIMUM 24 FIBER, FIBER-OPTIC CABLE WITH PVC JACKET.
 - E. MAXIMUM 7/C NO. 12 AWG CABLE WITH PVC JACKET
 - F. MAXIMUM 3/C NO. 2/0 AWG COPPER CONDUCTOR PVC JACKETED ALUMINUM CLAD OR STEEL CLAD TECK 90 CABLE.
 - G. ANY UL CLASSIFIED ARMORED OR METAL CLAD CABLE.
4. HILTI CP 675T FIRESTOP BOARD CUT TO OVERLAP OPENING MINIMUM 1" ON ALL SIDES. TWO PIECES POSITIONED AROUND CABLES/CABLE RACK WITH CUT EDGES TIGHTLY BUTTED.
5. FASTEN HILTI CP 675T FIRESTOP BOARD TO FRAMING MATERIAL UTILIZING 3/16" x 1-1/4" LONG STEEL CONCRETE SCREW ANCHORS WITH 1-1/4" DIAMETER STEEL WASHERS AT EACH CORNER OF FIRESTOP BOARD AND MAXIMUM 8" C/C AROUND PERIMETER OF FIRESTOP BOARD ON BOTH SIDES OF WALL (SEE NOTE NO. 2 BELOW).
6. MINIMUM 1" DEPTH HILTI FIRESTOP PUTTY APPLIED BETWEEN FIRESTOP BOARD AND CABLES/ CABLE RACK.
7. HILTI CP 619T FIRESTOP PUTTY ROLL TO BE CENTERED OVER SEAM ON BOTH SIDES OF WALL.

NOTES :

1. MAXIMUM SIZE OF OPENING = 24" x 36".
2. BOTTOM PIECE OF HILTI CP 675T FIRESTOP BOARD CUT TO FOLLOW CONTOUR OF CABLE RACK WITH A MINIMUM 0" TO MAXIMUM 1" SPACE BETWEEN BOARD AND CABLE RACK. TOP PIECE CUT WITH A MINIMUM 1/8" TO MAXIMUM 1" SPACE BETWEEN BOARD AND CABLE RACK AND A MINIMUM 1/4" TO MAXIMUM 1" SPACE BETWEEN BOARD AND CABLES.
3. ANNULAR SPACE BETWEEN CABLE RACK AND PERIPHERY OF OPENING = MINIMUM 0", MAXIMUM 34".
4. APPLY MINIMUM 1/2" BEAD HILTI FIRESTOP PUTTY AT POINT OF CONTACT.
5. PRIOR TO FASTENING HILTI CP 675T FIRESTOP BOARD TO WALL ASSEMBLY, APPLY A MINIMUM 1/8" WIDE BEAD OF HILTI FS-ONE MAX OR FS-ONE INTUMESCENT FIRESTOP SEALANT OR MINIMUM 1" WIDE CP 619T FIRESTOP PUTTY ROLL AROUND PERIMETER OF EACH BOARD.



HILTI, Inc.
Tulsa, Oklahoma USA (800) 879-8000

Sheet	2 of 2
Scale	-
Date	Jan. 09, 2015

Drawing No.
**WJ
4048c**