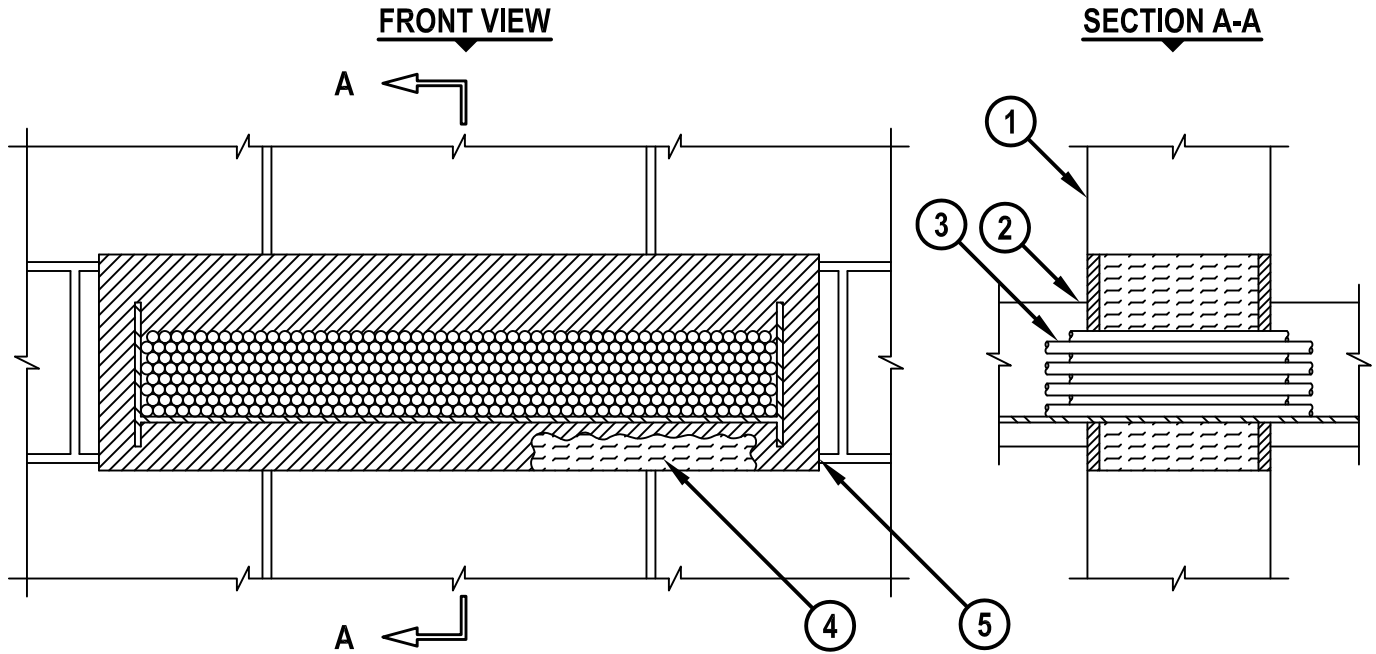


CABLE TRAY THROUGH CONCRETE BLOCK WALL ASSEMBLY

F-RATING = 2-HR.
T-RATING = 1/2-HR.

WJ4059b.010915



1. CONCRETE BLOCK WALL ASSEMBLY (2-HR. FIRE-RATING) :
 - A. LIGHTWEIGHT OR NORMAL WEIGHT CONCRETE WALL (MINIMUM 5" THICK).
 - B. ANY UL/cUL CLASSIFIED CONCRETE BLOCK WALL.
2. ALUMINUM OR STEEL OPEN LADDER CABLE TRAY (MAXIMUM SIZE : 24" x 6")
3. CABLES TO BE ANY COMBINATION OF THE FOLLOWING :
 - A. MAXIMUM 300 PAIR NO. 24 AWG TELEPHONE CABLE WITH PVC JACKET.
 - B. MAXIMUM 750 KCMIL SINGLE CONDUCTOR POWER CABLE WITH PVC JACKET.
 - C. MAXIMUM 1/2" DIAMETER FIBER-OPTIC CABLE (MAXIMUM 24 FIBER) WITH PVC JACKET.
 - D. MAXIMUM 3/C NO. 12 AWG METAL-CLAD CABLE.
4. MINIMUM 4" THICKNESS MINERAL WOOL (MIN. 4 PCF DENSITY) TIGHTLY PACKED AND RECESSED TO ACCOMMODATE FIRESTOP SEALANT.
5. MINIMUM 1/2" DEPTH HILTI FS-ONE MAX OR FS-ONE INTUMESCENT FIRESTOP SEALANT.

NOTES : 1. MAXIMUM SIZE OF OPENING = 30" x 9".
 2. ANNULAR SPACE = MINIMUM 0", MAXIMUM 3".
 3. MAXIMUM AREA OF CABLES SHALL BE 40% OF CROSS-SECTIONAL AREA OF CABLE TRAY (APPROXIMATE 5" CABLE LOADING DEPTH).



HILTI, Inc.
Tulsa, Oklahoma USA (800) 879-8000

Sheet	1 of 1
Scale	1/8" = 1"
Date	Jan. 09, 2015

Drawing No.
**WJ
4059b**