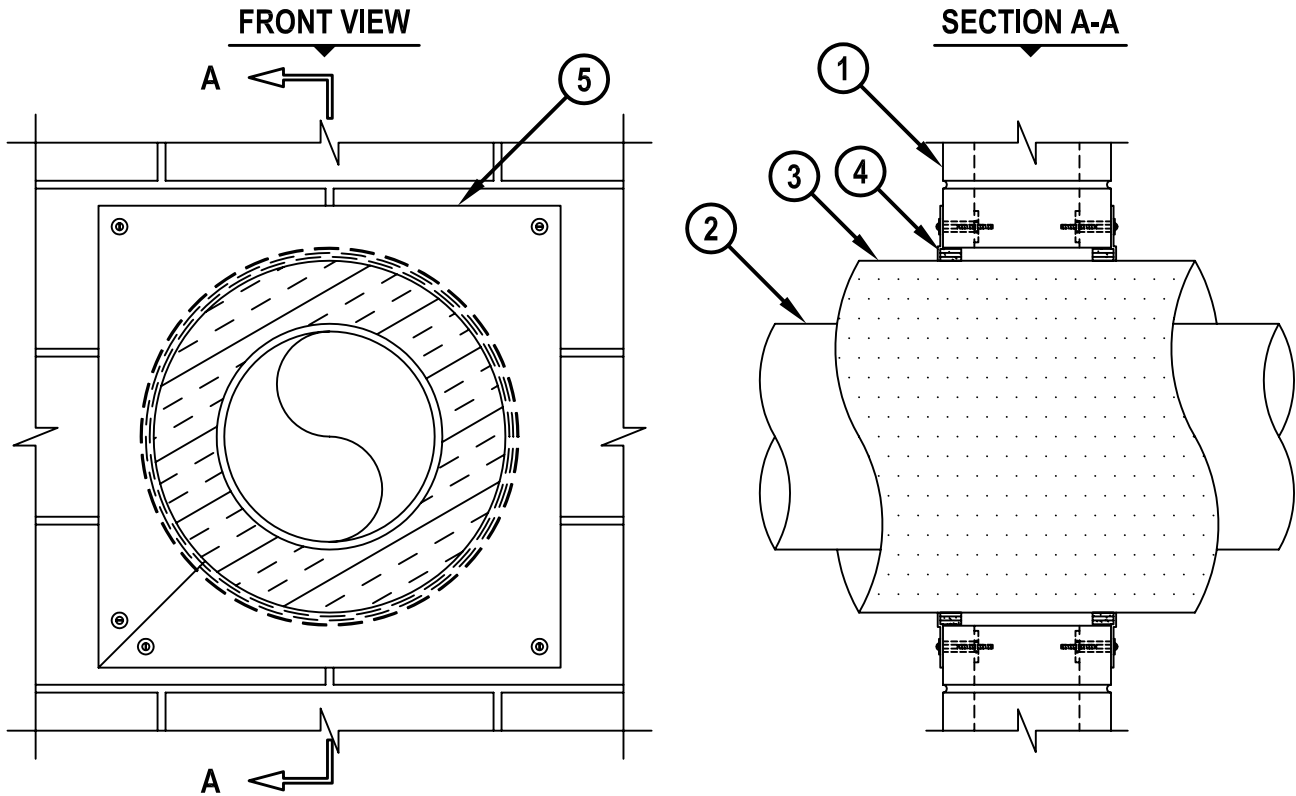


**INSULATED METAL PIPE THROUGH CONCRETE BLOCK WALL ASSEMBLY**

F-RATING = 2-HR.

T-RATING = 0-HR. AND 1-1/2-HR.

WJ5058c.061505



1. ANY UL/cUL CLASSIFIED CONCRETE BLOCK WALL ASSEMBLY (MINIMUM 7-5/8" THICK) (2-HR. FIRE-RATING).
2. PENETRATING ITEM TO BE ONE OF THE FOLLOWING :
  - A. MAXIMUM 10" NOMINAL DIAMETER STEEL PIPE (SCHEDULE 10 OR HEAVIER).
  - B. MAXIMUM 10" NOMINAL DIAMETER CAST OR DUCTILE IRON PIPE.
  - C. MAXIMUM 4" NOMINAL DIAMETER COPPER PIPE OR TUBE.
3. MAXIMUM 3" THICK GLASS-FIBER PIPE INSULATION.
4. HILTI CP 648E WRAP STRIP (NOMINAL 3/16" THICK x 1" WIDE) CONTINUOUSLY WRAPPED AROUND THE OUTER CIRCUMFERENCE OF THE PIPE INSULATION, COVERING THREE TIMES, WITH ENDS BUTTED AND HELD IN PLACE WITH TAPE. WRAP STRIP TO BE SLID INTO ANNULAR SPACE, SUCH THAT 1/8" OF THE WRAP STRIP PROTRUDES FROM THE WALL SURFACE.
5. SHEET METAL COVER PLATE (MIN. 25 GA.) ATTACHED TO BLOCK WALL BY MEANS OF 1/8" DIAMETER x 3" LONG TOGGLE BOLTS IN CONJUNCTION WITH 3/4" DIAMETER STEEL FENDER WASHERS.

**NOTES :** 1. MAXIMUM DIAMETER OF OPENING = 18".  
 2. ANNULAR SPACE = MINIMUM 1/2", MAXIMUM 3/4".  
 3. SHEET METAL COVER PLATE TO EXTEND A MINIMUM 2" BEYOND THE PERIPHERY OF THE OPENING.  
 4. WHEN PIPE INSULATION IS LESS THAN 3" THICK, T-RATING = 0-HR.



HILTI, Inc.  
 Tulsa, Oklahoma USA (918) 252-6000

Sheet	1 of 1
Scale	7/64" = 1"
Date	June 15, 2005

Drawing No.  
**WJ**  
**5058c**