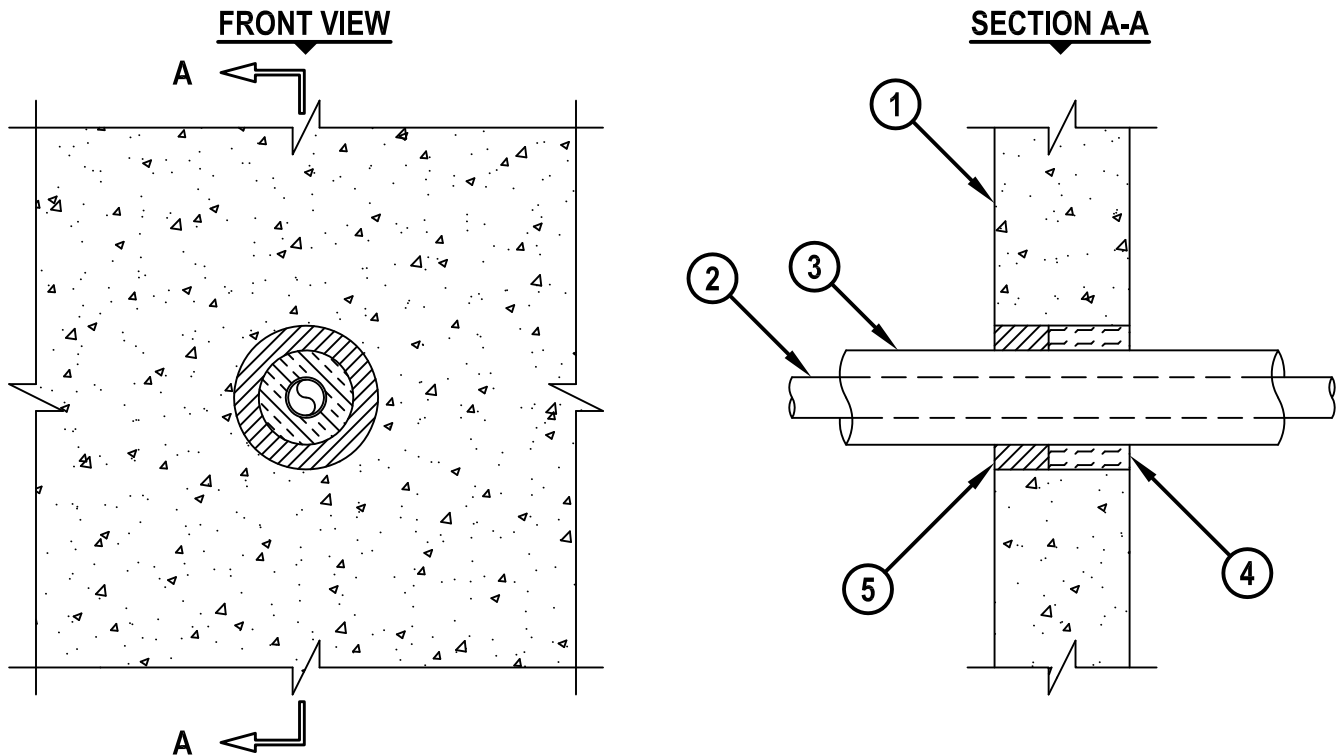


UL/cUL SYSTEM NO. W-J-5066

# INSULATED METAL PIPE THROUGH CONCRETE WALL OR CONCRETE BLOCK SHAFT WALL ASSEMBLY

F-RATING = 1-HR. OR 2-HR.  
T-RATING = 1/2-HR.

WJ5066b.010915



1. CONCRETE WALL ASSEMBLY (1-HR. OR 2-HR. FIRE-RATING) (2-HR. SHOWN) :
  - A. LIGHTWEIGHT OR NORMAL WEIGHT CONCRETE WALL (MINIMUM 3-3/4" THICK).
  - B. ANY UL/cUL CLASSIFIED CONCRETE BLOCK WALL.
2. MAXIMUM 1" NOMINAL DIAMETER COPPER PIPE.
3. NOMINAL 3/4" THICKNESS AB/PVC PIPE INSULATION.
4. MINIMUM 1-5/8" OR 2-1/4" THICKNESS MINERAL WOOL (MIN. 4 PCF DENSITY) TIGHTLY PACKED AND RECESSED ON ONE SIDE OF WALL FOR 1-HR. OR 2-HR. FIRE-RATED WALL, RESPECTIVELY.
5. MINIMUM 1-1/2" DEPTH HILTI FS-ONE MAX OR FS-ONE INTUMESCENT FIRESTOP SEALANT.

**NOTES :** 1. MAXIMUM DIAMETER OF OPENING = 4".  
2. ANNULAR SPACE = MINIMUM 1/4", MAXIMUM 1-1/8".  
3. THIS FIRESTOP SYSTEM WAS DESIGNED AND TESTED FOR APPLICATIONS IN WHICH THERE IS LIMITED OR NO ACCESS AVAILABLE ON ONE SIDE OF WALL.



HILTI, Inc.  
Tulsa, Oklahoma USA (800) 879-8000

Sheet	1 of 1
Scale	3/16" = 1"
Date	Jan. 09, 2015

Drawing No.

**WJ  
5066b**

*Saving Lives through Innovation and Education*