

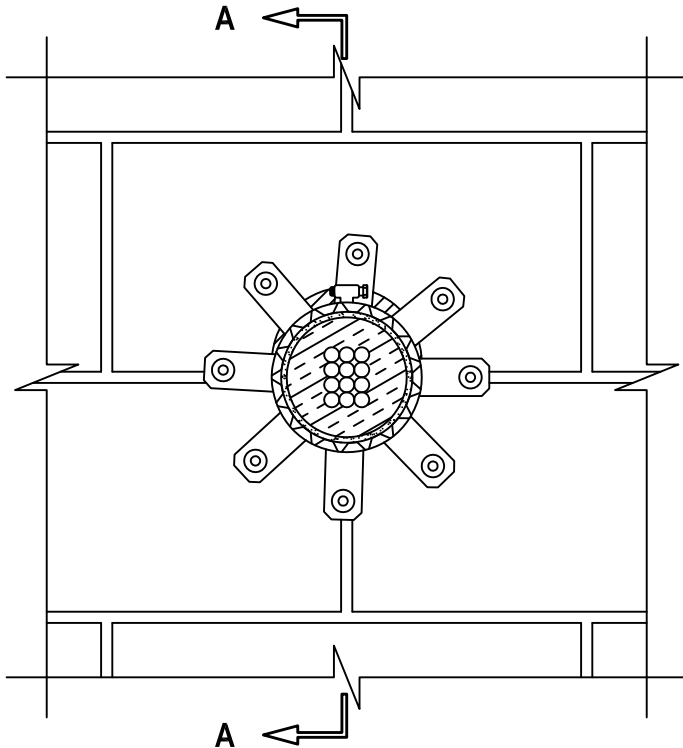
UL SYSTEM NO. W-J-5122

INSULATED BEVERAGE SERVICE LINES THROUGH CONCRETE WALL OR CONCRETE BLOCK WALL ASSEMBLY

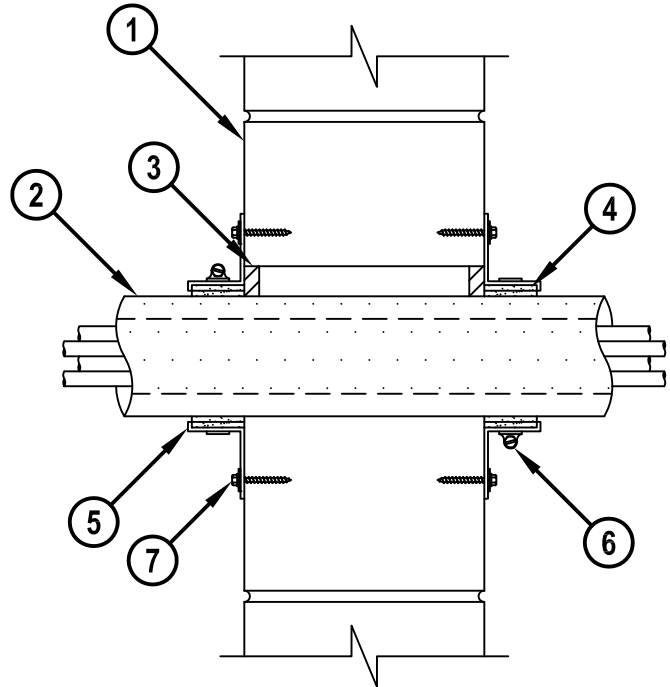
F-RATING = 2-HR.
T-RATING = 1-3/4-HR.

WJ5122c-010915

FRONT VIEW



SECTION A-A



1. CONCRETE WALL ASSEMBLY (2-HR. FIRE-RATING) :
 - A. LIGHTWEIGHT OR NORMAL WEIGHT CONCRETE WALL (MINIMUM 5" THICK).
 - B. ANY UL CLASSIFIED CONCRETE BLOCK WALL ASSEMBLY.
2. MAXIMUM 4" DIAMETER INSULATED BEVERAGE LINE CONSISTING OF THE FOLLOWING :
 - A. NOMINAL 1/2" DIAMETER PE OR PEX TUBING (CLOSED PIPING SYSTEM) (MAX. QTY. = 12).
 - B. MAXIMUM 3/4" THICK AB/PVC PIPE INSULATION.
3. MINIMUM 1/2" DEPTH HILTI FS-ONE MAX OR FS-ONE INTUMESCENT FIRESTOP SEALANT.
4. HILTI CP 648E WRAP STRIP (NOMINAL 3/16" THICK x 1-3/4" WIDE) CONTINUOUSLY WRAPPED AROUND THE OUTER CIRCUMFERENCE OF BUNDLE, TWICE, AND HELD IN PLACE WITH TAPE.
5. HILTI RETAINING COLLAR WRAPPED OVER WRAP STRIPS, OVERLAPPING MINIMUM 1".
6. NOMINAL 1/2" WIDE STAINLESS STEEL HOSE CLAMP(S) FASTENED AT MID-HEIGHT OF RETAINING COLLAR.
7. EVERY TAB OF RETAINING COLLAR SECURED TO WALL WITH 3/16" x 1-3/4" LONG STEEL CONCRETE SCREW ANCHORS IN CONJUNCTION WITH 3/4" DIAMETER STEEL WASHERS (EX. HILTI KWIK-CON).

NOTES : 1. MAXIMUM DIAMETER OF OPENING = 5".
2. ANNULAR SPACE = MINIMUM 0", MAXIMUM 1".



HILTI, Inc.
Tulsa, Oklahoma USA (800) 879-8000

Sheet	1 of 1
Scale	5/32" = 1"
Date	Jan. 09, 2015

Drawing No.

**WJ
5122c**

Saving Lives through Innovation and Education