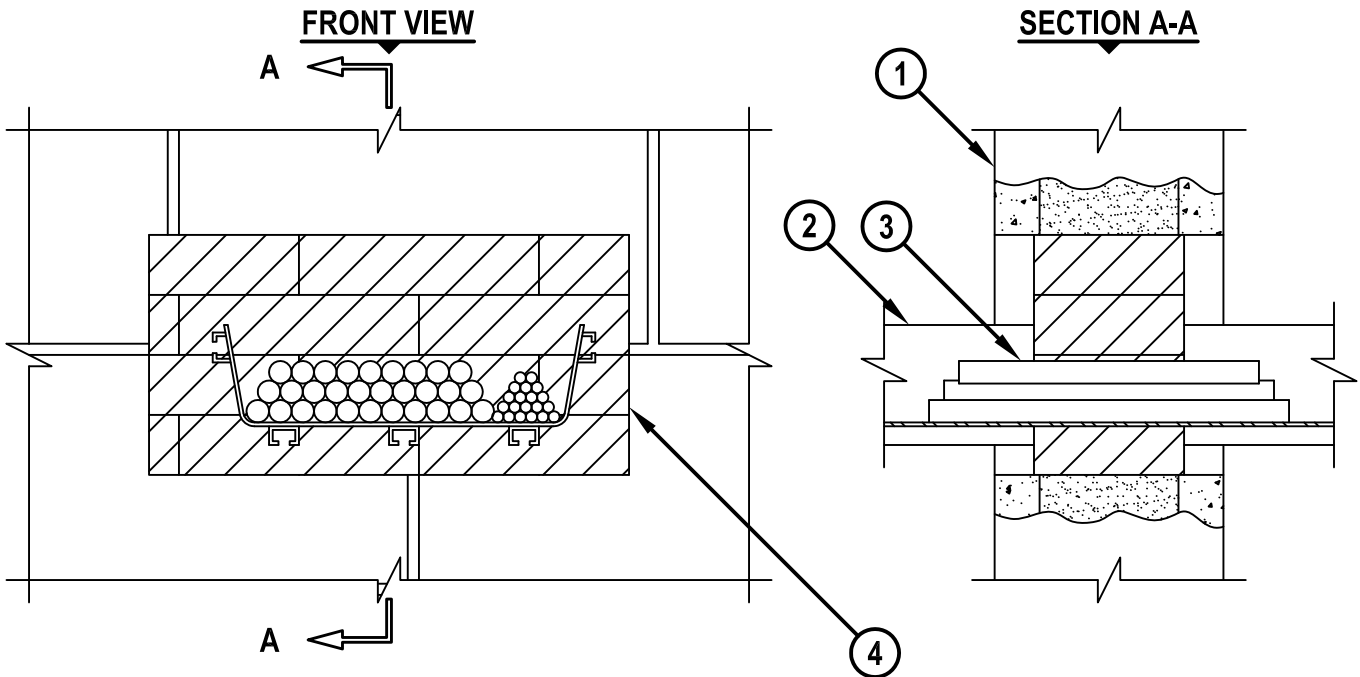


**FIBER OPTIC TRAY THROUGH CONCRETE WALL OR BLOCK WALL ASSEMBLY**

F-RATING = 2-HR.

T-RATING = 1-HR. OR 1 1/2-HR.

WJ6003e.020916



1. CONCRETE WALL ASSEMBLY (2-HR. FIRE-RATING) :
  - A. LIGHTWEIGHT OR NORMAL WEIGHT CONCRETE WALL (MINIMUM 5" THICK).
  - B. ANY UL/cUL CLASSIFIED SOLID OR FILLED CONCRETE BLOCK WALL.
2. MAXIMUM 12" x 4" FIBER OPTIC CABLE TRAY (ABS) WITH OPTIONAL COVER PLATE (SEE NOTE NO. 3 BELOW).
3. MAXIMUM 1/2" DIAMETER FIBER OPTIC CABLES WITH PVC JACKET, MAY BE INSTALLED WITHIN CABLE TRAY. CABLES TO FILL MAXIMUM 40% OF CROSS-SECTIONAL AREA OF FIBER OPTIC CABLE TRAY.
4. HILTI CFS-BL FIRESTOP BLOCK (2" THICK x 8" WIDE x 5" DEEP, REFERENCE : FRONT VIEW) FIRMLY PACKED AND CENTERED WITH THE OPENING.

**NOTES :**

1. MAXIMUM SIZE OF OPENING = 16" x 8".
2. ANNULAR SPACE = MINIMUM 0", MAXIMUM 4".
3. WHEN OPTIONAL COVER PLATE IS USED, FIRESTOP BLOCKS SHALL BE PLACED WITHIN THE FIBER OPTIC CABLE TRAY TO FILL VOID.
4. APPLY HILTI FS-ONE MAX OR FS-ONE INTUMESCENT FIRESTOP SEALANT, HILTI CP 618 FIRESTOP PUTTY STICK, HILTI CP 620 FIRE FOAM, OR HILTI CP 660 FIRESTOP FOAM INTO ANY VOID THAT MAY EXIST (AROUND PENETRANTS, INTO INTERSTICES OF CABLES, OR BETWEEN FIRESTOP BLOCKS), TO MAXIMUM EXTENT POSSIBLE.



HILTI, Inc.  
Plano, Texas USA (800) 879-8000

Sheet	1 of 1
Scale	5/32" = 1"
Date	Feb. 09, 2016

Drawing No.  
**WJ  
6003e**