

METAL DUCT THROUGH CONCRETE WALL OR CONCRETE BLOCK WALL ASSEMBLY

F-RATING = 1-HR. OR 2-HR.

T-RATING = 0-HR.

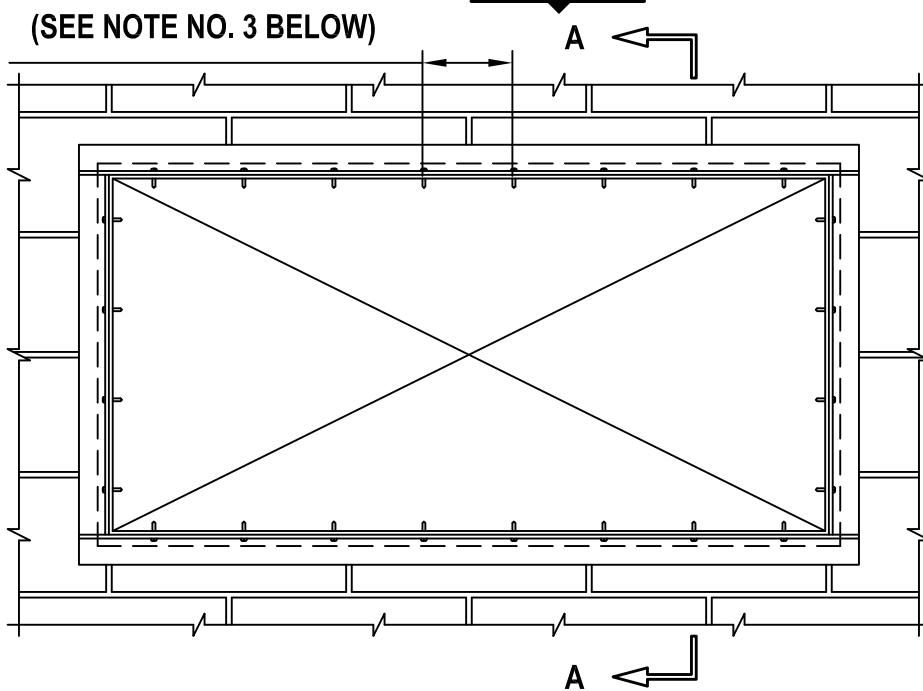
L-RATING AT AMBIENT = LESS THAN 1 CFM / SQ FT

L-RATING AT 400°F = LESS THAN 1 CFM / SQ FT

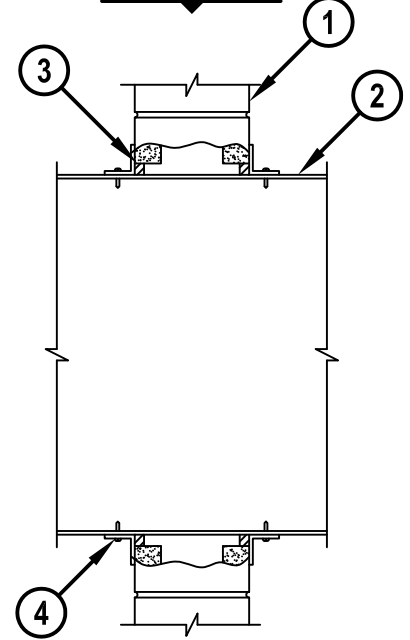
WJ7021k.010915

MAXIMUM 6" C/C SPACING
(SEE NOTE NO. 3 BELOW)

FRONT VIEW



SECTION A-A



1. CONCRETE WALL ASSEMBLY (1-HR. OR 2-HR. FIRE-RATING) :
 - A. LIGHTWEIGHT OR NORMAL WEIGHT CONCRETE WALL (MINIMUM 5" THICK).
 - B. ANY UL/cUL CLASSIFIED CONCRETE BLOCK WALL.
2. RECTANGULAR SHEET METAL DUCT (MAXIMUM SIZE : 24" x 48", MIN. 24 GA. THICKNESS).
(NOTE : NOT FOR USE IN DUCT SYSTEMS CONTAINING A FIRE DAMPER.)
3. MINIMUM 5/8" DEPTH HILTI FS-ONE MAX OR FS-ONE INTUMESCENT FIRESTOP SEALANT, HILTI CP 601S ELASTOMERIC FIRESTOP SEALANT, HILTI CP 606 FLEXIBLE FIRESTOP SEALANT, OR HILTI CFS-S SIL GG FIRESTOP SILICONE SEALANT.
4. [NOT SHOWN] APPLY MINIMUM 1/2" BEAD HILTI FS-ONE MAX OR FS-ONE INTUMESCENT FIRESTOP SEALANT, HILTI CP 601S ELASTOMERIC FIRESTOP SEALANT, HILTI CP 606 FLEXIBLE FIRESTOP SEALANT SEALANT, OR HILTI CFS-S SIL GG FIRESTOP SILICONE SEALANT AT POINT OF CONTACT PRIOR TO ATTACHING STEEL ANGLE.

NOTES : 1. MAXIMUM AREA OF OPENING = 1300 SQ. IN. WITH A MAXIMUM DIMENSION OF 50 IN.
 2. ANNULAR SPACE = MINIMUM 0", MAXIMUM 2".
 3. AFTER SEALING SPACE BETWEEN DUCT AND CONCRETE WALL ASSEMBLY WITH HILTI FIRESTOP SEALANT, FASTEN STEEL ANGLE (MIN. 18 GA.) TO DUCT WITH MINIMUM NO. 8 x 3/4" LONG SHEET METAL SCREWS. STEEL ANGLE TO OVERLAP DUCT BY MINIMUM 2" AND CONCRETE WALL ASSEMBLY BY MINIMUM 1". ANGLE DOES NOT HAVE TO BE FASTENED TO CONCRETE WALL ASSEMBLY.



HILTI, Inc.
Tulsa, Oklahoma USA (800) 879-8000

Sheet	1 of 1
Scale	5/64" = 1"
Date	Jan. 09, 2015

Drawing No.
**WJ
7021k**