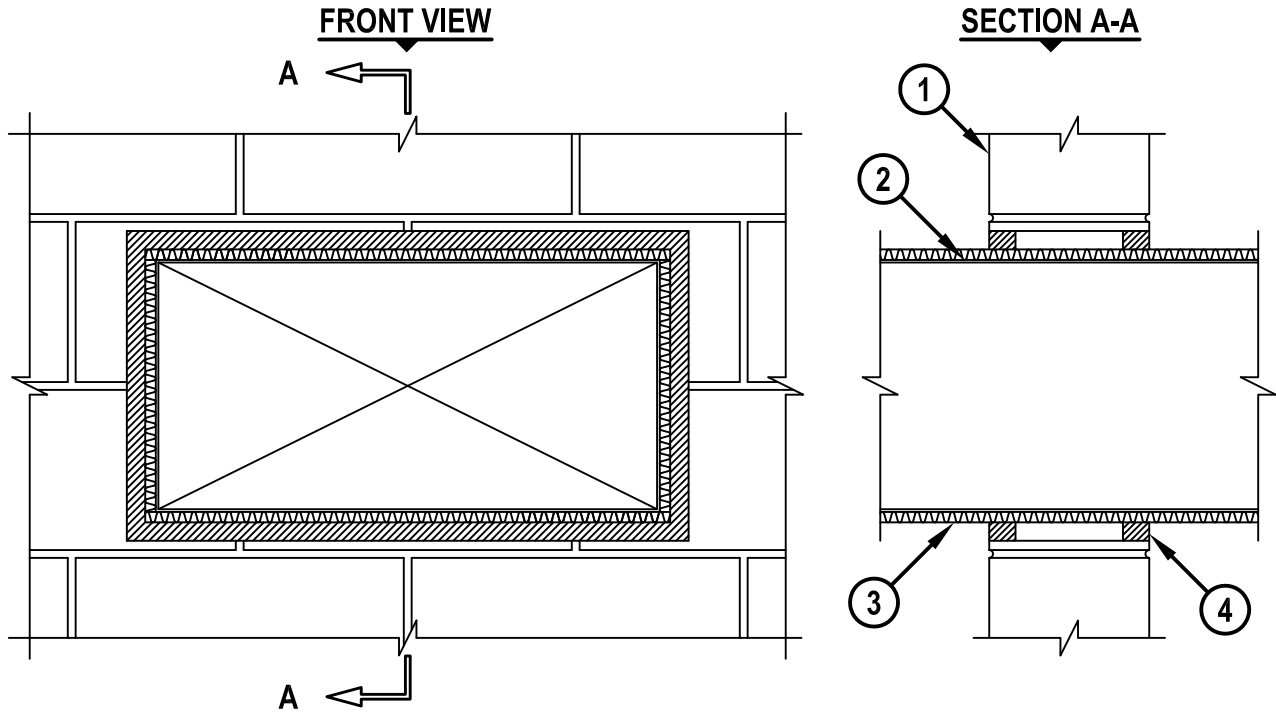


INSULATED DUCT THROUGH CONCRETE WALL OR BLOCK WALL ASSEMBLY

F-RATING = 1-HR. OR 2-HR.
T-RATING = 1/2-HR. OR 3/4-HR.

WJ7029b.010915



1. CONCRETE WALL ASSEMBLY (1-HR. OR 2-HR. FIRE-RATING) (2-HR. SHOWN) :
 - A. LIGHTWEIGHT OR NORMAL WEIGHT CONCRETE WALL (MINIMUM 5" THICK).
 - B. ANY UL/ULC CLASSIFIED CONCRETE BLOCK WALL.
2. MAXIMUM 24" x 12" RECTANGULAR SHEET METAL DUCT (MINIMUM 24 GA.).
(NOTE : NOT FOR USE IN DUCT SYSTEMS CONTAINING A FIRE DAMPER).
3. MAXIMUM 1-1/2" THICKNESS GLASS FIBER DUCT INSULATION (MIN. 3/4 PCF DENSITY) WITH FOIL-SCRIM-KRAFT FACING (SEE NOTE NO. 2 BELOW).
4. HILTI FS-ONE MAX OR FS-ONE INTUMESCENT FIRESTOP SEALANT :
 - A. MINIMUM 5/8" DEPTH OF SEALANT FOR A 1-HR. FIRE-RATING.
 - B. MINIMUM 1-1/4" DEPTH OF SEALANT FOR A 2-HR. FIRE-RATING.

NOTES : 1. MAX. AREA OF OPENING = 395 SQ. IN. WITH A MAX. DIM. OF 26-3/4".
2. INSULATION SHOULD BE COMPRESSED 50% SUCH THAT THE ANNULAR SPACE = MIN. 1/4", MAX. 1".



HILTI, Inc.
Tulsa, Oklahoma USA (800) 879-8000

Sheet	1 of 1
Scale	7/64" = 1"
Date	Jan. 09, 2015

Drawing No.
**WJ
7029b**