

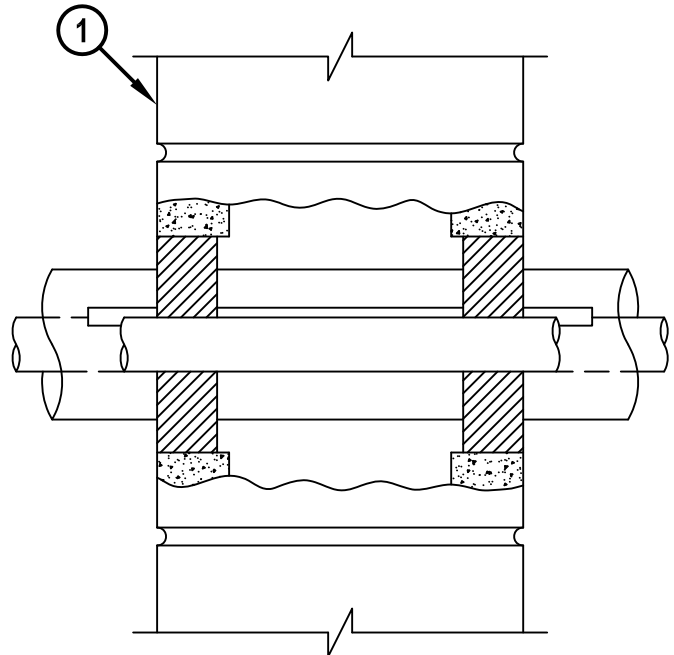
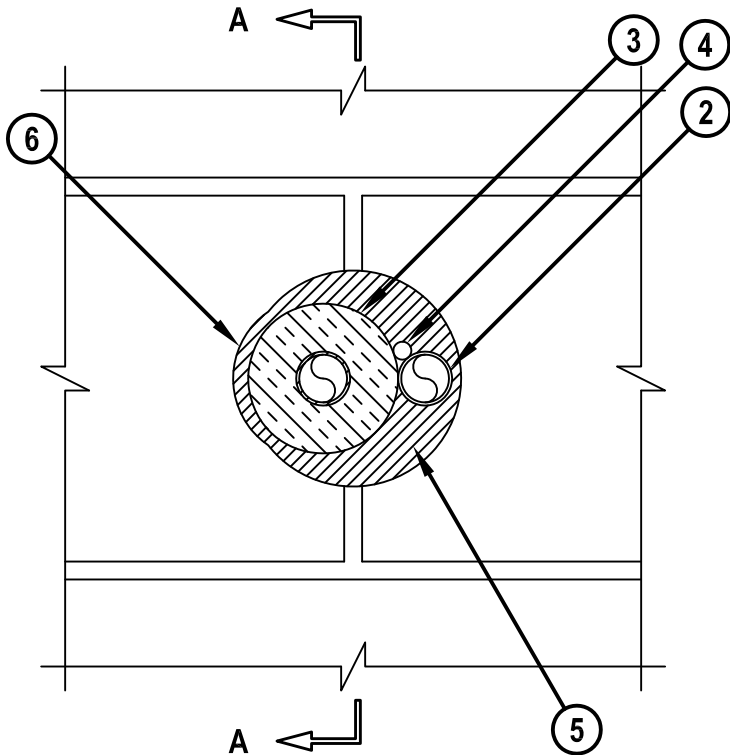
HVAC LINE SET THROUGH CONCRETE OR CONCRETE BLOCK WALL ASSEMBLY

F-RATING = 2-HR.
T-RATING = 1/4-HR.

WJ8022c.011515

FRONT VIEW

SECTION A-A



1. CONCRETE WALL ASSEMBLY (2-HR. FIRE-RATING) :
 - A. LIGHTWEIGHT OR NORMAL WEIGHT CONCRETE WALL (MINIMUM 6" THICK).
 - B. ANY UL/cUL CLASSIFIED CONCRETE BLOCK WALL.
2. MAXIMUM 1" NOMINAL DIAMETER COPPER PIPE OR TUBE (MAXIMUM QUANTITY = 2).
3. NOMINAL 3/4" THICK AB/PVC PIPE INSULATION INSTALLED ON ONE COPPER PIPE.
4. MAXIMUM 4 PAIR NO. 18 AWG THERMOSTAT CABLE WITH PVC JACKET.
5. MINIMUM 1-1/4" DEPTH HILTI FS-ONE MAX OR FS-ONE INTUMESCENT FIRESTOP SEALANT.
6. MINIMUM 1/2" BEAD HILTI FS-ONE MAX OR FS-ONE INTUMESCENT FIRESTOP SEALANT APPLIED AT POINT OF CONTACT.

NOTES : 1. MAXIMUM DIAMETER OF OPENING = 4-1/2".
 2. ANNULAR SPACE BETWEEN PENETRANTS AND PERIPHERY OF OPENING = MINIMUM 0", MAXIMUM 1-1/4".
 3. ANNULAR SPACE BETWEEN PENETRANTS = 0".



HILTI, Inc.
Tulsa, Oklahoma USA (800) 879-8000

Sheet	1 of 1
Scale	1/4" = 1"
Date	Jan. 15, 2015

Drawing No.
**WJ
8022c**