

BLANK OPENING IN GYPSUM WALL ASSEMBLY

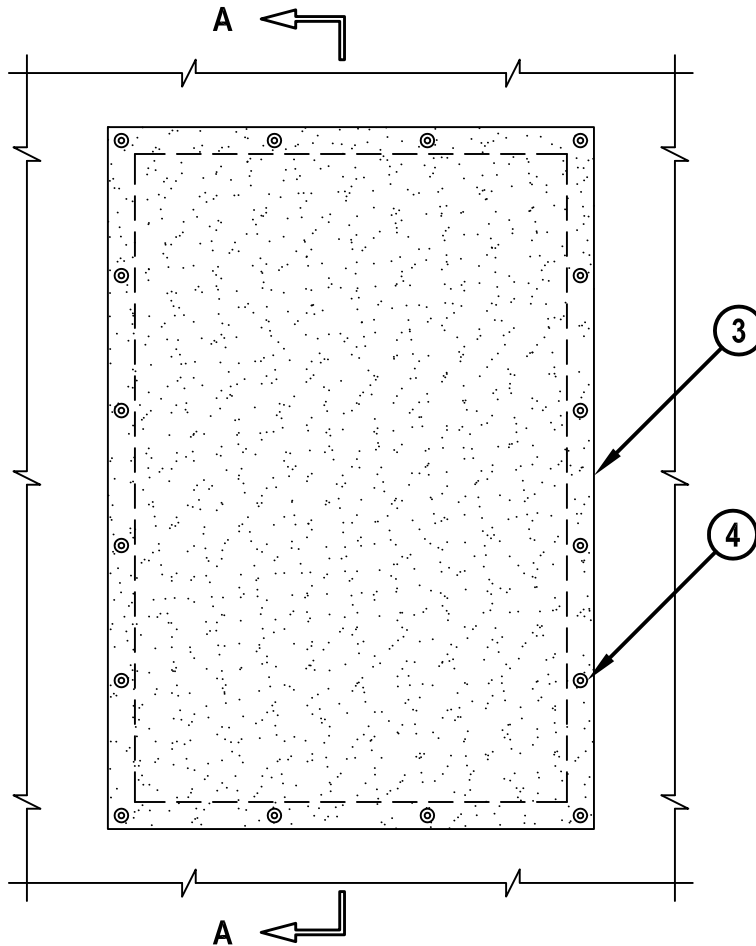
F-RATING = 1-HR. OR 2-HR.

T-RATING = 1-HR.

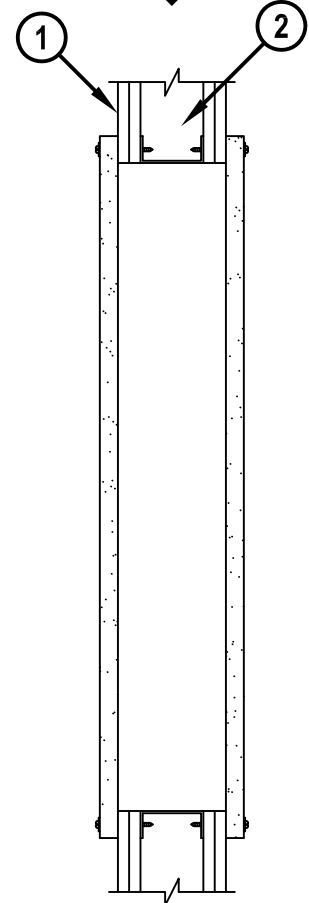
L-RATING AT AMBIENT = LESS THAN 1 CFM / SQ FT

L-RATING AT 400°F = LESS THAN 1 CFM / SQ FT

FRONT VIEW



SECTION A-A



WL0014c.011015

1. GYPSUM WALL ASSEMBLY (UL/cUL CLASSIFIED U300 OR U400 SERIES) (1-HR. OR 2-HR. FIRE-RATING) (2-HR. SHOWN).
2. (NOT SHOWN). WOOD STUDS TO CONSIST OF NOMINAL 2" x 4" LUMBER. STEEL STUDS TO BE MINIMUM 3-1/2" WIDE. OPENING TO BE COMPLETELY "FRAMED-OUT" WITH STUD MATERIAL.
3. HILTI CP 675 T FIRESTOP BOARD CUT TO OVERLAP OPENING MINIMUM 1" ON ALL SIDES.
4. FASTEN HILTI CP 675 T FIRESTOP BOARD TO FRAMING MATERIAL UTILIZING 3" LONG STEEL SCREWS WITH R-32 STEEL WASHERS AT EACH CORNER OF OPENING AND MAXIMUM 8" C/C AROUND PERIMETER OF FIRESTOP BOARD ON BOTH SIDES OF WALL (SEE NOTE NO. 2 BELOW).

NOTES : 1. MAXIMUM SIZE OF OPENING = 24" x 36".
 2. PRIOR TO FASTENING HILTI CP 675 T FIRESTOP BOARD TO WALL ASSEMBLY, APPLY A MINIMUM 1/8" WIDE BEAD OF HILTI FS-ONE MAX OR FS-ONE INTUMESCENT FIRESTOP SEALANT OR MINIMUM 1" WIDE CP 619 T PUTTY ROLL AROUND PERIMETER OF EACH BOARD.



HILTI, Inc.
 Tulsa, Oklahoma USA (800) 879-8000

Sheet	1 of 1
Scale	3/32" = 1"
Date	Jan. 10, 2015

Drawing No.

**WL
0014c**