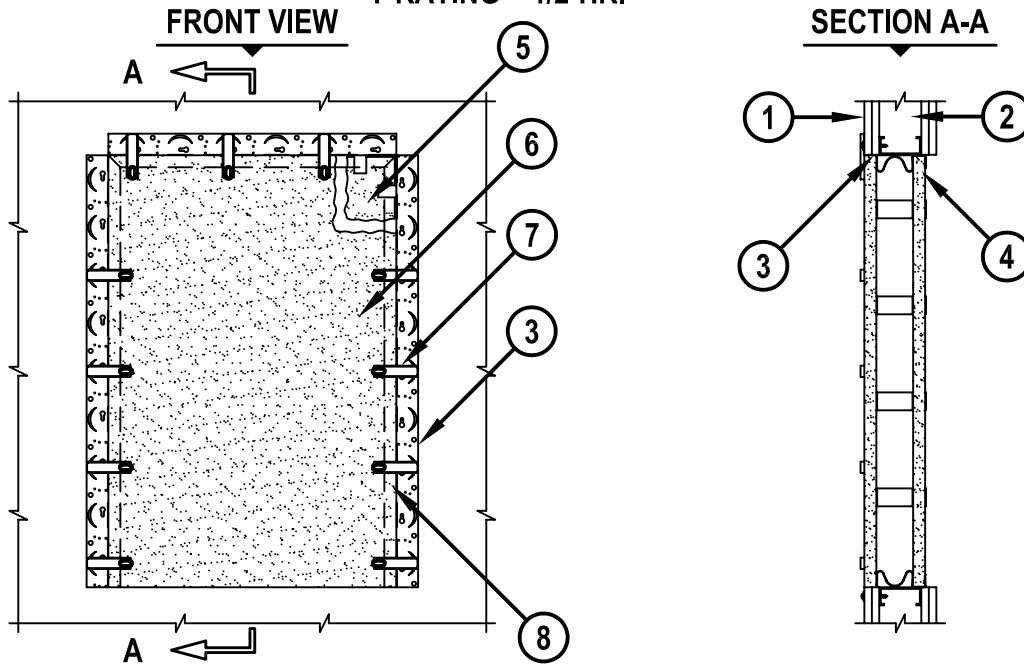


BLANK OPENING IN GYPSUM WALL ASSEMBLY

F-RATING = 1-HR. OR 2-HR.

T-RATING = 1/2-HR.



1. GYPSUM WALL ASSEMBLY (UL/cUL CLASSIFIED U400 SERIES) (1-HR. OR 2-HR. FIRE-RATING) (2-HR. SHOWN).
2. STEEL STUDS TO BE MINIMUM 3-1/2" WIDE. OPENING TO BE COMPLETELY "FRAMED-OUT".
3. FASTEN HILTI CP 675 Z-FRAME TO STUD MATERIAL ON THREE SIDES OF OPENING (AS SHOWN) WITH 2-5/8" SELF-DRILLING STEEL SCREWS AT MAXIMUM 12" C/C SPACING.
4. HILTI CP 619T FIRESTOP PUTTY ROLL APPLIED TO THE BACK LIP OF CP 675 Z-FRAME AND FROM SIDE TO SIDE AT THE BOTTOM OF OPENING FLUSH WITH FRONT SURFACE OF WALL AND BACK EDGES OF Z-FRAME (NOT SHOWN).
5. HILTI CP 675 DISTANCE HOLDERS PLACED OVER ONE HILTI CP 675T FIRESTOP BOARD AT MAXIMUM 8" C/C SPACING AROUND PERIMETER OF FIRESTOP BOARD AND INSERTED FLUSH WITH BACK EDGE OF Z-FRAME (SEE NOTE NO'S. 2 AND 3 BELOW).
6. HILTI CP 675T FIRESTOP BOARD INSERTED INTO OPENING AND PUSHED FLUSH WITH FRONT SURFACE OF WALL (SEE NOTE NO'S. 2 AND 3 BELOW).
7. CP 675 Z-FRAME LATCHES SECURED TO Z-FRAME AT EVERY OTHER LOCKING SPACE (MINIMUM TWO PER SIDE). TURN AND LOCK Z-FRAME LATCHES IN PLACE SO THEY EXTEND OVER THE FIRESTOP BOARD.
8. HILTI CP 619T FIRESTOP PUTTY ROLL CENTERED OVER SEAM BETWEEN FIRESTOP BOARD AND Z-FRAME, IN BETWEEN LATCHES (NOT SHOWN).

NOTES : 1. MAXIMUM SIZE OF OPENING = 24" x 36".
 2. FIRESTOP BOARDS SHALL BE CUT TO FIT INTERIOR OF OPENING. FIRESTOP BOARDS SHALL NOT BE MORE THAN 1/4" LESS IN WIDTH AND HEIGHT THAN OPENING SIZE.
 3. APPLY MINIMUM 1" DEPTH HILTI FIRESTOP PUTTY TO FILL GAPS AROUND FIRESTOP BOARDS EXCEEDING 1/8" IN WIDTH.



HILTI, Inc.
 Tulsa, Oklahoma USA (918) 252-6000

Sheet	1 of 1
Scale	1/16" = 1"
Date	March 22, 2004

Drawing No.

**WL
0015a**