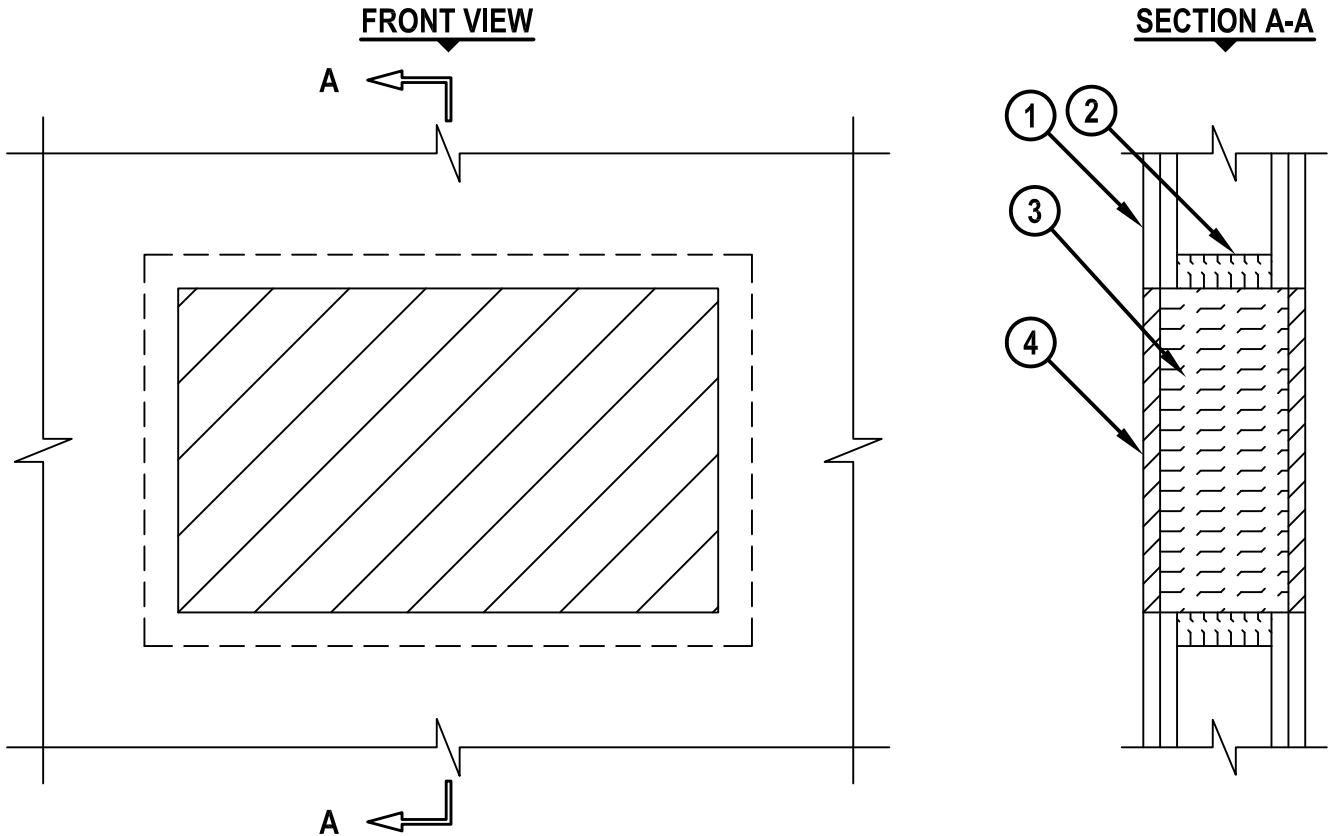


BLANK OPENING THROUGH GYPSUM WALL ASSEMBLY

F-RATING = 1-HR. OR 2-HR.

T-RATING = 1-HR. OR 2-HR.

WL0030b.011015



1. GYPSUM WALL ASSEMBLY (UL/cUL CLASSIFIED U300, U400 OR V400 SERIES) (1-HR. OR 2-HR. FIRE-RATING) (2-HR. SHOWN) TO INCLUDE THE FOLLOWING CONSTRUCTION FEATURES :
 - A. [NOT SHOWN] WOOD STUDS TO CONSIST OF NOMINAL 2" x 4" LUMBER (SPACED MAXIMUM 16" OC). STEEL STUDS TO BE MINIMUM 3-1/2" WIDE (SPACED MAXIMUM 24" OC).
 - B. NOMINAL 5/8" THICK GYPSUM WALLBOARD. TYPE, NUMBER OF LAYERS, AND SHEET ORIENTATION AS SPECIFIED IN THE INDIVIDUAL UL DESIGN.
2. MINIMUM 1-1/4" THICKNESS MINERAL WOOL (MIN. 4 PCF DENSITY) TIGHTLY PACKED AS A BACKER AROUND THE PERIMETER OF THE OPENING.
3. MINIMUM 3-1/2" OR 4-3/4" THICKNESS MINERAL WOOL (MIN. 4 PCF DENSITY) TIGHTLY PACKED FOR 1-HR. OR 2-HR. FIRE-RATING, RESPECTIVELY.
4. MINIMUM 5/8" DEPTH HILTI FS-ONE MAX OR FS-ONE INTUMESCENT FIRESTOP SEALANT.

NOTES : 1. WITH STEEL STUDS, MAXIMUM AREA OF SQUARE, RECTANGULAR, OR CIRCULAR OPENING IS 240 SQ. IN. WITH A MAXIMUM DIMENSION OF 20".
 2. WITH WOOD STUDS, MAXIMUM AREA OF SQUARE, RECTANGULAR, OR CIRCULAR OPENING IS 210 SQ. IN. WITH A MAXIMUM DIMENSION OF 14-1/2".



HILTI, Inc.
 Tulsa, Oklahoma USA (800) 879-8000

Sheet	1 of 1
Scale	9/64" = 1"
Date	Jan. 15, 2015

Drawing No.
WL
0030b