

METAL PIPE THROUGH A SLEEVE IN GYPSUM WALL ASSEMBLY

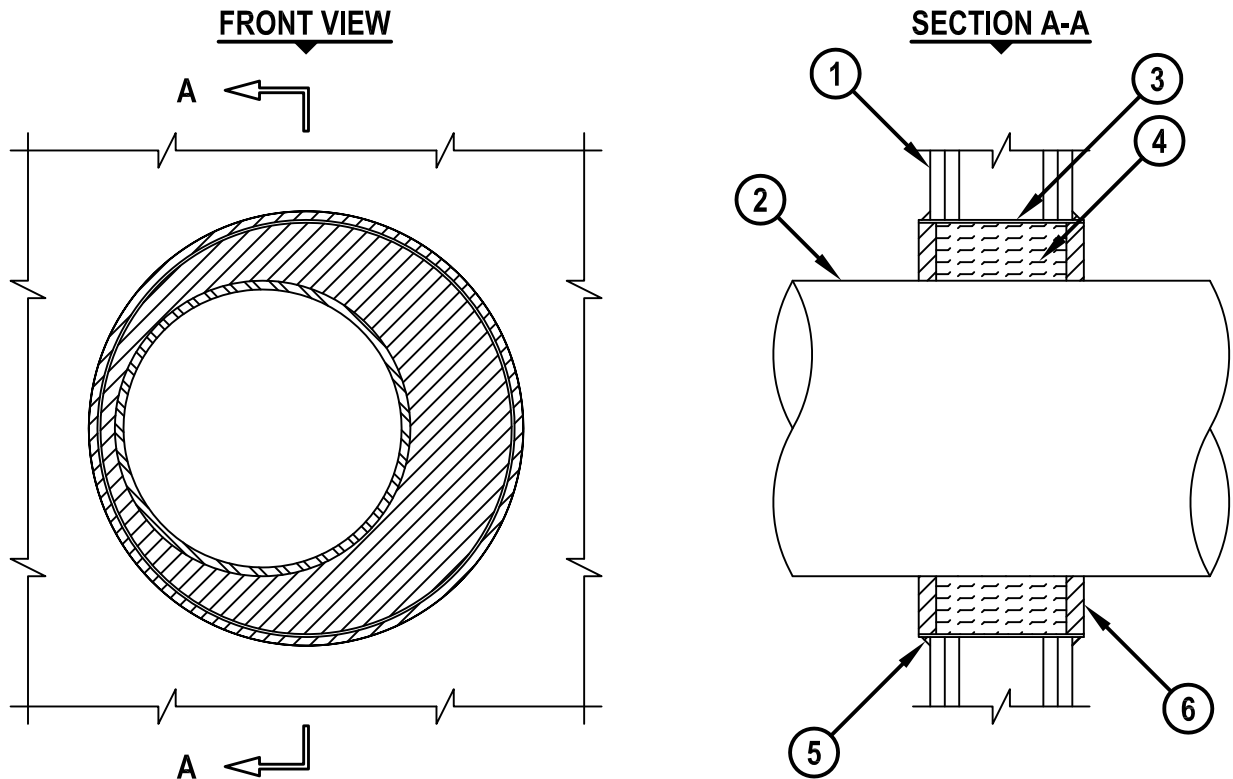
F RATING = 2-HR.

T RATING = 0-HR.

L RATING AT AMBIENT = LESS THAN 1 CFM / SQ FT

L RATING AT 400° F = 4 CFM / SQ FT

WL 1056f.011015



1. GYPSUM WALL ASSEMBLY (UL/cUL CLASSIFIED U300 OR U400 SERIES) (2-HR. FIRE-RATING).
2. PENETRATING ITEM TO BE ONE OF THE FOLLOWING :
 - A. MAXIMUM 12" NOMINAL DIAMETER STEEL PIPE (SCHEDULE 10 OR HEAVIER).
 - B. MAXIMUM 12" NOMINAL DIAMETER CAST IRON PIPE.
 - C. MAXIMUM 4" NOMINAL DIAMETER COPPER PIPE.
3. MINIMUM 24 GAUGE SHEET METAL SLEEVE EXTENDING 1/2" PAST EACH SURFACE OF WALL.
4. MINIMUM 4-1/2" THICKNESS MINERAL WOOL (MIN. 4 PCF DENSITY) TIGHTLY PACKED.
5. A GENEROUS BEAD OF HILTI FS-ONE MAX OR FS-ONE INTUMESCENT FIRESTOP SEALANT AROUND PERIMETER OF SLEEVE.
6. MINIMUM 3/4" DEPTH HILTI FS-ONE MAX OR FS-ONE INTUMESCENT FIRESTOP SEALANT.

NOTES : 1. MAXIMUM DIAMETER OF OPENING = 18-3/4".
 2. ANNULAR SPACE = MINIMUM 3/4", MAXIMUM 4-1/2".
 3. OPENING SHALL BE 1-1/2" TO 6" LARGER THAN OUTSIDE DIAMETER OF PIPE.



HILTI, Inc.
 Tulsa, Oklahoma USA (800) 879-8000

Sheet	1 of 1
Scale	1/8" = 1"
Date	Jan. 10, 2015

Drawing No.
WL 1056f