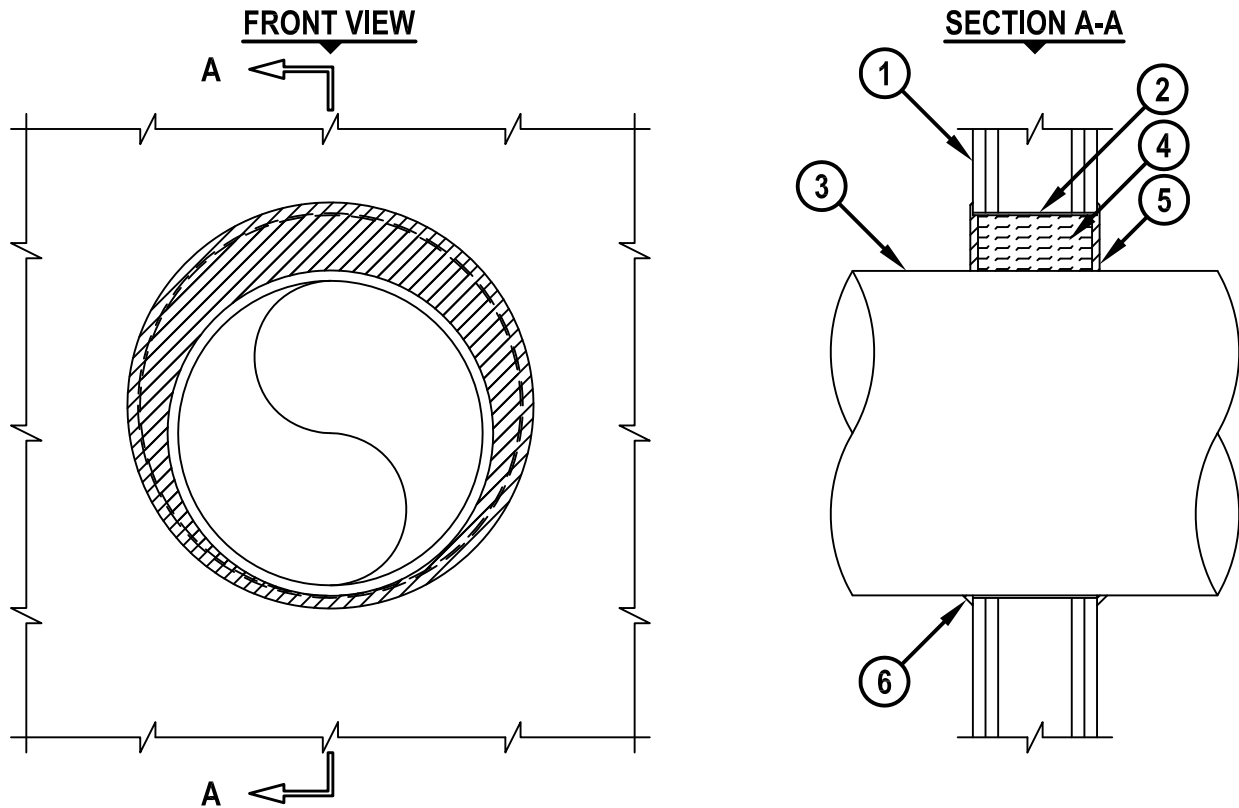


METAL PIPE IN A SLEEVE THROUGH GYPSUM WALL ASSEMBLY

F-RATING = 2-HR.

T-RATING = 0 AND 1/4-HR.

WL1058j.011015



1. GYPSUM WALL ASSEMBLY (UL/cUL CLASSIFIED U300 OR U400 SERIES) (2-HR FIRE-RATING).
2. NO. 8 STEEL WIRE MESH SLEEVE.
3. PENETRATING ITEM TO BE ONE OF THE FOLLOWING :
 - A. MAXIMUM 16" NOMINAL DIAMETER STEEL PIPE.
 - B. MAXIMUM 4" NOMINAL DIAMETER COPPER PIPE.
4. MINIMUM 4-1/2" THICKNESS MINERAL WOOL (MIN. 4 PCF DENSITY) TIGHTLY PACKED.
5. MINIMUM 1/4" DEPTH HILTI FS-ONE MAX OR FS-ONE INTUMESCENT FIRESTOP SEALANT.
6. MINIMUM 1/2" BEAD HILTI FS-ONE MAX OR FS-ONE INTUMESCENT FIRESTOP SEALANT APPLIED AT POINT OF CONTACT.

NOTES : 1. DIAMETER OF OPENING SHALL BE 3/8" TO 2-3/4" LARGER THAN THE DIAMETER OF THE PIPE.
 2. WHEN STEEL PIPE IS USED, ANNULAR SPACE = 0" TO 2-3/4", AND THE T-RATING = 1/4 HR.
 3. WHEN COPPER PIPE IS USED, ANNULAR SPACE = 0" TO 3", AND THE T-RATING = 0 HR.
 4. MAXIMUM DIAMETER OF OPENING IS 14-1/2" FOR WOOD STUD WALLS AND 20" FOR STEEL STUD WALLS.



HILTI, Inc.
 Tulsa, Oklahoma USA (800) 879-8000

Sheet	1 of 1
Scale	7/64" = 1"
Date	Jan. 10, 2015

Drawing No.
WL 1058j