

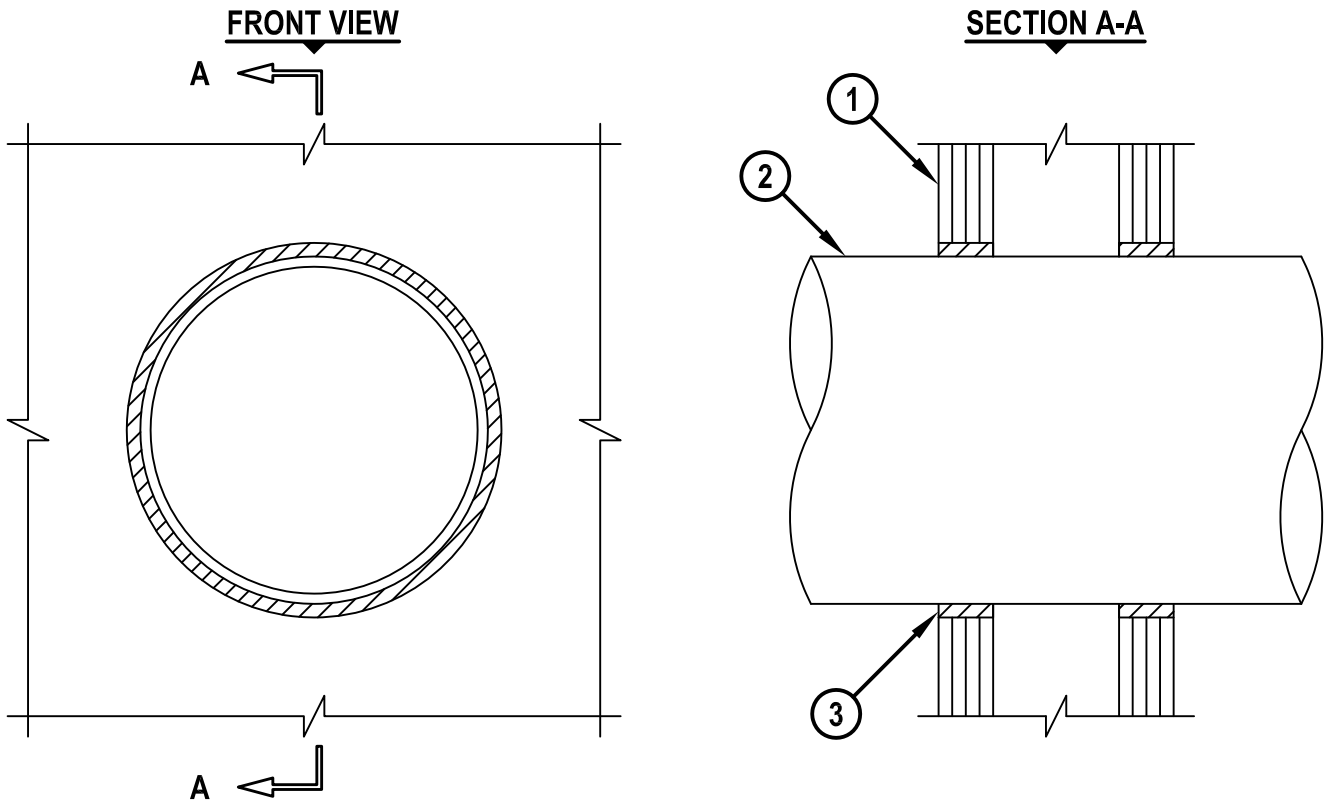
UL/cUL SYSTEM NO. W-L-1111

## METAL PIPE THROUGH GYPSUM WALL ASSEMBLY

F-RATING = 4-HR.

T-RATING = 0-HR.

WL1111c.011015



1. GYPSUM WALL ASSEMBLY (UL/cUL DESIGN NO. U435) (4-HR FIRE-RATING).
2. PENETRATING ITEM TO BE ANY ONE OF THE FOLLOWING :
  - A. MAXIMUM 12" NOMINAL DIAMETER STEEL PIPE (SCHEDULE 10 OR HEAVIER).
  - B. MAXIMUM 6" NOMINAL DIAMETER COPPER PIPE.
  - C. MAXIMUM 6" NOMINAL DIAMETER STEEL CONDUIT.
  - D. MAXIMUM 4" NOMINAL DIAMETER EMT.
3. MINIMUM 2" DEPTH HILTI FS-ONE MAX OR FS-ONE INTUMESCENT FIRESTOP SEALANT.

NOTES : 1. MAXIMUM DIAMETER OF OPENING = 13-5/8".  
2. ANNULAR SPACE = MINIMUM 3/8", MAXIMUM 1/2".



HILTI, Inc.  
Tulsa, Oklahoma USA (800) 879-8000

Sheet	1 of 1
Scale	3/16" = 1"
Date	Jan. 10, 2015

Drawing No.

**WL  
1111c**

*Saving Lives through Innovation and Education*