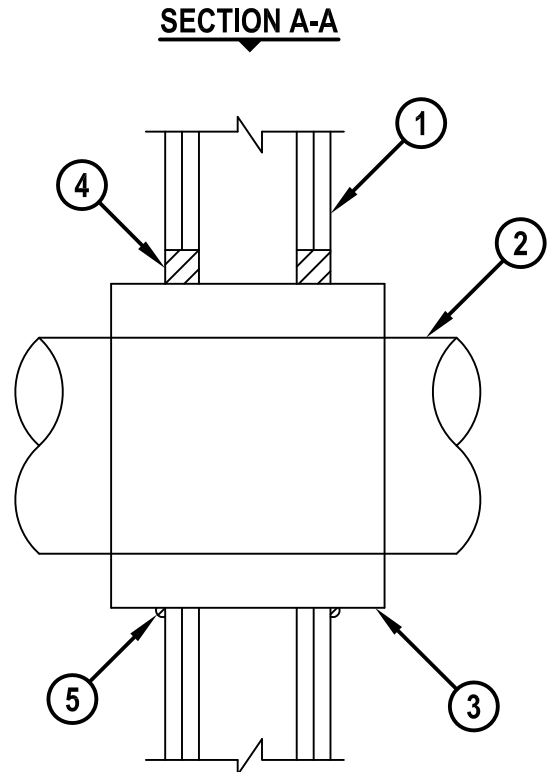
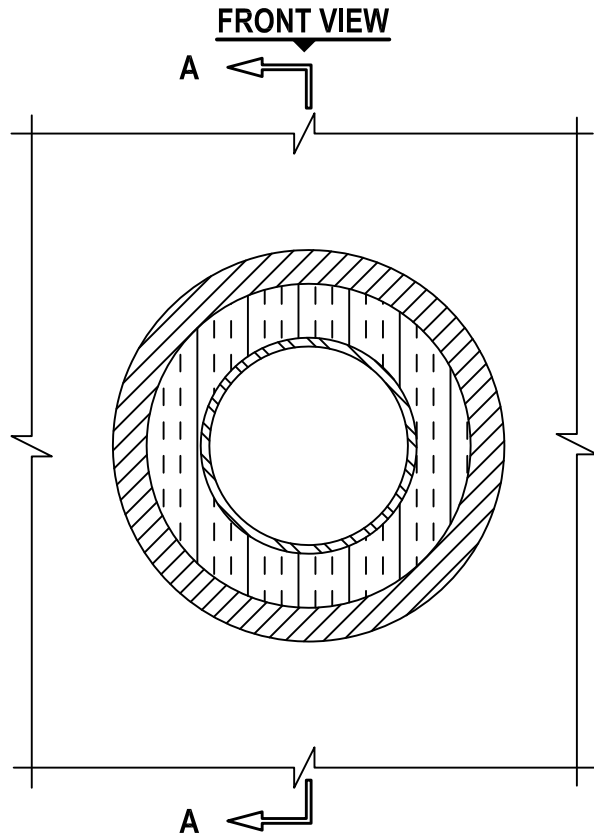


**METAL PIPE THROUGH 1-HR OR 2-HR GYPSUM WALL**

F-RATING = 1-HR. OR 2-HR

T-RATING = 0-HR.

WL1148e.011015



1. GYPSUM WALL ASSEMBLY (UL/cUL CLASSIFIED U300 OR U400) (1-HR. OR 2-HR. FIRE-RATING) (2-HR SHOWN).
2. PENETRATING ITEM TO BE ONE OF THE FOLLOWING :
  - A. MAXIMUM 8" NOMINAL DIAMETER STEEL PIPE (SCHEDULE 10 OR HEAVIER).
  - B. MAXIMUM 8" NOMINAL DIAMETER CAST IRON PIPE.
  - C. MAXIMUM 4" NOMINAL DIAMETER STEEL CONDUIT.
  - D. MAXIMUM 4" NOMINAL DIAMETER EMT.
3. NOMINAL 2" THICK GLASS-FIBER INSULATION (INSULATION TO EXTEND OUT 2" BEYOND WALL ON BOTH SIDES).
4. HILTI FS-ONE MAX OR FS-ONE INTUMESCENT FIRESTOP SEALANT :
  - A. MINIMUM 5/8" DEPTH, FOR A 1-HR. FIRE-RATING.
  - B. MINIMUM 1-1/4" DEPTH, FOR A 2-HR. FIRE-RATING.
5. MINIMUM 1/4" BEAD HILTI FS-ONE MAX OR FS-ONE INTUMESCENT FIRESTOP SEALANT APPLIED AT POINT OF CONTACT.

NOTES : 1. MAXIMUM DIAMETER OF OPENING = 13".  
 2. ANNULAR SPACE = MINIMUM 0", MAXIMUM 3/8".



HILTI, Inc.  
 Tulsa, Oklahoma USA (800) 879-8000

Sheet	1 of 1
Scale	9/64" = 1"
Date	Jan. 10, 2015

Drawing No.  
**WL 1148e**