

**METAL PIPE IN A SLEEVE THROUGH GYPSUM WALL ASSEMBLY**

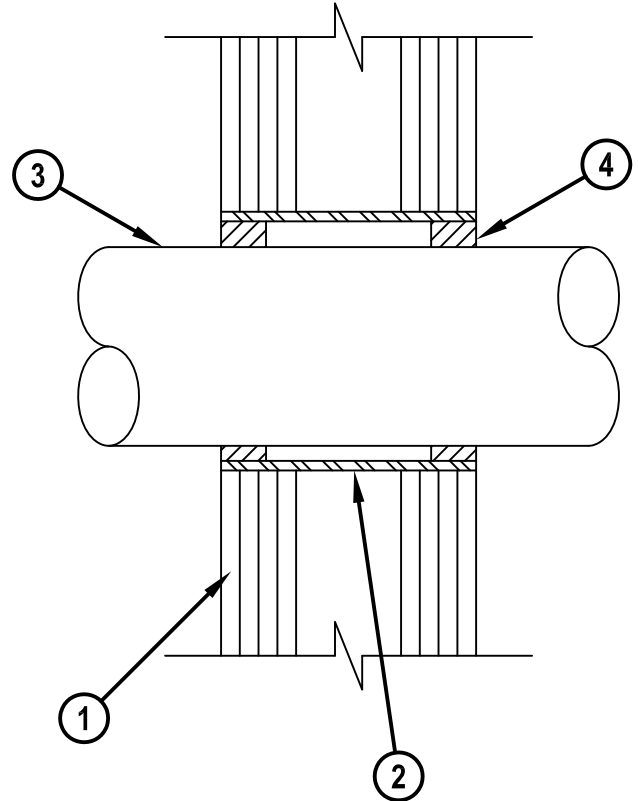
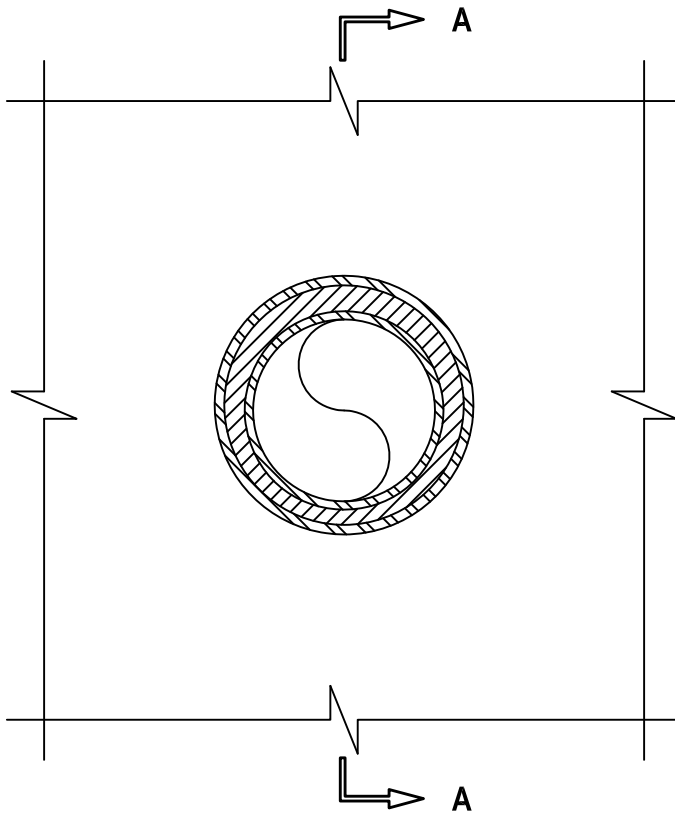
F-RATING = 4-HR.

T-RATING = 0-HR.

WL 1165c.011015

**FRONT VIEW**

**SECTION A-A**



1. GYPSUM WALL ASSEMBLY (UL/cUL CLASSIFIED U400 SERIES WALL) (4-HR. FIRE-RATING).
2. MAXIMUM 8" NOMINAL DIAMETER STEEL PIPE SLEEVE (SCHEDULE 40 OR HEAVIER).
3. PENETRATING ITEM TO BE ONE OF THE FOLLOWING :
  - A. MAXIMUM 6" NOMINAL DIAMETER STEEL PIPE (SCHEDULE 40 OR HEAVIER).
  - B. MAXIMUM 6" NOMINAL DIAMETER COPPER PIPE.
  - C. MAXIMUM 6" NOMINAL DIAMETER STEEL CONDUIT.
  - D. MAXIMUM 4" NOMINAL DIAMETER EMT.
4. MINIMUM 1-1/2" DEPTH HILTI FS-ONE MAX OR FS-ONE INTUMESCENT FIRESTOP SEALANT.

**NOTES :** 1. MAXIMUM DIAMETER OF OPENING = 8".  
 2. ANNULAR SPACE = MINIMUM 1/2", MAXIMUM 1-1/4".



HILTI, Inc.  
 Tulsa, Oklahoma USA (800) 879-8000

Sheet	1 of 1
Scale	5/32" = 1"
Date	Jan. 10, 2015

Drawing No.  
**WL 1165c**