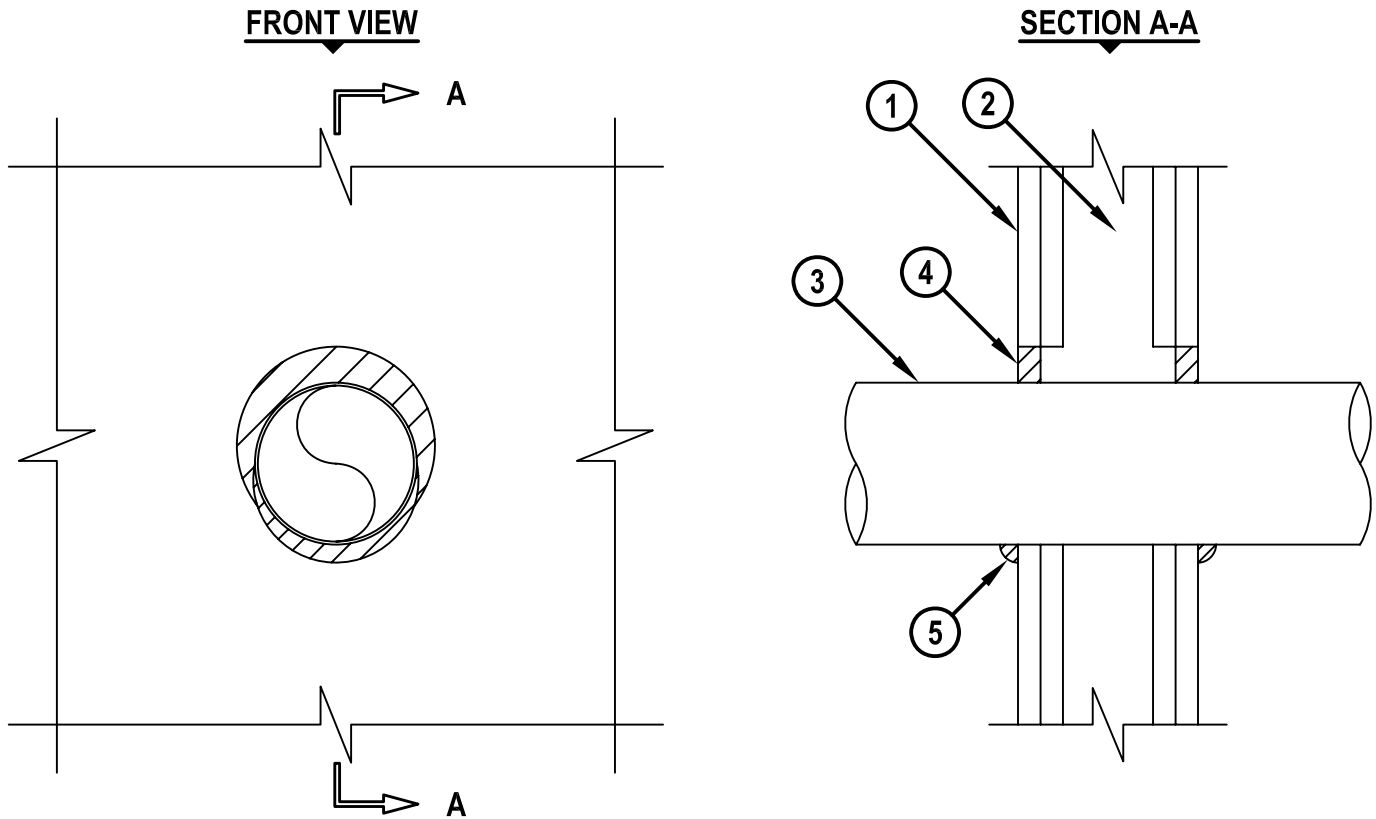


UL/cUL SYSTEM NO. W-L-1175
METAL PIPE THROUGH GYPSUM WALL ASSEMBLY

F-RATING = 1-HR. OR 2-HR.
 T-RATING = 0-HR.
 L-RATING AT AMBIENT = 1 CFM/SQ. FT.
 L-RATING AT 400°F = 1 CFM/SQ. FT.

WL1175b.032206



1. GYPSUM WALL ASSEMBLY (UL/cUL CLASSIFIED U300 OR U400 SERIES) (1-HR. OR 2-HR. FIRE-RATING) (2-HR. SHOWN).
2. [NOT SHOWN] WOOD STUDS TO CONSIST OF NOMINAL 2" x 4" LUMBER. STEEL STUDS TO BE MINIMUM 2-1/2" WIDE.
3. PENETRATING ITEM TO BE ONE OF THE FOLLOWING :
 - A. MAXIMUM 4" NOMINAL DIAMETER EMT.
 - B. MAXIMUM 4" NOMINAL DIAMETER STEEL CONDUIT.
4. MINIMUM 5/8" DEPTH HILTI CP 618 FIRESTOP PUTTY STICK.
5. MINIMUM 1/4" CROWN HILTI CP 618 FIRESTOP PUTTY STICK AT POINT OF CONTACT.

NOTES : 1. MAXIMUM DIAMETER OF OPENING = 5-1/2".
 2. ANNULAR SPACE = MINIMUM 0", MAXIMUM 1".



HILTI, Inc.
 Tulsa, Oklahoma USA (918) 252-6000

Sheet	1 of 1
Scale	3/16" = 1"
Date	Mar. 22, 2006

Drawing No.
WL 1175b