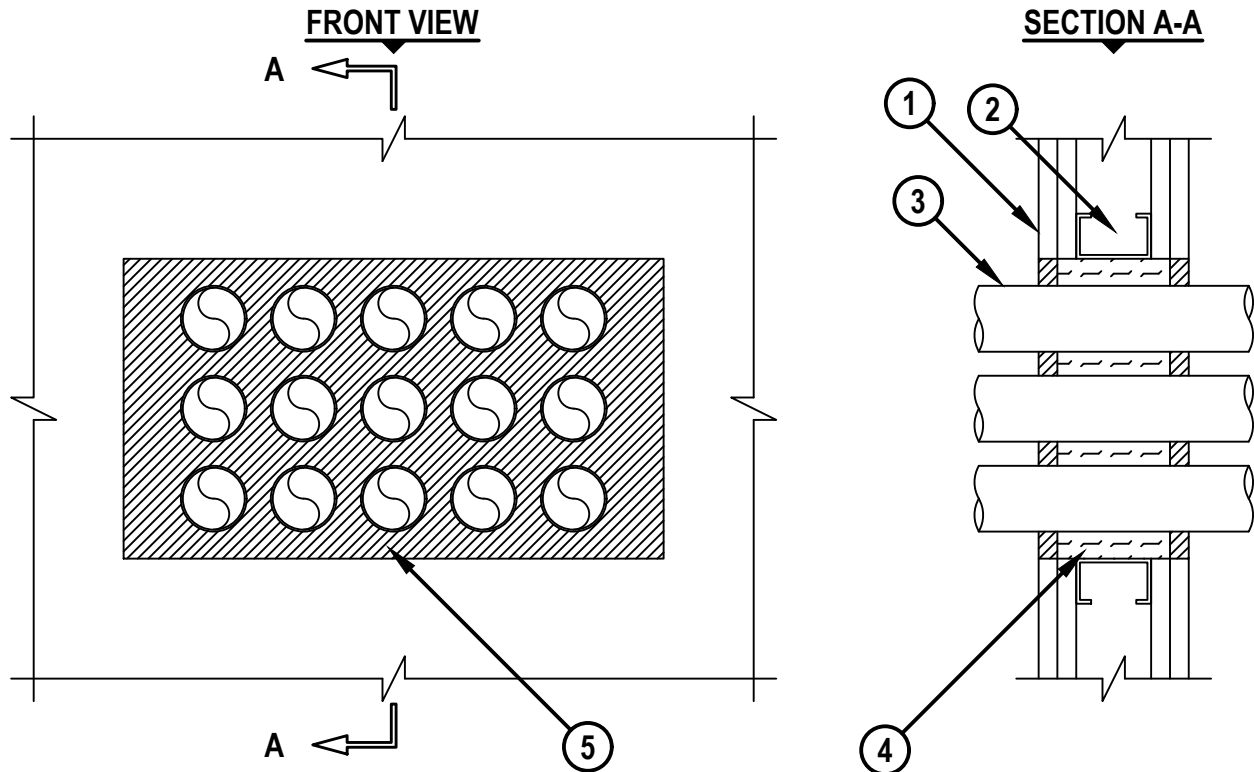


MULTIPLE METAL PIPES THROUGH GYPSUM WALL ASSEMBLY

F-RATING = 1-HR. OR 2-HR.

T-RATING = 1/2-HR.

WL1176g.041717



1. GYPSUM WALL ASSEMBLY (UL/cUL CLASSIFIED U300 OR U400 SERIES) (1-HR. OR 2-HR. FIRE-RATING) (2-HR. SHOWN).
2. WOOD STUDS TO CONSIST OF NOMINAL 2" x 4" LUMBER. STEEL STUDS TO BE MINIMUM 2-1/2" WIDE. OPENING TO BE "FRAMED-OUT".
3. ONE OR MORE MAXIMUM 2" NOMINAL DIAMETER STEEL CONDUIT OR EMT.
4. MINIMUM 2-1/2" OR 3-3/4" THICKNESS MINERAL WOOL (MIN. 4 PCF DENSITY) TIGHTLY PACKED FOR 1-HR. OR 2-HR. FIRE-RATING, RESPECTIVELY.
5. MINIMUM 5/8" DEPTH HILTI FS-ONE MAX INTUMESCENT FIRESTOP SEALANT.

NOTES : 1. MAXIMUM SIZE OF OPENING = 18" x 10". MAXIMUM WIDTH OF OPENING IN WOOD STUD WALLS IS LIMITED TO 14-1/2".
 2. ANNULAR SPACE BETWEEN PIPES AND PERIPHERY OF OPENING = MINIMUM 1/2", MAXIMUM 2-3/8".
 3. ANNULAR SPACE BETWEEN PIPES = MINIMUM 1/2", MAXIMUM 5/8".



HILTI, Inc.
 Plano, Texas USA (800) 879-8000

Sheet	1 of 1
Scale	5/32" = 1"
Date	Apr. 17, 2017

Drawing No.
WL 1176g