

UL/cUL SYSTEM NO. W-L-1243

FLEXIBLE ALUMINUM CONDUIT THROUGH GYPSUM WALL ASSEMBLY

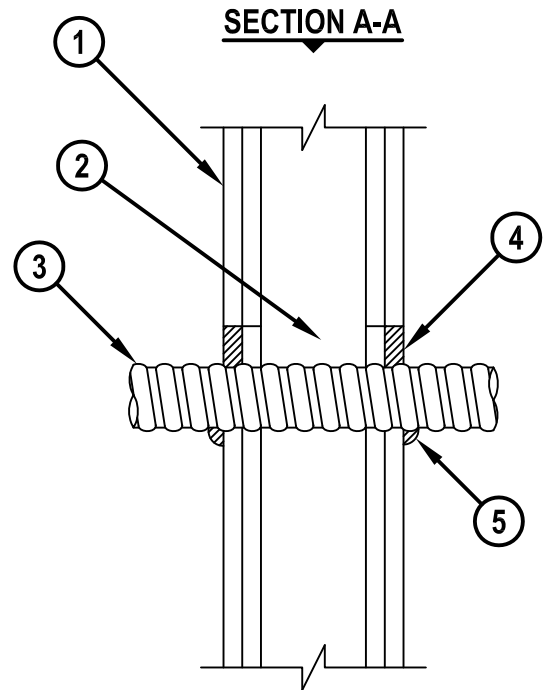
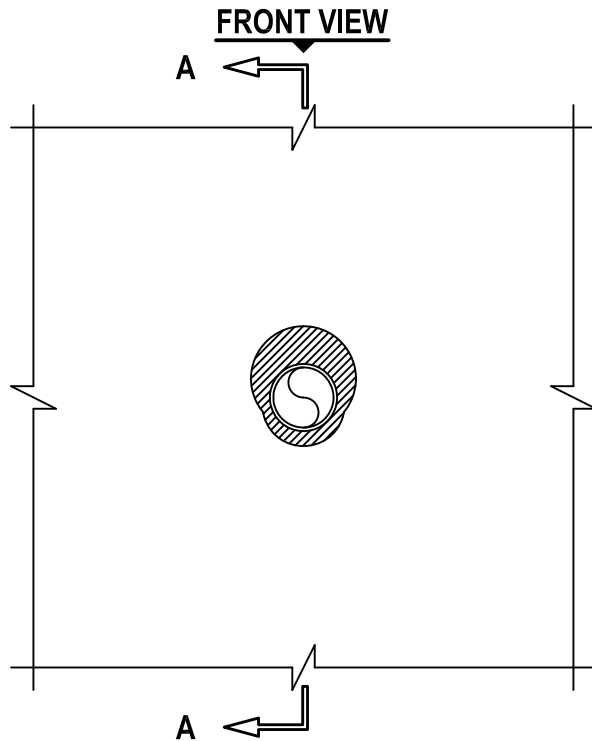
F-RATING = 1-HR. OR 2-HR.

T-RATING = 0-HR.

L-RATING AT AMBIENT = 5 CFM / SQ FT

L-RATING AT 400°F = 1 CFM / SQ FT

WL1243e.011215



1. GYPSUM WALL ASSEMBLY (UL/cUL CLASSIFIED U300 OR U400 SERIES) (1-HR. OR 2-HR. FIRE-RATING) (2-HR. SHOWN).
2. [NOT SHOWN] WOOD STUDS TO CONSIST OF NOMINAL 2" x 4" LUMBER. STEEL STUDS TO BE MINIMUM 2-1/2" WIDE.
3. PENETRATING ITEM TO BE ONE OF THE FOLLOWING :
 - A. MAXIMUM 2" NOMINAL DIAMETER FLEXIBLE ALUMINUM OR STEEL CONDUIT.
 - B. MAXIMUM 2" NOMINAL DIAMETER FLEXIBLE STEEL GAS PIPING MANUFACTURED BY OMEGA FLEX INC.
 - C. MAXIMUM 1" NOMINAL DIAMETER FLEXIBLE STEEL GAS PIPING MANUFACTURED BY GASTITE, DIVISION OF TITFLEX OR WARD MFG. LLC.
4. MINIMUM 5/8" DEPTH HILTI FS-ONE MAX OR FS-ONE INTUMESCENT FIRESTOP SEALANT.
5. MINIMUM 1/2" BEAD HILTI FS-ONE MAX OR FS-ONE INTUMESCENT FIRESTOP SEALANT APPLIED AT POINT OF CONTACT.

NOTES : 1. MAXIMUM DIAMETER OF OPENING = 3-1/2".
2. ANNULAR SPACE = MINIMUM 0", MAXIMUM 1".



HILTI, Inc.
Tulsa, Oklahoma USA (800) 879-8000

Sheet	1 of 1
Scale	5/32" = 1"
Date	Jan. 12, 2015

Drawing No.
WL
1243e

Saving Lives through Innovation and Education