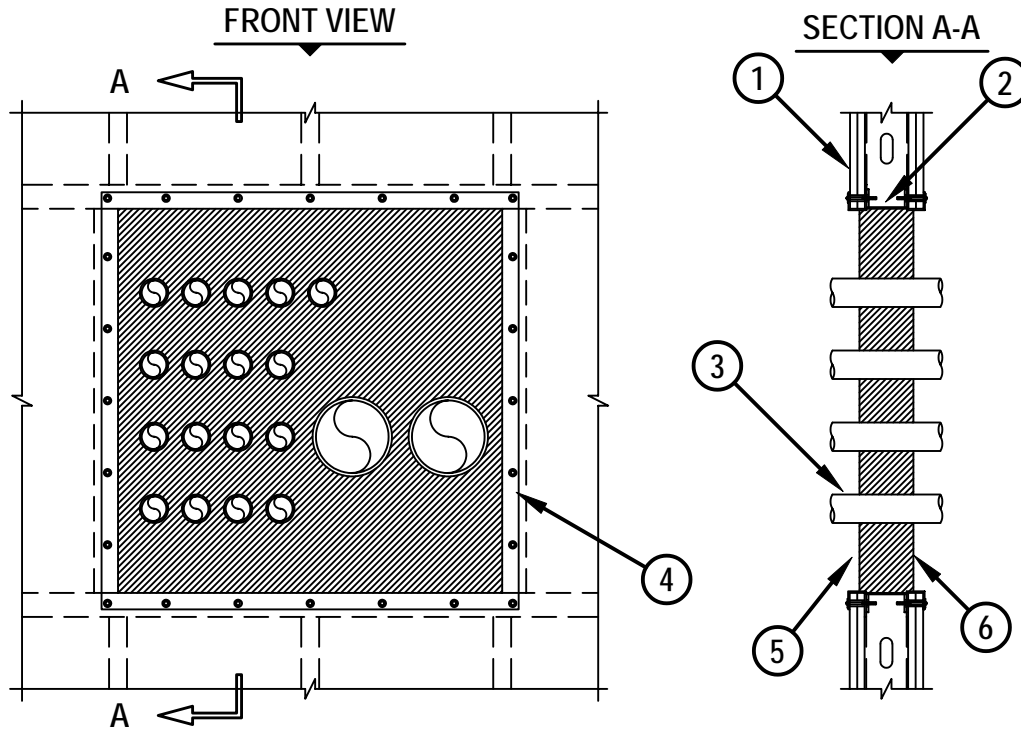


**MULTIPLE METAL PIPES THROUGH 2-HR. GYPSUM WALL ASSEMBLY**

F-RATING = 2-HR.

T-RATING = 0-HR.

WL1247a.053101



1. GYPSUM WALL ASSEMBLY (UL CLASSIFIED U300 OR U400 SERIES) (2-HR. FIRE-RATING).
2. (NOT SHOWN). WOOD STUDS TO CONSIST OF NOMINAL 2" x 4" LUMBER, STEEL STUDS TO BE MINIMUM 2-1/2" WIDE. OPENING TO BE "FRAMED OUT".
3. PENETRATING ITEMS TO BE A COMBINATION OF ANY OF THE FOLLOWING :
  - A. MAXIMUM 6" NOMINAL DIAMETER STEEL PIPE (SCHEDULE 10 OR HEAVIER).
  - B. MAXIMUM 6" NOMINAL DIAMETER CAST IRON PIPE.
  - C. MAXIMUM 3" NOMINAL DIAMETER COPPER PIPE.
  - D. MAXIMUM 6" NOMINAL DIAMETER STEEL CONDUIT.
  - E. MAXIMUM 4" NOMINAL DIAMETER EMT.
4. STEEL ANGLES (SEE NOTE NO. 3 BELOW).
5. FORMING NOT SHOWN. USE A RIGID BOARD MATERIAL TO SUPPORT HILTI CP 637 FIRESTOP MORTAR DURING ITS INITIAL CURE.
6. MINIMUM 4-1/2" DEPTH OF HILTI CP 637 FIRESTOP MORTAR.

NOTES : 1. MAXIMUM SIZE OF OPENING = 1024 SQ. IN. WITH A MAXIMUM DIMENSION OF 32" FOR STEEL STUD WALLS, AND A MAXIMUM 14-1/2" FOR WOOD STUD WALLS.  
 2. ANNULAR SPACE FOR PIPES 1-1/2" NOMINAL DIAMETER OR SMALLER = MINIMUM 1". ANNULAR SPACE FOR PIPES LARGER THAN 1-1/2" NOM. DIA. = MINIMUM 2-1/2".  
 3. NOM. 1-1/2" x 1-1/2" x MINIMUM 22 GA. STEEL ANGLES ATTACHED TO ALL FOUR SIDES OF OPENING, AND BOTH SIDES OF WALL ASSEMBLY, WITH MINIMUM 1-5/8" STEEL SCREWS SPACED MAX. 2" FROM EACH END AND AT A MAX. OF 5" OC.



HILTI, Inc.  
 Tulsa, Oklahoma USA (918) 252-6000

Sheet	1 of 1
Scale	1/16" = 1"
Date	May 31, 2001

Drawing No.  
**WL**  
**1247a**