

METAL PIPE THROUGH GYPSUM WALL ASSEMBLY

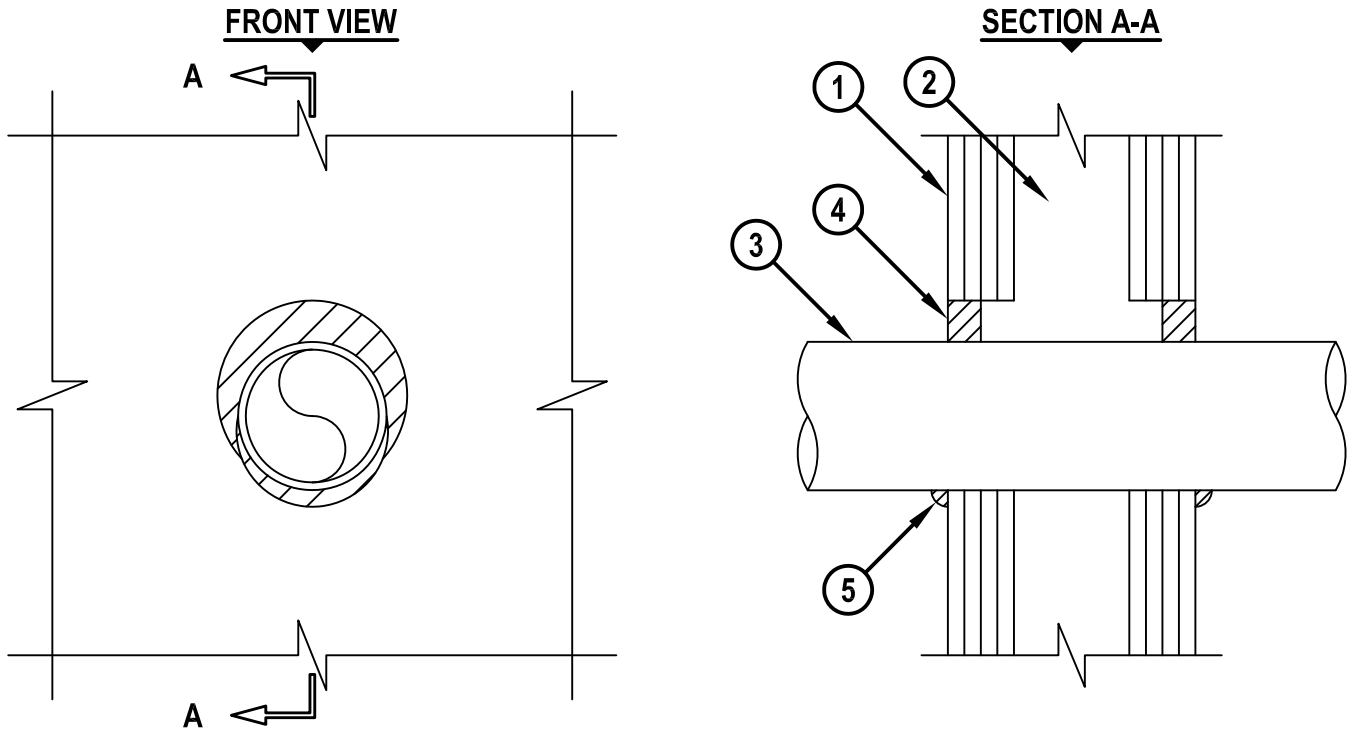
F-RATING = 1-HR., 2-HR., 3-HR., OR 4-HR.

T-RATING = 0-HR.

L-RATING AT AMBIENT = LESS THAN 1 CFM / SQ FT

L-RATING AT 400° F = LESS THAN 1 CFM / SQ FT

WL1252d.011215



1. GYPSUM WALL ASSEMBLY (UL/cUL CLASSIFIED U400, V400, OR W400 SERIES) (1-HR., 2-HR., 3-HR., OR 4-HR. FIRE-RATING) (4-HR. SHOWN).
2. STEEL STUDS TO BE MINIMUM 3-1/2" (SPACED MAXIMUM 24" OC).
3. PENETRATING ITEM TO BE ONE OF THE FOLLOWING :
 - A. MAXIMUM 4" NOMINAL DIAMETER STEEL PIPE (SCHEDULE 10 OR HEAVIER).
 - B. MAXIMUM 4" NOMINAL DIAMETER CAST IRON PIPE.
 - C. MAXIMUM 4" NOMINAL DIAMETER COPPER PIPE.
 - D. MAXIMUM 4" NOMINAL DIAMETER STEEL CONDUIT OR EMT.
4. HILTI FIRESTOP SEALANT APPLIED PER TABLE BELOW.
5. MINIMUM 1/2" HILTI BEAD OF FIRESTOP SEALANT APPLIED AT POINT OF CONTACT.

F RATING HR.	SEALANT TYPE	SEALANT THICKNESS, IN.
1, 2	FS-ONE MAX OR FS-ONE OR CP 606	5/8
3	FS-ONE MAX OR FS-ONE OR CP 606	1
4	FS-ONE MAX OR FS-ONE	1

**NOTES : 1. MAXIMUM DIAMETER OF OPENING = 5-3/4".
2. ANNULAR SPACE = MINIMUM 0", MAXIMUM 7/8".**



HILTI, Inc.
Tulsa, Oklahoma USA (800) 879-8000

Sheet	1 of 1
Scale	11/64" = 1"
Date	Jan. 12, 2015

Drawing No.
**WL
1252d**