

**MULTIPLE METALLIC PIPES THROUGH GYPSUM WALL ASSEMBLY**

F-RATING = 1-HR. OR 2-HR.

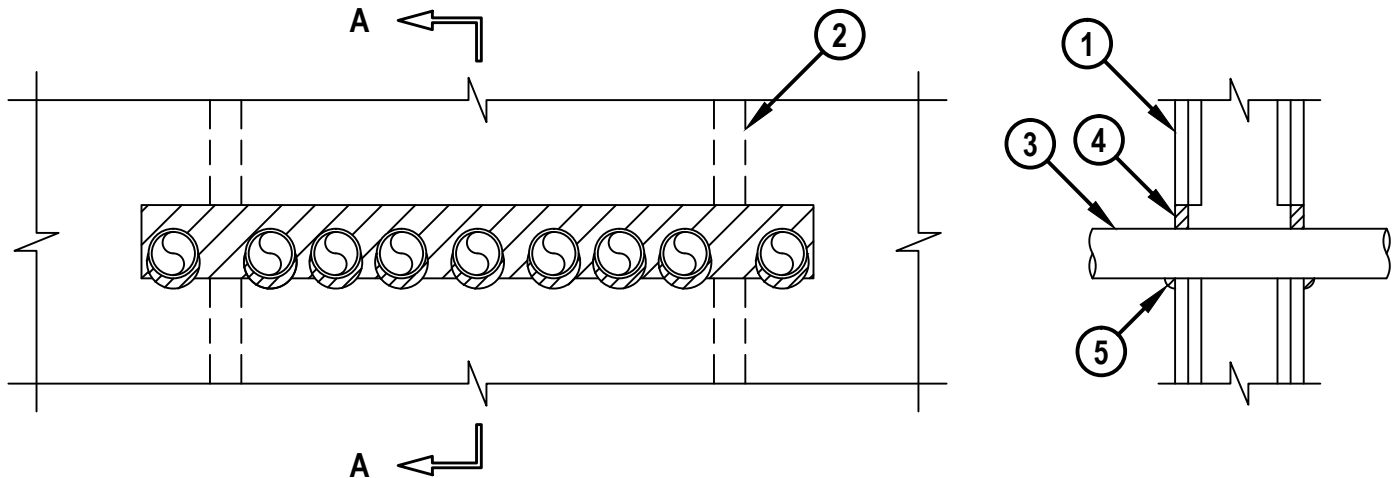
T-RATING = 0-HR.

L-RATING AT AMBIENT = LESS THAN 1 CFM / SQ FT

L-RATING AT 400°F = 4 CFM / SQ FT

**FRONT VIEW**

**SECTION A-A**



WL1389d.013018

1. GYPSUM WALL ASSEMBLY (UL/cUL CLASSIFIED U400 OR V400 SERIES) (1-HR. OR 2-HR. FIRE-RATING) (2-HR. SHOWN).
2. STEEL STUDS TO BE MINIMUM 3-5/8" WIDE.
3. ANY COMBINATION OF THE FOLLOWING PIPES MAY BE INSTALLED IN A SINGLE ROW :
  - A. MAXIMUM 2" NOMINAL DIAMETER STEEL PIPE (SCHEDULE 5 OR HEAVIER).
  - B. MAXIMUM 2" NOMINAL DIAMETER STEEL CONDUIT.
  - C. MAXIMUM 2" NOMINAL DIAMETER EMT.
4. MINIMUM 5/8" DEPTH HILTI FS-ONE MAX INTUMESCENT FIRESTOP SEALANT (SEE NOTE NO. 4 BELOW).
5. MINIMUM 1/2" BEAD HILTI FS-ONE MAX INTUMESCENT FIRESTOP SEALANT APPLIED AT POINT OF CONTACT (SEE NOTE NO. 4 BELOW).

**NOTES :** 1. MAXIMUM SIZE OF OPENING = 32" x 3-1/2".  
 2. ANNULAR SPACE BETWEEN PIPES AND PERIPHERY OF OPENING = MINIMUM 0", MAXIMUM 1-3/8".  
 3. ANNULAR SPACE BETWEEN PIPES = MINIMUM 0", MAXIMUM 1-1/4".  
 4. AS AN ALTERNATE TO FS-ONE MAX ON 1-HR. RATED WALLS ONLY, HILTI CP 606 FLEXIBLE FIRESTOP SEALANT MAY BE USED.  
 5. FOR L-RATINGS TO APPLY, ANNULAR SPACE BETWEEN PIPES = MINIMUM 1/2", MAXIMUM 1-1/4".



HILTI, Inc.  
 Plano, Texas USA (800) 879-8000

Sheet	1 of 1
Scale	7/64" = 1"
Date	Jan. 30, 2018

Drawing No.  
**WL**  
**1389d**