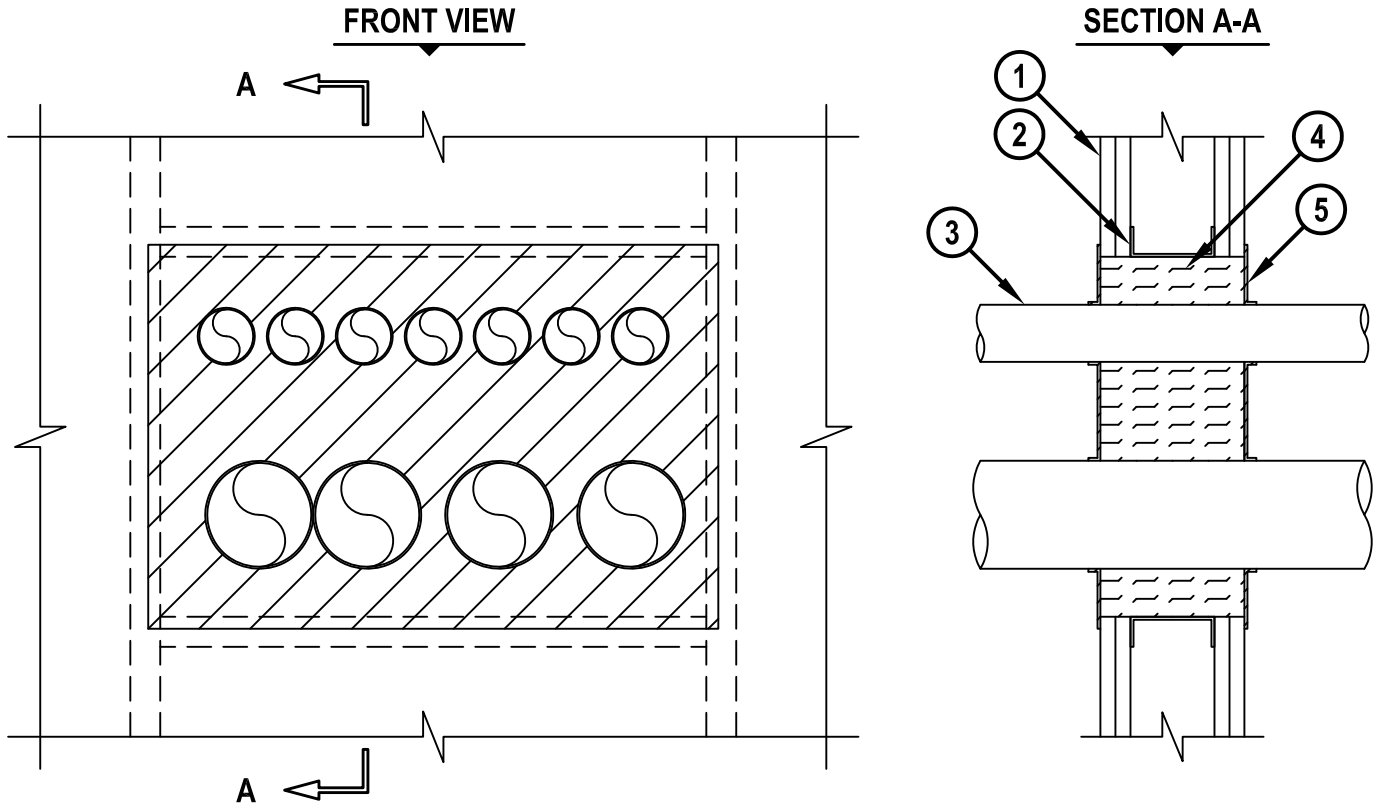


**MULTIPLE METAL PIPES THROUGH GYPSUM WALL ASSEMBLY**

F-RATING = 1-HR. OR 2-HR.

T-RATING = 1/4-HR.

WL 1402b.062910



1. GYPSUM WALL ASSEMBLY (UL/cUL CLASSIFIED U400 SERIES) (1-HR. OR 2-HR. FIRE-RATING) (2-HR. SHOWN).
2. STEEL STUDS TO BE MINIMUM 3-1/2" WIDE. OPENING TO BE COMPLETELY "FRAMED OUT".
3. ONE OR MORE OF THE FOLLOWING PENETRANTS :
  - A. MAXIMUM 4" NOMINAL DIAMETER STEEL PIPE (SCHEDULE 5 OR HEAVIER).
  - B. MAXIMUM 4" NOMINAL DIAMETER CAST OR DUCTILE IRON PIPE.
  - C. MAXIMUM 4" NOMINAL DIAMETER STEEL CONDUIT OR EMT.
4. MINERAL WOOL (MIN. 4 PCF DENSITY) CUT INTO STRIPS EQUAL TO THICKNESS OF WALL AND TIGHTLY COMPRESSED TO FILL OPENING.
5. MINIMUM 1/8" (WET) THICKNESS HILTI CFS-SP WB FIRESTOP JOINT SPRAY OR HILTI CP 672 SPEED SPRAY TO COMPLETELY COVER MINERAL WOOL, OVERLAPPING MINIMUM 1/2" ONTO PENETRANT(S) AND GYPSUM WALL.

NOTES : 1. MAXIMUM SIZE OF OPENING = 22-3/4" x 15".  
 2. ANNULAR SPACE BETWEEN PENETRANTS AND PERIPHERY OF OPENING = MINIMUM 0", MAXIMUM 1-3/4".  
 3. ANNULAR SPACE BETWEEN PENETRANTS = MINIMUM 1/4", MAXIMUM 5-1/2".



HILTI, Inc.  
 Tulsa, Oklahoma USA (800) 879-8000

Sheet	1 of 1
Scale	1/8" = 1"
Date	June 29, 2010

Drawing No.  
**WL 1402b**