

MULTIPLE METALLIC PIPES THROUGH GYPSUM WALL ASSEMBLY

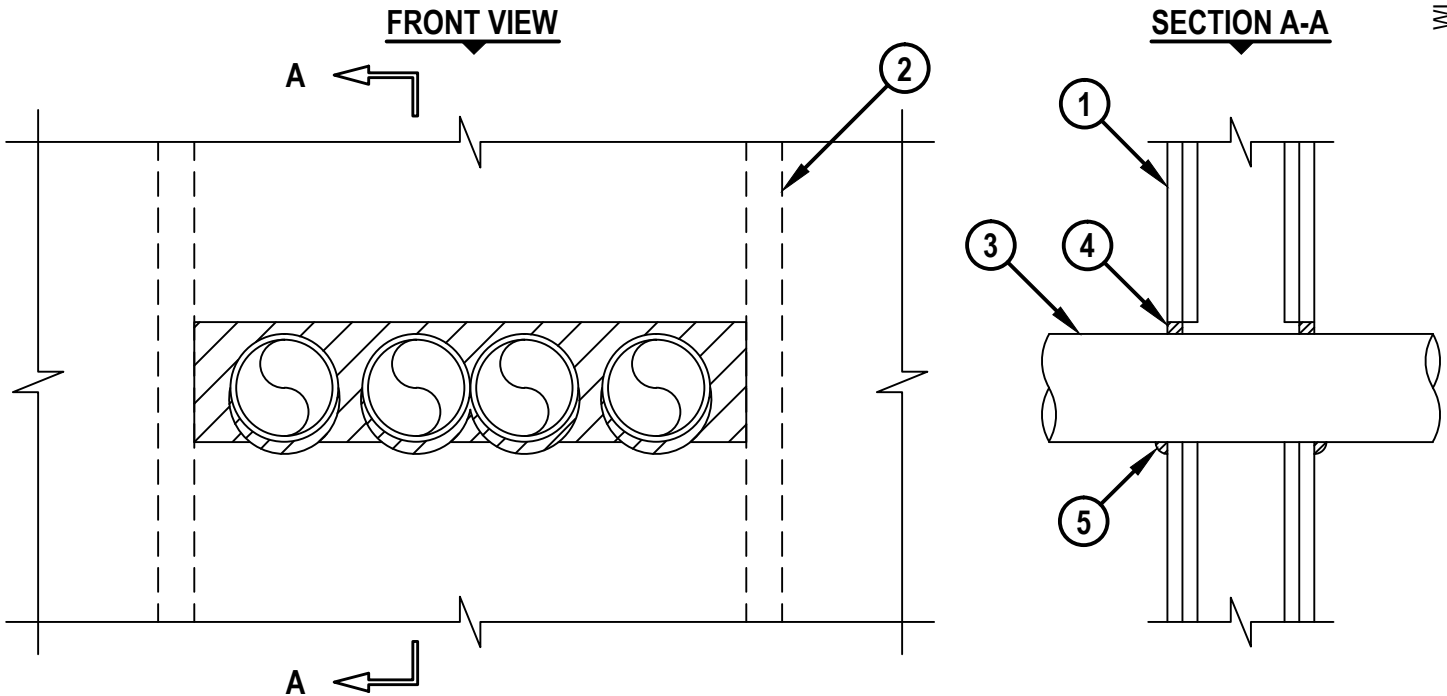
F-RATING = 1-HR. OR 2-HR.

T-RATING = 0-HR. OR 1/4-HR.

L-RATING AT AMBIENT = LESS THAN 1 CFM / SQ FT

L-RATING AT 400°F = 4 CFM / SQ FT

WL1408c.013018



1. GYPSUM WALL ASSEMBLY (UL/cUL CLASSIFIED U400 OR V400 SERIES) (1-HR. OR 2-HR. FIRE-RATING) (2-HR. SHOWN).
2. STEEL STUDS TO BE MINIMUM 3-5/8" WIDE.
3. ONE OR MORE OF THE FOLLOWING PENETRATING ITEMS TO BE INSTALLED IN A SINGLE ROW :
 - A. MAXIMUM 4" NOMINAL DIAMETER STEEL PIPE (SCHEDULE 5 OR HEAVIER).
 - B. MAXIMUM 4" NOMINAL DIAMETER STEEL CONDUIT.
 - C. MAXIMUM 4" NOMINAL DIAMETER EMT.
4. MINIMUM 5/8" DEPTH HILTI FS-ONE MAX INTUMESCENT FIRESTOP SEALANT.
5. MINIMUM 1/2" BEAD HILTI FS-ONE MAX INTUMESCENT FIRESTOP SEALANT APPLIED AT POINT OF CONTACT.

NOTES : 1. MAXIMUM SIZE OF OPENING = 23" x 5".
 2. ANNULAR SPACE BETWEEN PENETRANTS AND PERIPHERY OF OPENING = MINIMUM 0", MAXIMUM 1".
 3. ANNULAR SPACE BETWEEN PENETRANTS = MINIMUM 0", MAXIMUM 1-1/2".
 4. FOR L-RATINGS TO APPLY, ANNULAR SPACE BETWEEN PENETRANTS = MINIMUM 1/2", MAXIMUM 1-1/4".



HILTI, Inc.
 Plano, Texas USA (800) 879-8000

Sheet	1 of 1
Scale	1/8" = 1"
Date	Jan. 30, 2018

Drawing No.
**WL
 1408c**