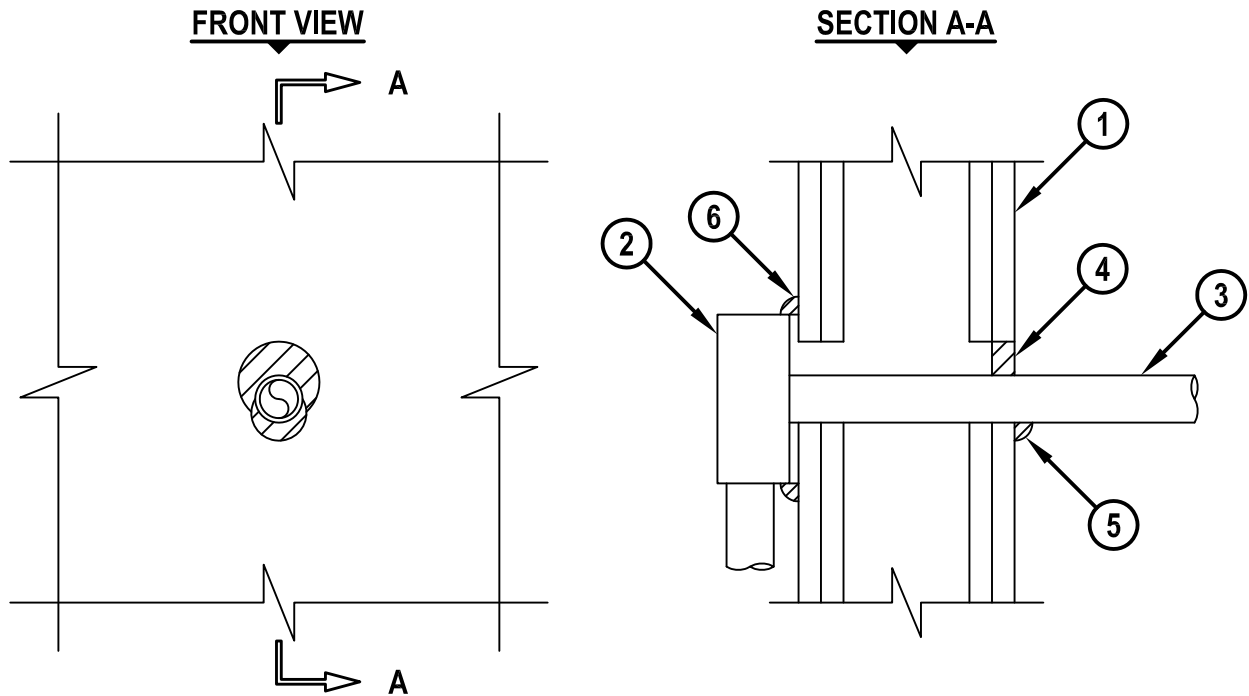


UL/cUL SYSTEM NO. W-L-1440
METAL PIPE THROUGH GYPSUM WALL ASSEMBLY

F-RATING = 1-HR. OR 2-HR.
 T-RATING = 0-HR.

WL1440b.011215



1. GYPSUM WALL ASSEMBLY (UL/cUL CLASSIFIED U300 OR U400 SERIES) (1-HR. OR 2-HR. FIRE-RATING) (2-HR. SHOWN) TO INCLUDE THE FOLLOWING CONSTRUCTION FEATURES :
 - A. [NOT SHOWN] WOOD STUDS TO CONSIST OF NOMINAL 2" x 4" LUMBER (SPACED MAXIMUM 16" OC). STEEL STUDS TO BE MINIMUM 3-1/2" WIDE (SPACED MAXIMUM 24" OC).
 - B. NOMINAL 5/8" THICK GYPSUM WALLBOARD. TYPE, NUMBER OF LAYERS, AND SHEET ORIENTATION AS SPECIFIED IN THE INDIVIDUAL UL DESIGN.
2. STEEL PULL OR JUNCTION BOX (MIN. 16 GA.) MOUNTED FLUSH OR MAXIMUM 1/4" FROM WALL SURFACE.
3. MAXIMUM 1" NOMINAL DIAMETER STEEL CONDUIT OR EMT.
4. MINIMUM 5/8" DEPTH HILTI FS-ONE MAX OR FS-ONE INTUMESCENT FIRESTOP SEALANT.
5. MINIMUM 1/2" BEAD HILTI FS-ONE MAX OR FS-ONE INTUMESCENT FIRESTOP SEALANT APPLIED AT POINT OF CONTACT.
6. MINIMUM 1/2" BEAD HILTI FS-ONE MAX OR FS-ONE INTUMESCENT FIRESTOP SEALANT APPLIED AROUND ENTIRE PERIMETER OF PULL OR JUNCTION BOX, OVERLAPPING MINIMUM 1/2" ONTO WALL AND PULL OR JUNCTION BOX.

NOTES : 1. DIAMETER OF OPENING TO BE MINIMUM 1/2" LARGER THAN OUTSIDE DIAMETER OF PENETRANT, WITH A MAXIMUM DIAMETER OF 2-1/4".
 2. ANNULAR SPACE = MINIMUM 0", MAXIMUM 1-1/8".



HILTI, Inc.
 Tulsa, Oklahoma USA (800) 879-8000

Sheet	1 of 1
Scale	3/16" = 1"
Date	Jan. 12, 2015

Drawing No.
WL 1440b