

**MEDICAL GAS OUTLETS THROUGH GYPSUM WALL ASSEMBLY**

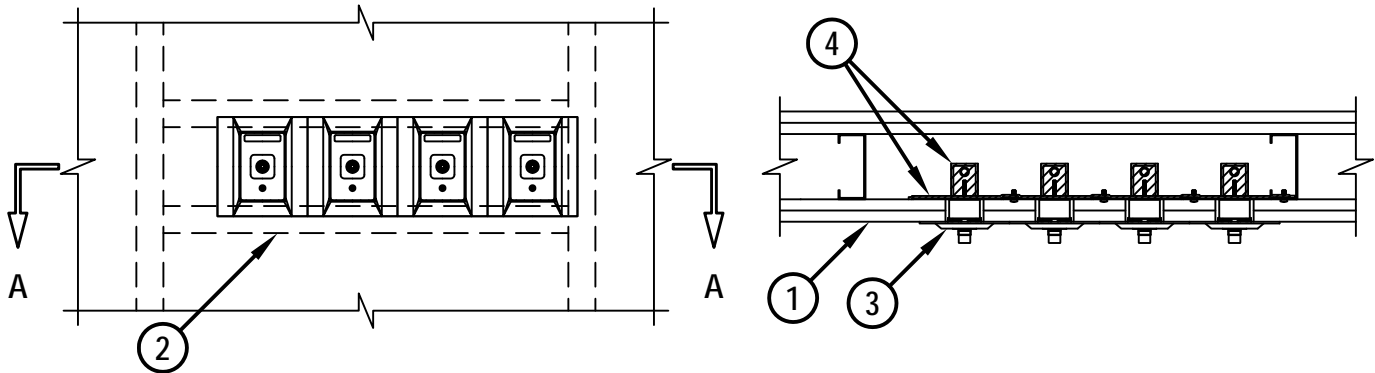
F-RATING = 1-HR. OR 2-HR.

T-RATING = 1-HR. OR 2-HR.

WL1462a.082610

**FRONT VIEW**

**SECTION A-A**



1. GYPSUM WALL ASSEMBLY (UL/cUL CLASSIFIED U300, U400, OR V400 SERIES) (1-HR. OR 2-HR. FIRE-RATING) (2-HR. SHOWN) TO INCLUDE THE FOLLOWING CONSTRUCTION FEATURES :
  - A. [NOT SHOWN] WOOD STUDS TO CONSIST OF NOMINAL 2" x 4" LUMBER (SPACED MAXIMUM 16" OC). STEEL STUDS TO BE MINIMUM 3-1/2" WIDE (SPACED MAXIMUM 24" OC).
  - B. NOMINAL 5/8" THICK GYPSUM WALLBOARD. TYPE, NUMBER OF LAYERS, AND SHEET ORIENTATION AS SPECIFIED IN THE INDIVIDUAL UL DESIGN.
2. STEEL STRAPS (MINIMUM 1-1/2" WIDE BY 16 GA. (OR HEAVIER)) SECURED TO STUDS WITH TWO STEEL SCREWS AT EACH END. STRAPS TO BE LOCATED ACROSS TOP AND BOTTOM OF THE OPENINGS, 4-1/2" APART.
3. MEDICAL GAS STATION OUTLET FOR USE IN RIGID PIPING SYSTEMS AT PRESSURES NOT EXCEEDING 100 PSIG. STATION OUTLET PROVIDED WITH A ROUGH-IN ASSEMBLY, LATCH VALVE ASSEMBLY, AND DIE-CAST TRIM PLATE. THE ROUGH-IN ASSEMBLY IS SCREW ATTACHED TO THE STEEL STRAPS. THE INSTALLATION WITHIN THE WALL ASSEMBLY SHALL BE IN ACCORDANCE WITH MANUFACTURER'S INSTALLATION INSTRUCTIONS (BEACON MEDICAL PRODUCTS LLC, DBA, BEACONMEDAES - SERIES B).
4. HILTI CP 617 FIRESTOP PUTTY PADS INSTALLED TO COMPLETELY COVER THE BACKSIDE OF THE STATION OUTLET, ROUGH-IN PLATE, AND EXTEND TO COVER STEEL STRAPS TO WHICH THE ROUGH-IN PLATE IS CONNECTED. PUTTY PADS TO OVERLAP EACH OTHER A MINIMUM 1/4". ADDITIONAL PUTTY PADS TO COMPLETELY COVER HORIZONTAL SECTION OF PIPE FITTING AT EXTERIOR OF BOX AND EXTEND 1" UP THE VERTICAL SECTION OF PIPING.
5. [NOT SHOWN] MINIMUM R19 GLASS-FIBER OR MINERAL WOOL INSULATION FITTED IN STUD CAVITY.



HILTI, Inc.  
Tulsa, Oklahoma USA (800) 879-8000

Sheet	1 of 1
Scale	3/32" = 1"
Date	Aug. 26, 2010

Drawing No.  
**WL  
1462a**