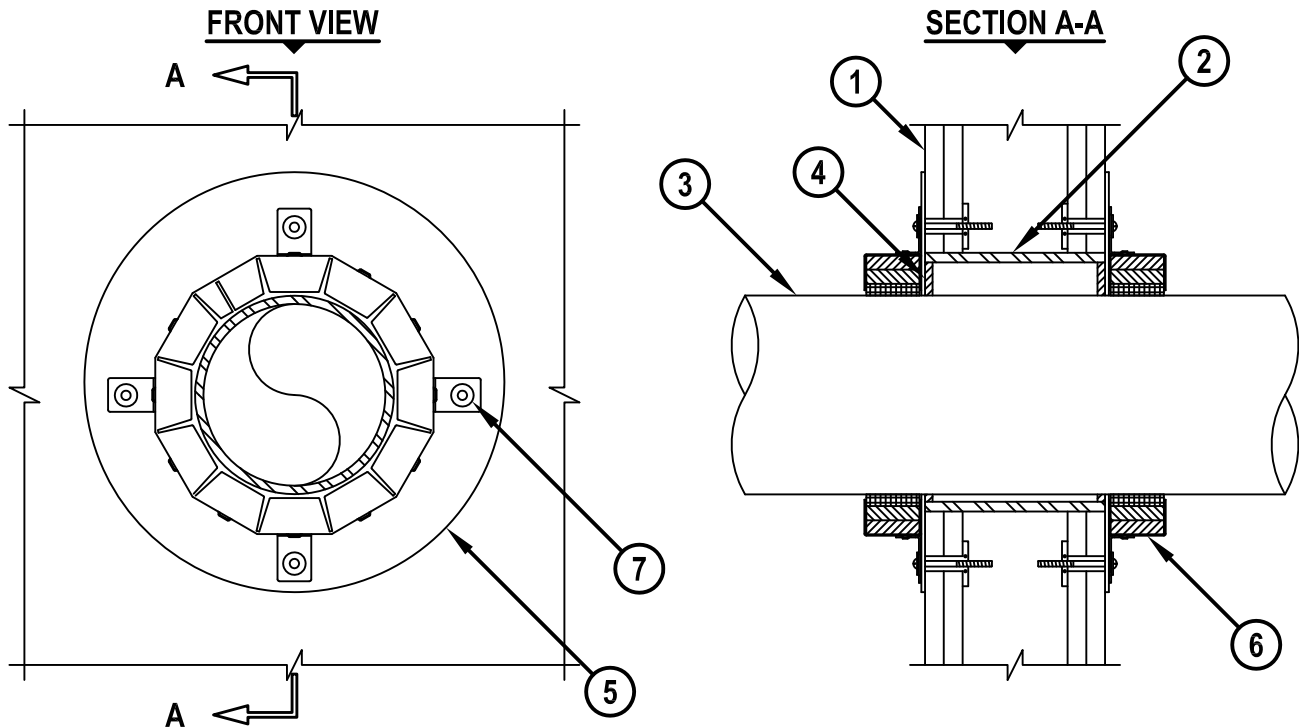


UL SYSTEM NO. W-L-2084

PLASTIC PIPE THROUGH GYPSUM WALL ASSEMBLY

F-RATING = 1-HR. OR 2-HR.
T-RATING = 0-HR. OR 1/2-HR.

WL2084f.012415



1. GYPSUM WALL ASSEMBLY (UL CLASSIFIED U300 OR U400 SERIES) (1-HR. OR 2-HR. FIRE-RATING). (2-HR. SHOWN).
2. MAXIMUM 8" NOMINAL DIAMETER STEEL PIPE SLEEVE (SCHEDULE 40 OR THINNER).
3. PENETRATING ITEM TO BE ONE OF THE FOLLOWING (ALSO SEE NOTE NO. 3 BELOW) :
 - A. MAXIMUM 6" NOMINAL DIAMETER PVC PLASTIC PIPE (CELLULAR OR SOLID CORE).
 - B. MAXIMUM 6" NOMINAL DIAMETER ABS PLASTIC PIPE (CELLULAR OR SOLID CORE).
 - C. MAXIMUM 6" NOMINAL DIAMETER FRPP PLASTIC PIPE.
 - D. MAXIMUM 6" NOMINAL DIAMETER CPVC PLASTIC PIPE.
4. [OPTIONAL] MINIMUM 1/4" DEPTH HILTI FS-ONE MAX OR FS-ONE INTUMESCENT FIRESTOP SEALANT.
5. SHEET METAL COVER PLATE (MINIMUM 18 GA.) PLACED OVER OPENING PRIOR TO ATTACHING HILTI CP 643N FIRESTOP COLLAR (ALSO SEE NOTE NO. 4 BELOW).
6. HILTI CP 643N FIRESTOP COLLAR WITH FASTENING HOOKS.
7. HILTI 3/16" TOGGLER BOLTS AND WASHERS TO ATTACH EACH FASTENING HOOK TO GYPSUM WALL ASSEMBLY. FOR PIPES 4" OR SMALLER, COLLARS MAY BE FASTENED WITH NO. 10 x 1-1/2" LONG DRYWALL OR LAMINATE SCREWS WITH 3/4" STEEL WASHERS.

NOTES : 1. MAXIMUM DIAMETER OF OPENING = 8".
2. ANNULAR SPACE = MINIMUM 1/4", MAXIMUM 1-1/4".
3. CLOSED OR VENTED PIPING SYSTEM (ABS, PVC, FRPP = SCHEDULE 40; CPVC = SDR 17).
4. INSIDE DIAMETER OF COVER PLATE SHOULD BE MAXIMUM 1/4" LARGER THAN OUTSIDE DIAMETER OF PIPE. OUTSIDE DIAMETER OF COVER PLATE SHOULD BE MINIMUM 2-1/2" LARGER THAN OUTSIDE DIAMETER OF PIPE.



HILTI, Inc.
Tulsa, Oklahoma USA (800) 879-8000

Sheet	1 of 1
Scale	5/32" = 1"
Date	Jan. 24, 2015

Drawing No.

**WL
2084f**

Saving Lives through Innovation and Education