

UL SYSTEM NO. W-L-2184

PLASTIC PIPE IN A SLEEVE THROUGH GYPSUM WALL ASSEMBLY

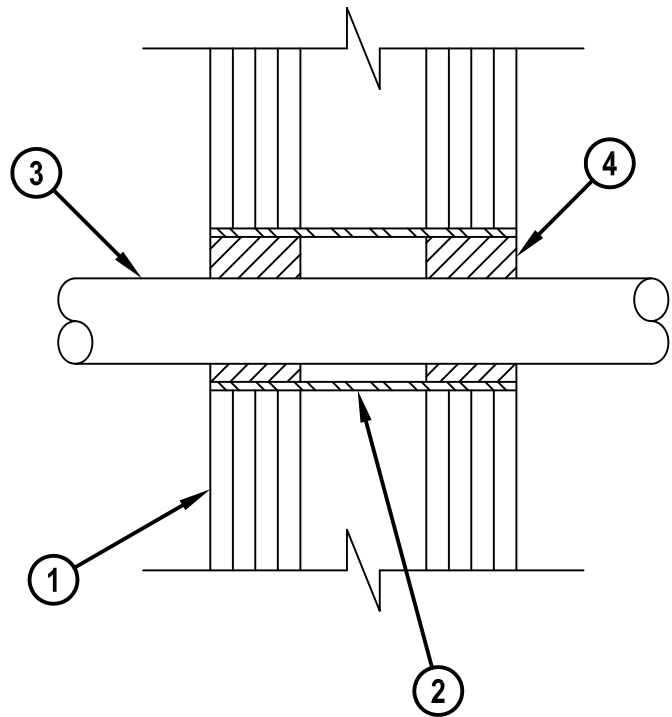
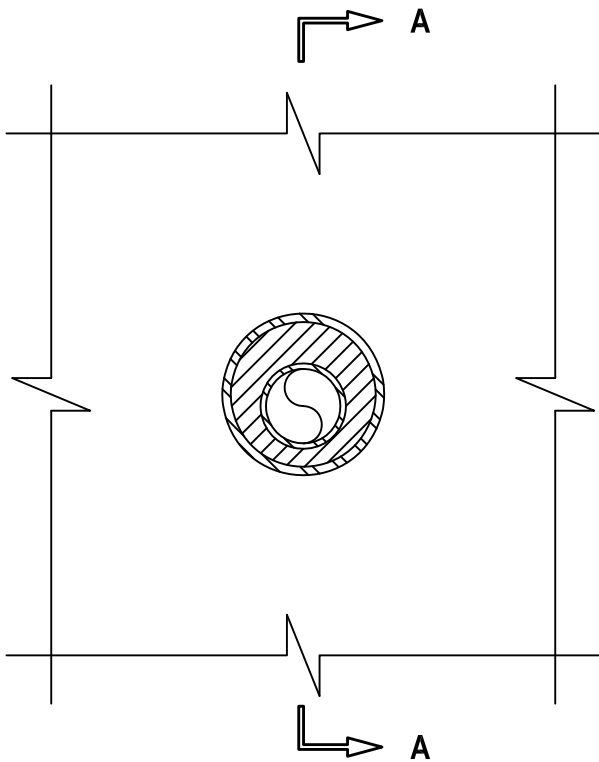
F-RATING = 4-HR.

T-RATING = 0-HR.

w/2184b.011215

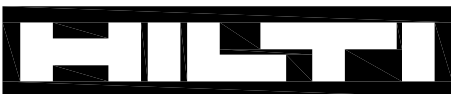
FRONT VIEW

SECTION A-A



1. GYPSUM WALL ASSEMBLY (UL CLASSIFIED U400 SERIES WALL) (4-HR. FIRE-RATING).
2. MAXIMUM 4" NOMINAL DIAMETER STEEL PIPE SLEEVE (SCHEDULE 40 OR HEAVIER).
3. PENETRATING ITEM TO BE ONE OF THE FOLLOWING :
 - A. MAXIMUM 2" NOMINAL DIAMETER PVC PLASTIC PIPE (CLOSED PIPING SYSTEM).
 - B. MAXIMUM 2" NOMINAL DIAMETER CPVC PLASTIC PIPE (CLOSED PIPING SYSTEM).
4. MINIMUM 2" DEPTH HILTI FS-ONE MAX OR FS-ONE INTUMESCENT FIRESTOP SEALANT.

NOTES : 1. MAXIMUM DIAMETER OF OPENING = 4".
2. ANNULAR SPACE = MINIMUM 1/2", MAXIMUM 1".



Hilti Firestop Systems

HILTI, Inc.
Tulsa, Oklahoma USA (800) 879-8000

Sheet 1 of 1

Scale 3/16" = 1"

Date Jan. 12, 2015

Drawing No.

**WL
2184b**

Saving Lives through Innovation and Education