

UL SYSTEM NO. W-L-2186

## PLASTIC PIPE THROUGH GYPSUM WALL ASSEMBLY

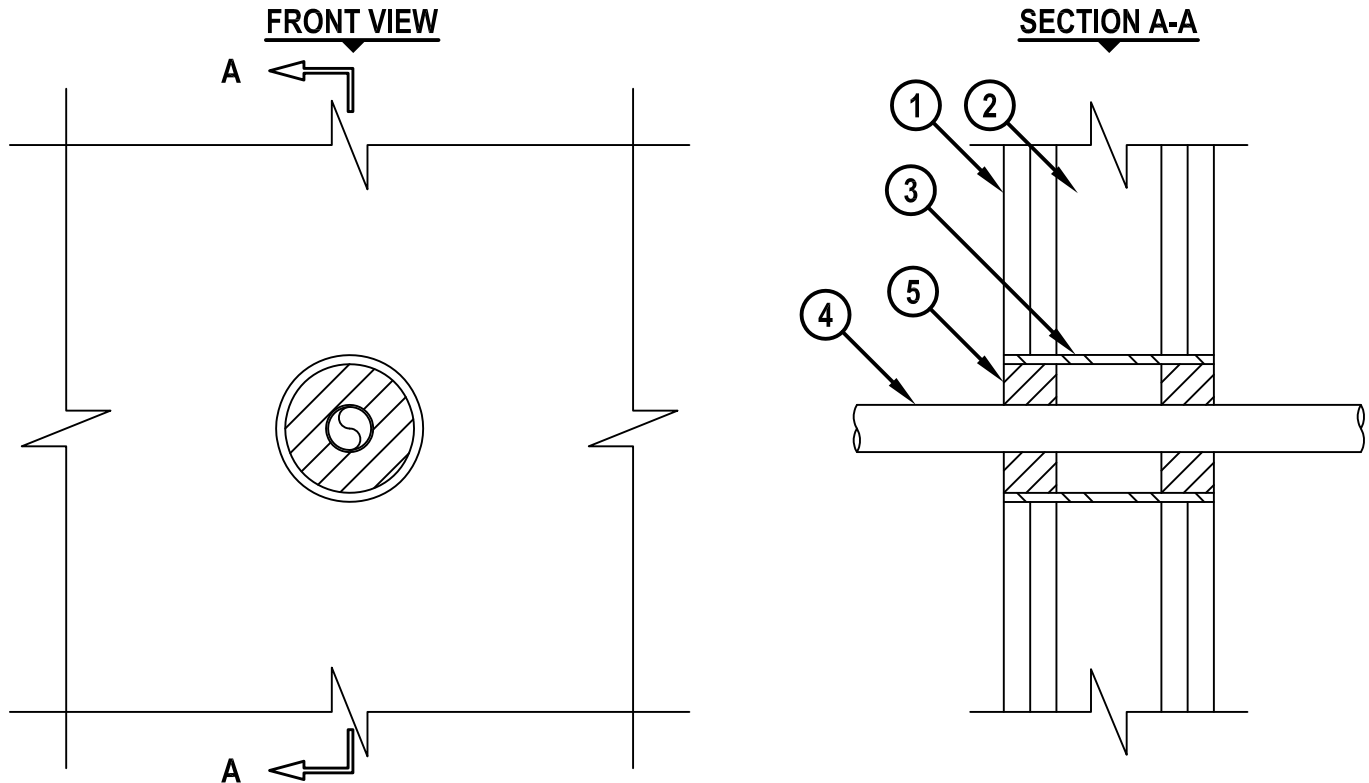
F-RATING = 1-HR. OR 2-HR.

T-RATING = 1/2-HR. OR 1-HR.

L-RATING AT AMBIENT = LESS THAN 1 CFM / SQ FT

L-RATING AT 400°F = 2 CFM / SQ FT

WL2186e.011215



1. GYPSUM WALL ASSEMBLY (UL CLASSIFIED U300, U400 OR V400 SERIES) (1-HR. OR 2-HR. FIRE-RATING) (2-HR. SHOWN).
2. [NOT SHOWN] WOOD STUDS TO CONSIST OF 2" x 4" LUMBER. STEEL STUDS TO BE MIN. 2-1/2" WIDE.
3. [OPTIONAL] MAXIMUM 3" NOMINAL DIAMETER STEEL PIPE SLEEVE (SCHEDULE 40 OR LIGHTER).
4. MAXIMUM 1" NOMINAL DIAMETER SDR 9 CROSS-LINKED POLYETHYLENE (PEX) TUBING (CLOSED PIPING SYSTEM).
5. HILTI FS-ONE MAX OR FS-ONE INTUMESCENT FIRESTOP SEALANT :
  - A. MINIMUM 5/8" DEPTH, FOR A 1-HR. FIRE-RATING.
  - B. MINIMUM 1-1/4" DEPTH, FOR A 2-HR. FIRE-RATING.

**NOTES :**

1. MAXIMUM DIAMETER OF OPENING = 3".
2. ANNULAR SPACE = MINIMUM 1/2", MAXIMUM 1-3/8".
3. WHEN A STEEL SLEEVE IS PROVIDED FOR ASSEMBLIES WITH L-RATINGS, APPLY HILTI FS-ONE MAX OR FS-ONE INTUMESCENT FIRESTOP SEALANT AROUND PERIPHERY OF OPENING TO COVER EXPOSED ENDS OF SLEEVE AND TO LAP MINIMUM 1/4" ONTO GYPSUM BOARD ON EACH SIDE OF WALL.
4. WHEN A STEEL SLEEVE IS NOT PROVIDED, PENETRANT MAY BE INSTALLED AT AN ANGLE NOT GREATER THAN 45° FROM PERPENDICULAR.



HILTI, Inc.  
Tulsa, Oklahoma USA (800) 879-8000

Sheet	1 of 1
Scale	7/32" = 1"
Date	Jan. 12, 2015

Drawing No.

**WL  
2186e**

*Saving Lives through Innovation and Education*