

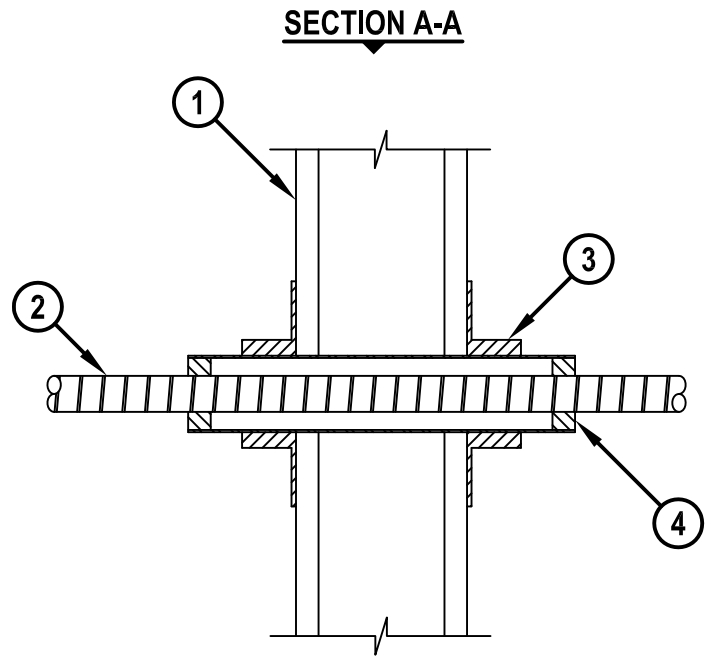
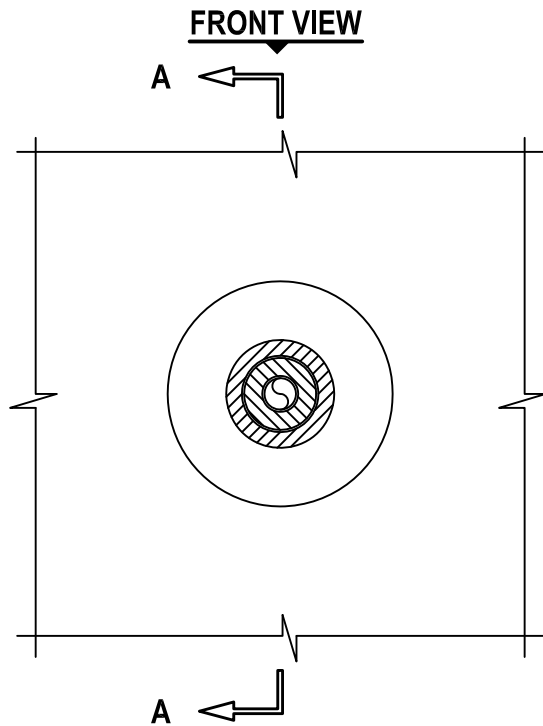
UL SYSTEM NO. W-L-2197

**PLASTIC PIPE THROUGH GYPSUM WALL ASSEMBLY.**

F-RATING = 1-HR.

T-RATING = 1/2-HR.

WL2197b.011615



1. GYPSUM WALL ASSEMBLY (UL CLASSIFIED U300 OR U400 SERIES WALL) (1-HR. FIRE-RATING).
2. MAXIMUM 1" NOMINAL DIAMETER OPTICAL FIBER RACEWAY (INNERDUCT) (CLOSED PIPING SYSTEM).
3. UNIQUE FIRESTOP PRODUCTS, DIV. OF "IT'S UNIQUE" INC. SMOOTH SLEEVE (1" AND 2" SIZES).
4. MINIMUM 5/8" DEPTH HILTI FS-ONE MAX OR FS-ONE INTUMESCENT FIRESTOP SEALANT.

NOTES : 1. MAXIMUM DIAMETER OF OPENING IN WALL FOR 1" AND 2" SIZES ARE 1-1/8" AND 2-1/4" RESPECTIVELY.  
2. ANNULAR SPACE = MINIMUM 1/4", MAXIMUM 3/8".



HILTI, Inc.  
Tulsa, Oklahoma USA (800) 879-8000

Sheet	1 of 1
Scale	3/16" = 1"
Date	Jan. 16, 2015

Drawing No.  
**WL  
2197b**

*Saving Lives through Innovation and Education*