

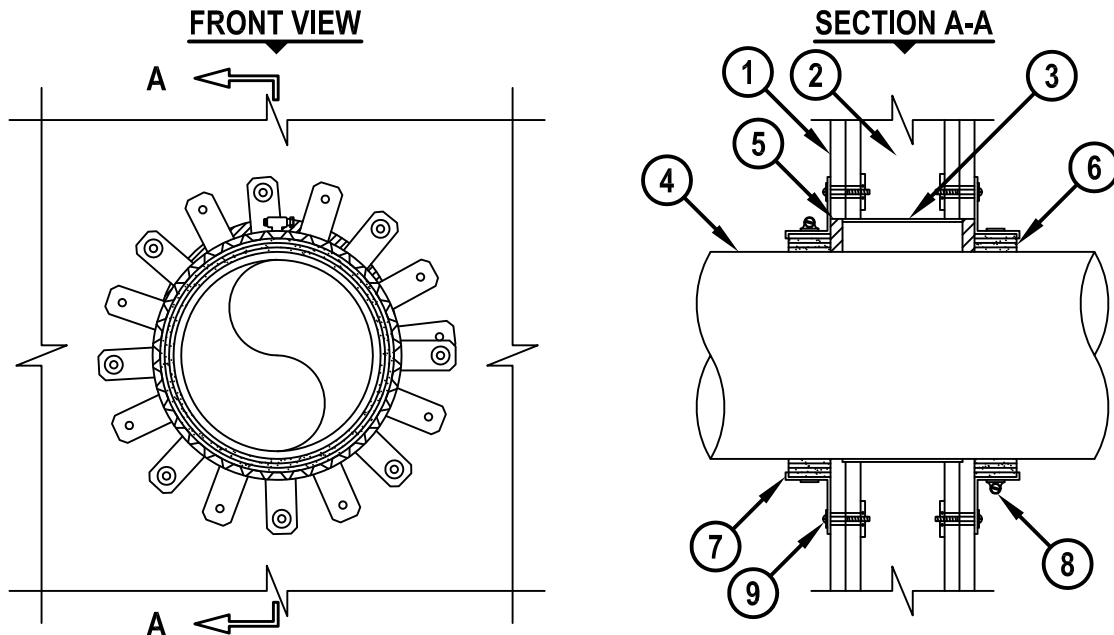
UL SYSTEM NO. W-L-2236

## PLASTIC PIPE THROUGH GYPSUM WALL ASSEMBLY

F-RATING = 1-HR. OR 2-HR.

T-RATING = 1-HR. OR 1-1/4-HR.

WL2236e.011215



1. GYPSUM WALL ASSEMBLY (UL CLASSIFIED U300 OR U400 SERIES) (1-HR. OR 2-HR. FIRE-RATING) (2-HR. SHOWN).
2. [NOT SHOWN] WOOD STUDS TO CONSIST OF NOMINAL 2" x 4" LUMBER. STEEL STUDS TO BE MINIMUM 3-1/2" WIDE.
3. [OPTIONAL] NO. 8 STEEL WIRE MESH SLEEVE (SEE NOTE NO. 4 BELOW).
4. PENETRATING ITEM TO BE ONE OF THE FOLLOWING (SEE NOTE NO. 3 BELOW) :
  - A. MAXIMUM 8" NOMINAL DIAMETER PVC PLASTIC PIPE (CELLULAR OR SOLID CORE).
  - B. MAXIMUM 8" NOMINAL DIAMETER CPVC PLASTIC PIPE (CLOSED PIPING SYSTEM ONLY).
5. MINIMUM 1/2" DEPTH HILTI FS-ONE MAX OR FS-ONE INTUMESCENT FIRESTOP SEALANT.
6. HILTI CP 648E WRAP STRIP (NOMINAL 3/16" THICK x 1-3/4" WIDE) INDIVIDUALLY WRAPPED AROUND THE OUTER CIRCUMFERENCE OF THE PIPE, COVERING FOUR TIMES, WITH ENDS BUTTED AND HELD IN PLACE WITH TAPE. BUTTED ENDS IN SUCCESSIVE LAYER SHALL BE OFFSET. WRAP STRIP TO BE BUTTED TIGHTLY AGAINST SURFACE OF THE WALL.
7. HILTI RETAINING COLLAR WRAPPED OVER THE WRAP STRIPS, OVERLAPPING MINIMUM 1".
8. NOMINAL 1/2" WIDE STAINLESS STEEL HOSE CLAMP(S) FASTENED AT MID-HEIGHT OF HILTI RETAINING COLLAR.
9. EVERY OTHER TAB OF RETAINING COLLAR SECURED TO GYPSUM WALL WITH 1/8" DIAMETER x 2-1/4" LONG, STEEL HOLLOW WALL ANCHORS WITH 1/2" DIAMETER WASHERS.

NOTES : 1. MAXIMUM DIAMETER OF OPENING = 10".  
2. ANNULAR SPACE = MINIMUM 0", MAXIMUM 1-3/8".  
3. CLOSED OR VENTED PIPING SYSTEM (PVC = SCHEDULE 40; CPVC = SDR 13.5).  
4. STEEL WIRE MESH SLEEVE MUST HAVE A MINIMUM 2" LAP ALONG THE LONGITUDINAL SEAM. LENGTH OF STEEL MESH SLEEVE TO BE 1/2" LESS THAN THICKNESS OF WALL.



HILTI, Inc.  
Tulsa, Oklahoma USA (800) 879-8000

Sheet	1 of 1
Scale	1/8" = 1"
Date	Jan. 12, 2015

Drawing No.

**WL  
2236e**

*Saving Lives through Innovation and Education*