

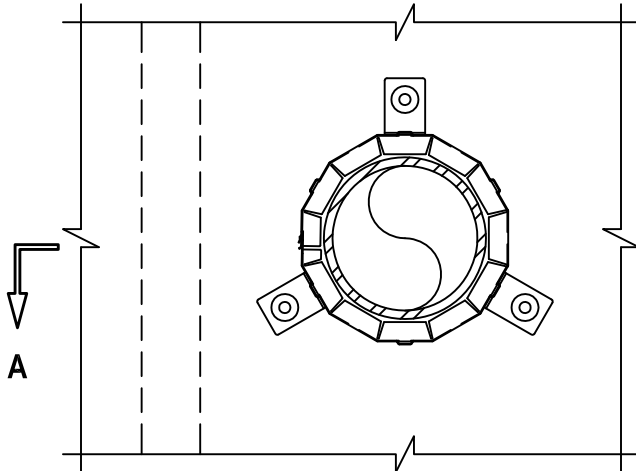
PLASTIC PIPE THROUGH GYPSUM SHAFT WALL ASSEMBLY

F-RATING = 2-HR.

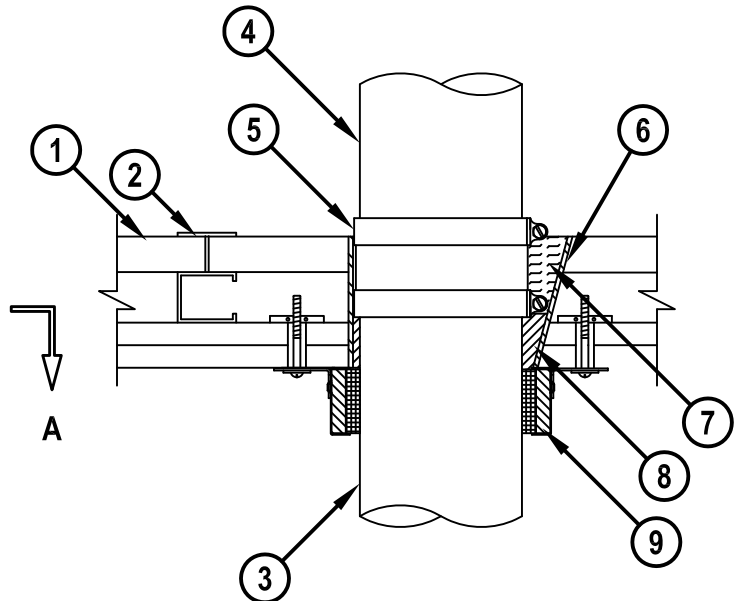
T-RATING = 1-HR.

WL2292d.011215

FRONT VIEW



SECTION A-A



1. GYPSUM SHAFT WALL ASSEMBLY (UL/cUL CLASSIFIED U400 SERIES) (2-HR. FIRE-RATING).
2. "C-T" SHAPED STEEL STUDS (1-5/8" WIDE x 2-1/2" DEEP, MIN. 25 GA.) SPACED MAXIMUM 24" C/C.
3. MAXIMUM 4" NOMINAL DIAMETER SCHEDULE 40 PVC PLASTIC PIPE (SOLID OR CELLULAR CORE).
4. MAXIMUM 4" NOMINAL DIAMETER CAST IRON PIPE.
5. MAXIMUM 4" NOMINAL DIAMETER (MINIMUM 32 GA.) CORRUGATED STAINLESS STEEL SHIELDED RUBBER NO-HUB CONNECTOR.
6. MAXIMUM 6" TO 5" DIAMETER CONICAL SHEET METAL SLEEVE (MINIMUM 28 GA.) OR NO. 8 STEEL WIRE MESH HAVING MINIMUM 1" OVERLAP ALONG LONGITUDINAL SEAM.
7. MINIMUM 2-1/4" THICKNESS MINERAL WOOL (MINIMUM 4 PCF DENSITY) TIGHTLY PACKED AND RECESSED ON ONE SIDE OF WALL FOR FIRESTOP SEALANT.
8. MINIMUM 1-1/2" DEPTH HILTI FS-ONE MAX OR FS-ONE INTUMESCENT FIRESTOP SEALANT.
9. HILTI CP 643N FIRESTOP COLLAR WITH FASTENING HOOKS.
10. HILTI 3/16" TOGGLER BOLTS AND 3/4" DIAMETER WASHERS TO ATTACH EACH FASTENING HOOK TO WALL ASSEMBLY.

NOTES : 1. MAXIMUM DIAMETER OF OPENING IN GYPSUM LINER = 6".
 2. MAXIMUM DIAMETER OF OPENING IN GYPSUM WALLBOARD = 5".
 3. ANNULAR SPACE AROUND PVC PLASTIC PIPE = MINIMUM 0", MAXIMUM 1/2".
 4. ANNULAR SPACE AROUND CAST IRON PIPE = MINIMUM 0", MAXIMUM 1-1/2".



HILTI, Inc.
 Tulsa, Oklahoma USA (800) 879-8000

Sheet	1 of 1
Scale	3/32" = 1"
Date	Jan. 12, 2015

Drawing No.

**WL
2292d**