

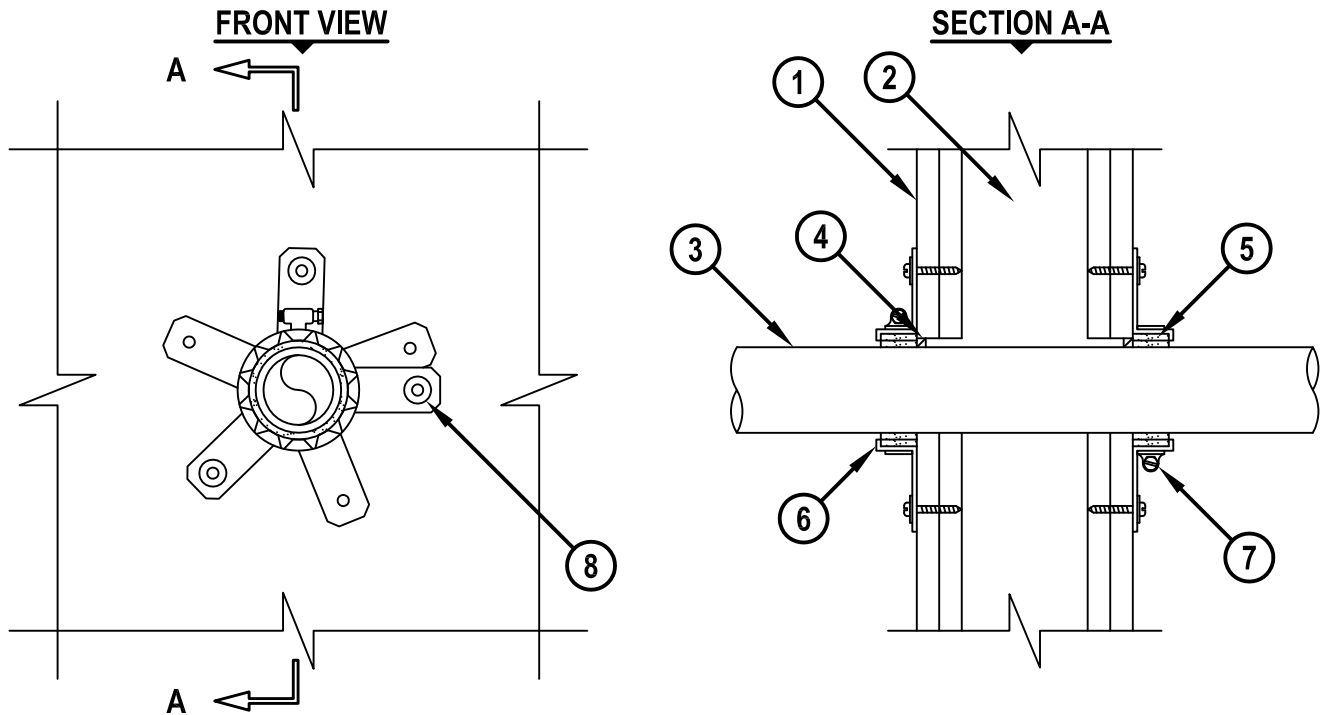
UL SYSTEM NO. W-L-2453

PLASTIC PIPE THROUGH GYPSUM WALL ASSEMBLY

F-RATING = 1-HR. OR 2-HR.

T-RATING = 0-HR. OR 1-3/4-HR.

WL2453b.011215



1. GYPSUM WALL ASSEMBLY (UL/cUL CLASSIFIED U300, U400 OR V400 SERIES) (1-HR. OR 2-HR. FIRE-RATING) (2-HR. SHOWN).
2. [NOT SHOWN] WOOD STUDS TO CONSIST OF NOMINAL 2" x 4" LUMBER. STEEL STUDS TO BE MINIMUM 3-1/2" WIDE.
3. PENETRATING ITEM TO BE ONE OF THE FOLLOWING :
 - A. MAXIMUM 2" NOMINAL DIAMETER PVC PLASTIC PIPE (CELLULAR OR SOLID CORE).
 - B. MAXIMUM 2" NOMINAL DIAMETER PP PLASTIC PIPE(CELLULAR OR SOLID CORE).
4. MINIMUM 1/4" DEPTH HILTI FS-ONE MAX OR FS-ONE INTUMESCENT FIRESTOP SEALANT.
5. HILTI CP 648E WRAP STRIP (NOMINAL 3/16" THICK x 1" WIDE) CONTINUOUSLY WRAPPED AROUND THE OUTER CIRCUMFERENCE OF THE PIPE, TWO TIMES, AND HELD IN PLACE WITH ALUMINUM TAPE.
6. HILTI RETAINING COLLAR WRAPPED OVER WRAP STRIPS, OVERLAPPING MINIMUM 1".
7. NOMINAL 1/2" WIDE STAINLESS STEEL HOSE CLAMP FASTENED AT MID-HEIGHT OF RETAINING COLLAR.
8. EVERY OTHER TAB OF RETAINING COLLAR SECURED TO GYPSUM WALL WITH 1-1/4" LONG STEEL LAMINATE DRYWALL SCREWS IN CONJUNCTION WITH 3/4" DIAMETER FENDER WASHERS.

NOTES : 1. MAXIMUM DIAMETER OF OPENING = 2-5/8".
2. ANNULAR SPACE = MINIMUM 0", MAXIMUM 1/4".
3. CLOSED OR VENTED PIPING SYSTEM (PVC AND PP = SCHEDULE 80).



HILTI, Inc.
Tulsa, Oklahoma USA (800) 879-8000

Sheet	1 of 1
Scale	3/16" = 1"
Date	Jan. 12, 2015

Drawing No.

**WL
2453b**

Saving Lives through Innovation and Education