

UL SYSTEM NO. W-L-2471

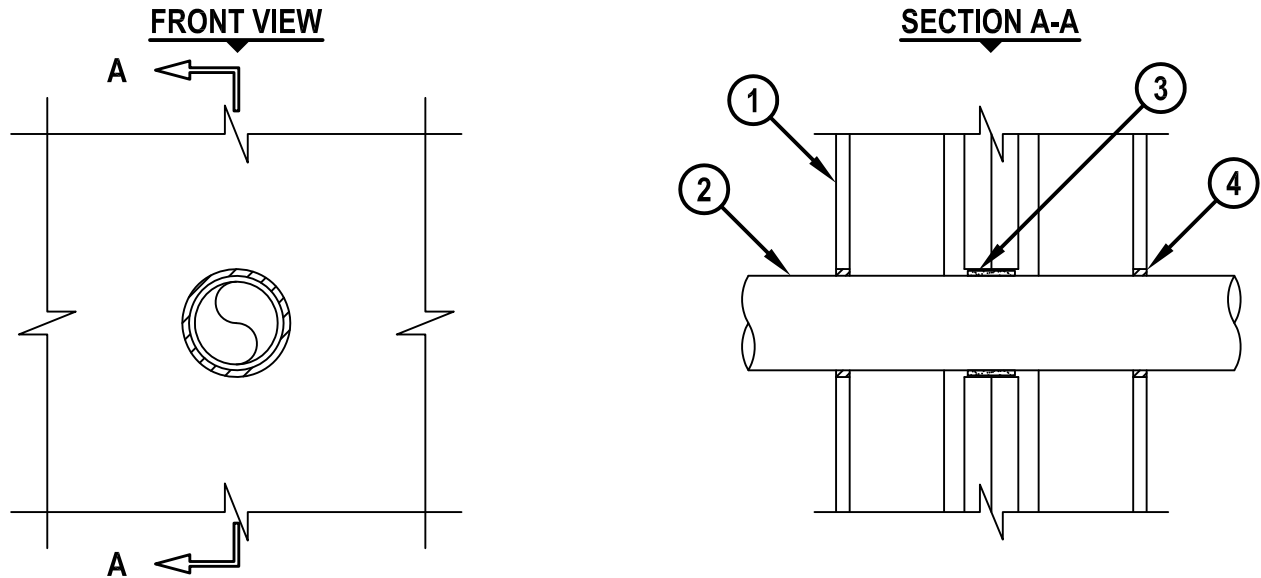
PLASTIC PIPE THOROUGH GYPSUM WALL ASSEMBLY

F-RATING = 2-HR.

T-RATING = 0-HR.

L-RATING AT AMBIENT = LESS THAN 1.2 CFM / SQ FT

L-RATING AT 400°F = LESS THAN 1 CFM / SQ FT



WL2471c.011215

1. GYPSUM WALL ASSEMBLY (UL CLASSIFIED U300 SERIES) (2-HR. FIRE-RATING) CONSISTING OF THE FOLLOWING :

- A. NOMINAL 2 x 4 STUDS SPACED MAXIMUM 24" OC.
- B. STEEL "H" SHAPED STUDS SPACED MAXIMUM 24" OC.
- C. TWO LAYERS 1" GYPSUM WALLBOARD LINER PANELS.
- D. MINIMUM 1/2" THICK GYPSUM WALLBOARD.

2. PENETRATING ITEM TO BE ONE OF THE FOLLOWING :

- A. MAXIMUM 3" NOMINAL DIAMETER PVC PLASTIC PIPE (CELLULAR OR SOLID CORE).
- B. MAXIMUM 3" NOMINAL DIAMETER ABS PLASTIC PIPE (CELLULAR OR SOLID CORE).
- C. MAXIMUM 3" NOMINAL DIAMETER CPVC PLASTIC PIPE (CLOSED PIPING SYSTEM ONLY).
- D. MAXIMUM 3" NOMINAL DIAMETER RNC-PVC CONDUIT.

3. HILTI CP 648S WRAP STRIP WRAPPED CONTINUOUSLY AROUND CIRCUMFERENCE OF PIPE AND SECURED IN PLACE WITH INTEGRATED FASTENING TAPE. WRAP STRIP SLID INTO ANNULAR SPACE SUCH THAT IT IS CENTERED WITHIN THE GYPSUM WALLBOARD LINER.

4. MINIMUM 1/2" DEPTH HILTI FS-ONE MAX OR FS-ONE INTUMESCENT FIRESTOP SEALANT APPLIED FLUSH WITH OUTER SURFACES OF GYPSUM WALLBOARD.

NOTES : 1. MAXIMUM DIAMETER OF OPENING = 4".
2. ANNULAR SPACE = MINIMUM 3/16", MAXIMUM 5/16".
3. CLOSED OR VENTED PIPING SYSTEM (PVC, ABS, RNC = SCHEDULE 40; CPVC = SDR 13.5).



Hilti Firestop Systems

HILTI, Inc.
Tulsa, Oklahoma USA (800) 879-8000

Sheet	1 of 1
Scale	9/64" = 1"
Date	Jan. 12, 2015

Drawing No.

**WL
2471c**

Saving Lives through Innovation and Education