

UL SYSTEM NO. W-L-2473

**PLASTIC PIPE THROUGH GYPSUM WALL ASSEMBLY**

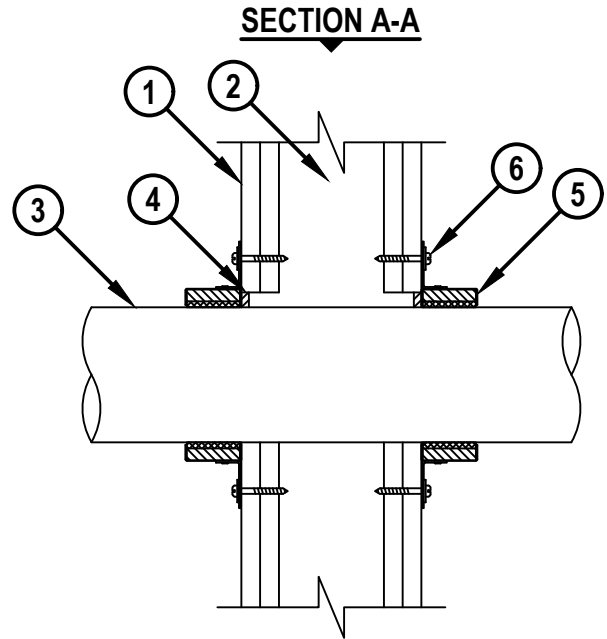
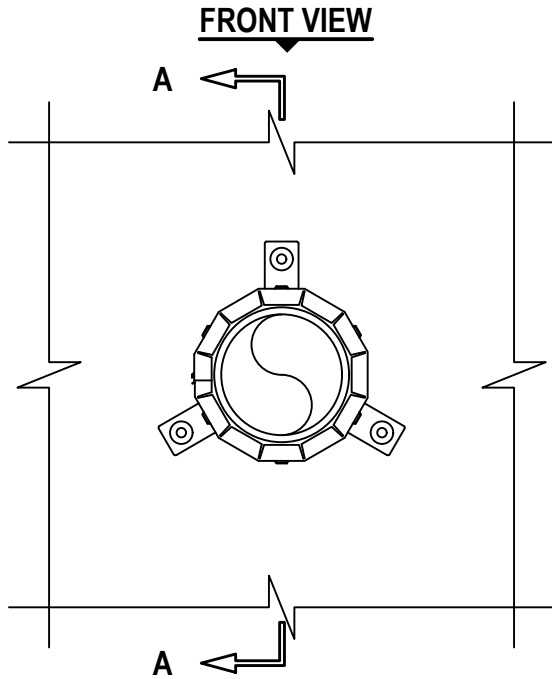
F-RATING = 1-HR. OR 2-HR.

T-RATING = 0-HR. OR 1-HR.

L-RATING AT AMBIENT = 3 CFM / SQ FT

L-RATING AT 400°F = LESS THAN 1 CFM / SQ FT

WL2473e.111816



1. GYPSUM WALL ASSEMBLY (UL CLASSIFIED U300, U400, OR V400 SERIES) (1-HR. OR 2-HR. FIRE-RATING) (2-HR. SHOWN).
2. [NOT SHOWN] WOOD STUDS TO CONSIST OF NOMINAL 2" x 4" LUMBER. STEEL STUDS TO BE MINIMUM 2-1/2" WIDE.
3. MAXIMUM 4" NOMINAL DIAMETER POLYPROPYLENE (PP) PLASTIC PIPE (SCHEDULE 40) (CLOSED OR VENTED PIPING SYSTEM).
4. MINIMUM 1/4" DEPTH HILTI FS-ONE MAX INTUMESCENT FIRESTOP SEALANT.
5. HILTI CP 643N FIRESTOP COLLAR WITH FASTENING HOOKS.
6. ATTACH EACH FASTENING HOOK TO WALL ASSEMBLY WITH HILTI 3/16" TOGGLER BOLTS AND WASHERS OR WITH NO. 10 x 1-1/2" LONG DRYWALL OR LAMINATE SCREWS WITH MINIMUM 3/4" STEEL WASHERS.

NOMINAL PIPE DIAMETER	PRODUCT DESCRIPTION	NO. OF FASTENING HOOKS
1-1/2"	CP 643 50/1.5" N	2
2"	CP 643 63/2" N	2
3"	CP 643 90/3" N	3
4"	CP 643 110/4" N	3

**NOTES : 1. MAXIMUM DIAMETER OF OPENING = 5".  
2. ANNULAR SPACE = MINIMUM 0", MAXIMUM 1/2".**



HILTI, Inc.  
Plano, Texas USA (800) 879-8000

Sheet	1 of 1
Scale	5/32" = 1"
Date	Nov. 18, 2016

Drawing No.  
**WL  
2473e**

*Saving Lives through Innovation and Education*