

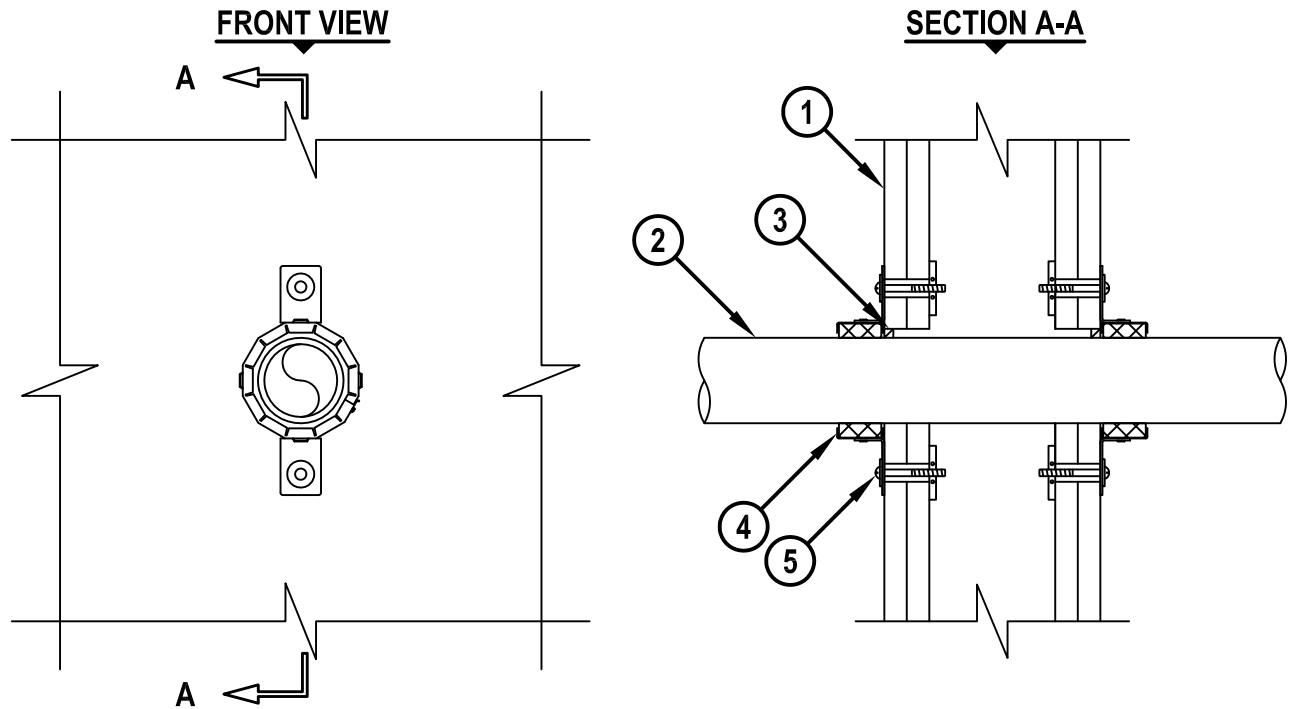
UL SYSTEM NO. W-L-2509

PLASTIC PIPE THROUGH GYPSUM WALL ASSEMBLY

F-RATING = 1-HR. OR 2-HR.

T-RATING = 0-HR., 1/2-HR., OR 1-HR.

WL2509c.040615



1. GYPSUM WALL ASSEMBLY (UL/cUL CLASSIFIED U300, U400, V400, OR W400 SERIES) (1-HR. OR 2-HR. FIRE-RATING) (2-HR. SHOWN) TO INCLUDE THE FOLLOWING CONSTRUCTION FEATURES :
 - A. [NOT SHOWN] WOOD STUDS TO CONSIST OF NOMINAL 2" x 4" LUMBER (SPACED MAXIMUM 16" OC). STEEL STUDS TO BE MINIMUM 3-1/2" WIDE (SPACED MAXIMUM 24" OC).
 - B. NOMINAL 5/8" THICK GYPSUM WALLBOARD. TYPE, NUMBER OF LAYERS, AND SHEET ORIENTATION AS SPECIFIED IN THE INDIVIDUAL UL DESIGN.
2. PENETRATING ITEM TO BE ONE OF THE FOLLOWING (CLOSED OR VENTED PIPING SYSTEMS) :
 - A. MAXIMUM 2" NOMINAL DIAMETER POLYPROPYLENE (PP) SDR 11 PLASTIC PIPE.
 - B. MAXIMUM 50mm FUSIOTHERM® (SDR 11) PP PLASTIC PIPE (MFG. BY AQUATHERM, INC.).
 - C. MAXIMUM 2" NOMINAL DIAMETER POLYSTAR CT-WHITE (SDR 11, 9, OR 7.4) (MFG. BY ORION) (CLOSED PIPING SYSTEM).
3. MINIMUM 1/4" DEPTH HILTI FS-ONE MAX OR FS-ONE INTUMESCENT FIRESTOP SEALANT FLUSH WITH BOTH SURFACES OF WALL.
4. HILTI CP 643N FIRESTOP COLLAR WITH FASTENING HOOKS.
5. SECURE EACH FASTENING HOOK TO WALL ASSEMBLY WITH HILTI 3/16" DIAMETER TOGGLER BOLTS AND WASHERS.

NOTES : 1. MAXIMUM DIAMETER OF OPENING = 3".
2. ANNULAR SPACE = MINIMUM 0", MAXIMUM 5/8".



HILTI, Inc.
Tulsa, Oklahoma USA (800) 879-8000

Sheet	1 of 1
Scale	3/16" = 1"
Date	Apr. 06, 2015

Drawing No.

WL
2509c

Saving Lives through Innovation and Education